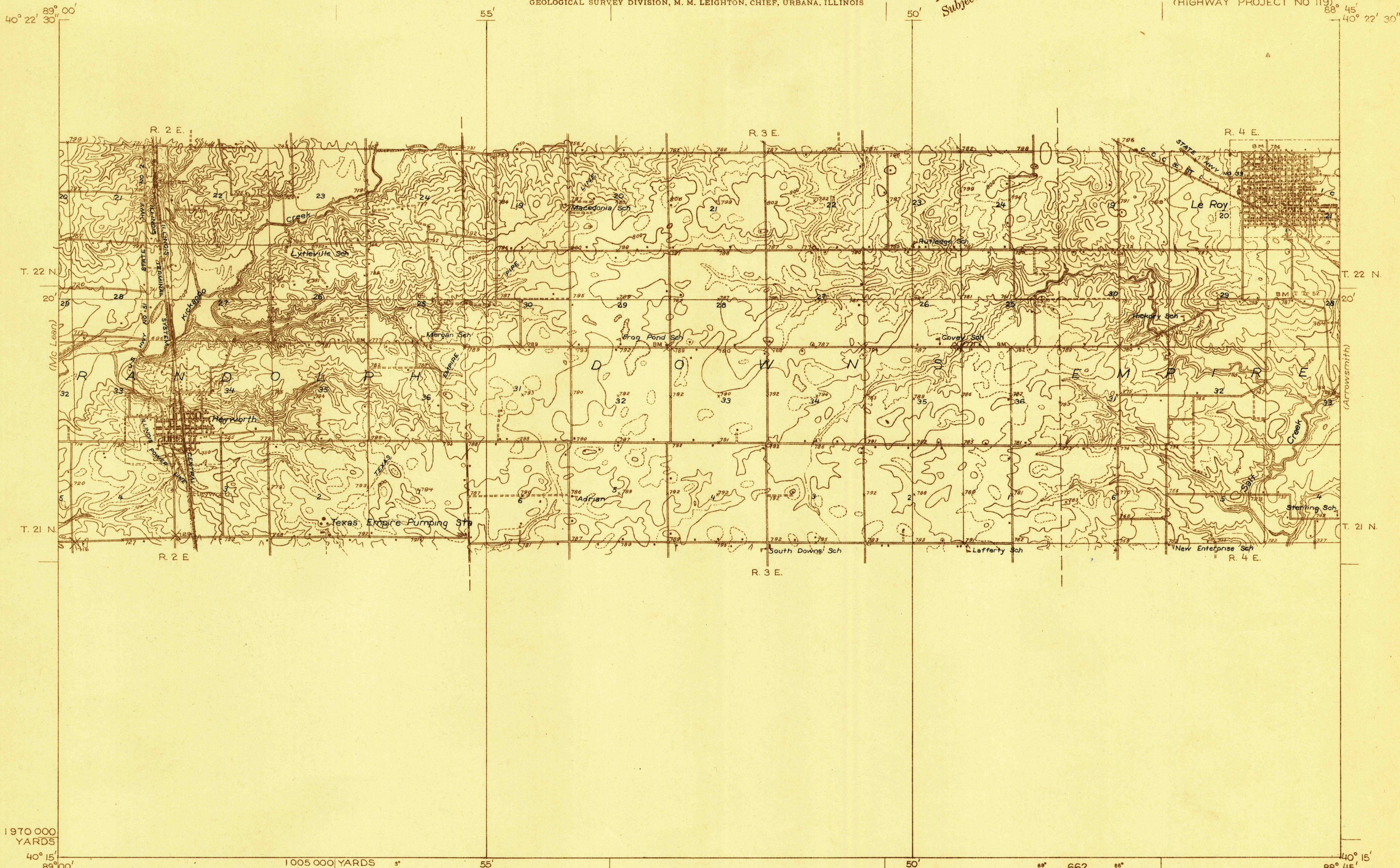


DEPARTMENT OF THE INTERIOR
U. S. GEOLOGICAL SURVEY

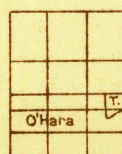
663-S-1-W/2
STATE OF ILLINOIS
DEPARTMENT OF REGISTRATION AND EDUCATION
M. F. WALSH, DIRECTOR
GEOLOGICAL SURVEY DIVISION, M. M. LEIGHTON, CHIEF, URBANA, ILLINOIS

ILLINOIS
(MC LEAN COUNTY)
LE ROY QUADRANGLE
(HIGHWAY PROJECT NO. 119)

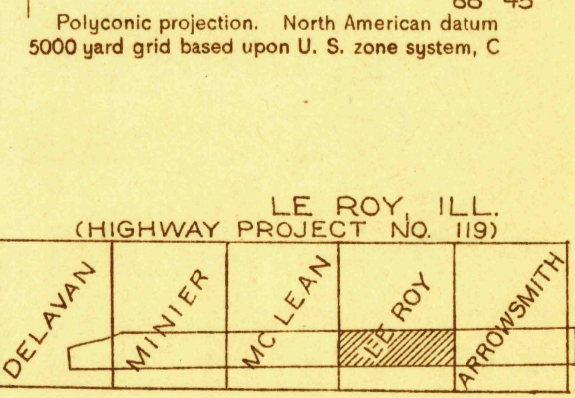
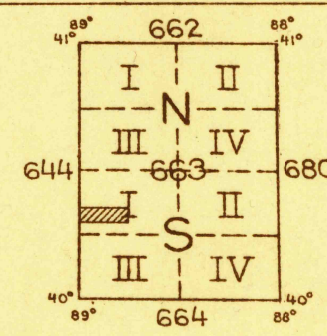
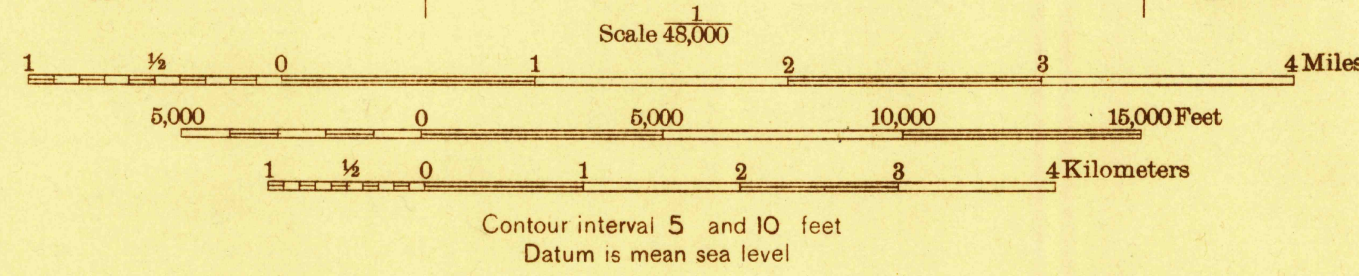
Advance sheet
Subject to correction



1970 000
YARDS
40° 15' 89° 00'
Glenn S. Smith, Division Engineer
Topography by S.B. O'Hara and W.A. Tingey
Control by U. S. Geological Survey and
U. S. Coast and Geodetic Survey
Surveyed in 1930



TRUE NORTH
MAGNETIC NORTH
APPROXIMATE MEAN
DECLINATION, 1930



USGS
Historical File
Topographic Division