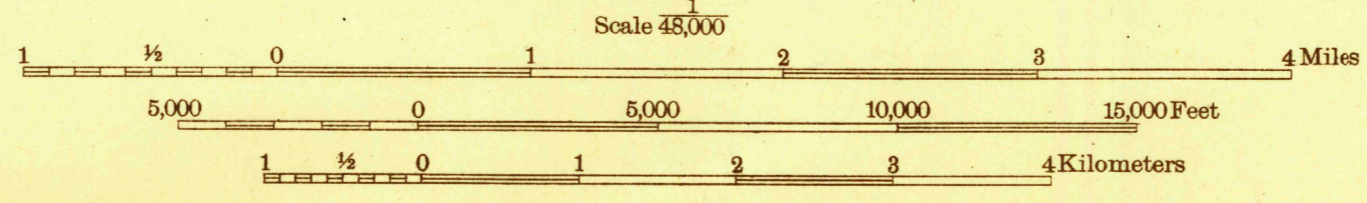


2,155,000
YARDS



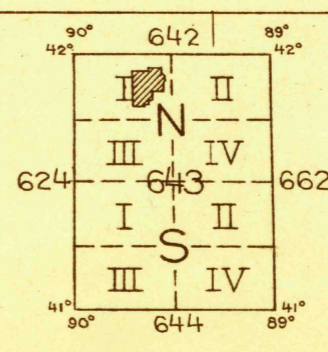
Glenn S. Smith, Division Engineer
Topography by F.L. Whaley
Control by U. S. Geological Survey
Surveyed in 1930

TRUE NORTH
MAGNETIC NORTH
APPROXIMATE MEAN
DECLINATION, 1930



Contour interval 20 feet
10 foot contours added in dashed lines
Datum is mean sea level

USGS
Historical File
Topographic Division



Polyconic projection. North American datum.
5000 yard grid based upon U. S. zone system, C

STERLING, ILL.
WOOSUNG, ILL.
(HIGHWAY PROJECT NO 87)