

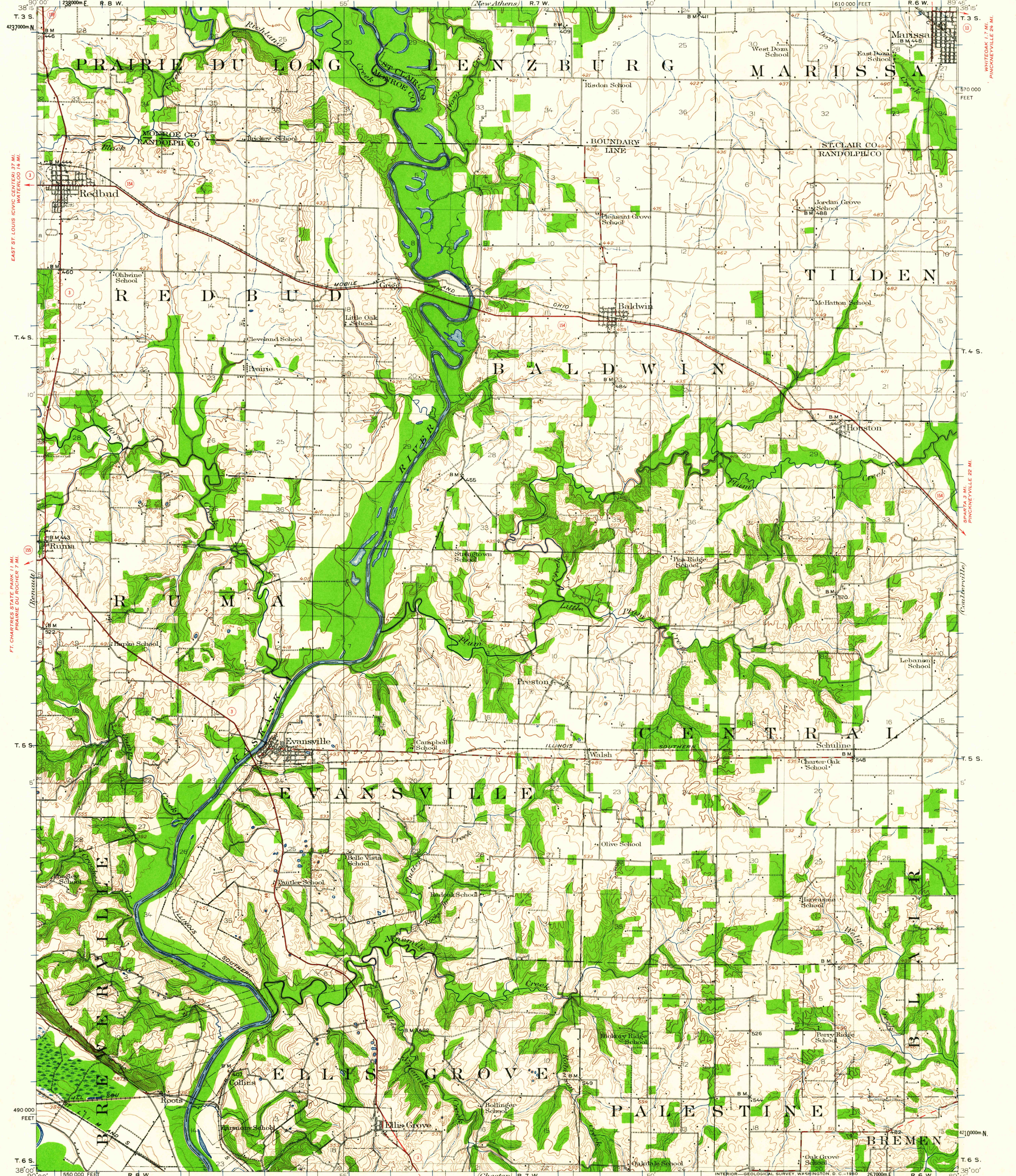
BELLEVILLE 18 MI.  
HECKER 3.9 MI.

FREEBURG 16 MI. U.S. 480 16 MI.  
LENZBURG 4.5 MI.

UNITED STATES  
DEPARTMENT OF THE INTERIOR  
GEOLOGICAL SURVEY

STATE OF ILLINOIS  
DEPARTMENT OF REGISTRATION AND EDUCATION  
GEOLOGICAL SURVEY DIVISION

ILLINOIS  
BALDWIN QUADRANGLE  
810 000 FEET  
R. 6 W. T. 3 S.



EAST ST. LOUIS (CIVIC CENTER) 37 MI.  
WATERLOO 14 MI.

FT. CHARLES STATE PARK 11 MI.  
PRAIRIE DU ROCHER 7 MI.

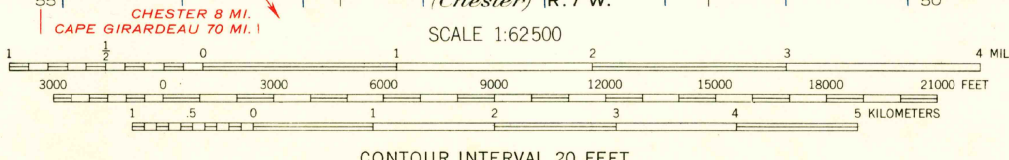
MANASSA  
B.M. 428

SPARTA 3 MI.  
PINCKEYVILLE 24 MI.

490 000 FEET

T. 6 S. 38° 00'

R.E. Marshall, Chief Geographer.  
W.H. Herron, Geographer in charge.  
Topography by Frank W. Hughes, E.W. McCrary, and S.R. Truesdell.  
Control by Mississippi River Commission,  
J.R. Ellis, W.A. Gelbach, and P.E. Fletcher.  
Surveyed in 1912.  
Culture revised in part 1942.



USGS  
Historical File  
Topographic Division

Polyconic projection. 1927 North American datum  
10,000-foot grid based on Illinois (West)  
rectangular coordinate system  
1000-meter Universal Transverse Mercator grid ticks,  
zone 16, shown in blue

ROAD CLASSIFICATION  
Heavy-duty ——— Light-duty ———  
Medium-duty ——— Unimproved dirt - - - - -  
State Route ○

TRUE NORTH  
MAGNETIC NORTH  
APPROXIMATE MEAN  
DECLINATION, 1912

CONTOUR INTERVAL 20 FEET  
DATUM IS MEAN SEA LEVEL

FOR SALE BY U.S. GEOLOGICAL SURVEY, WASHINGTON 25, D. C.  
AND BY THE STATE GEOLOGICAL SURVEY, URBANA, ILLINOIS  
A FOLDER DESCRIBING TOPOGRAPHIC MAPS AND SYMBOLS IS AVAILABLE ON REQUEST

USGS  
FILE COPY  
TOPOGRAPHIC DIVISION

BALDWIN, ILL.  
N 3800—W 8945/15  
1942

OCT - 6 1960  
990