

QUINCY (CIVIC CENTER) 16 MI.
MARBLEHEAD 9.4 MI.

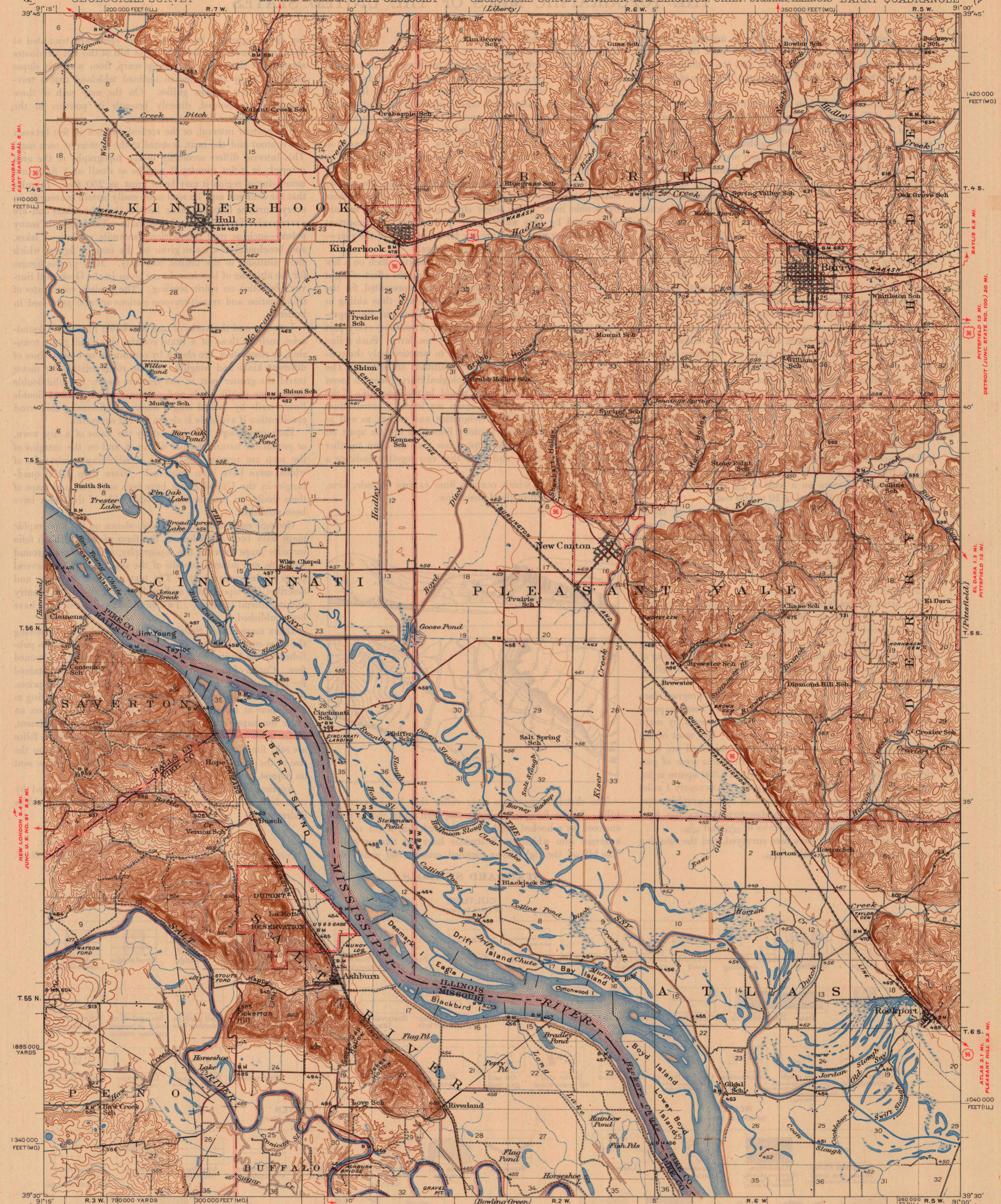
QUINCY (CIVIC CENTER) 21 MI.
PLAINVILLE 2.5 MI.

STATE OF ILLINOIS
DWIGHT H. GREEN, GOVERNOR
DEPARTMENT OF REGISTRATION AND EDUCATION
FRANK G. THOMPSON, DIRECTOR

LIBERTY 12 MI.
KINGSTON 9.7 MI.

ILLINOIS-MISSOURI
BARRY QUADRANGLE

(Mount Sterling)



HANNIBAL 7 MI.
EAST HANNIBAL 6 MI.

NEW LONDON 9.4 MI.
JUNC. U.S. NO. 61 8.8 MI.

1420 000
FEET (MO.)

T. 4 S.

WABASH

WABASH

WABASH

WABASH

WABASH

WABASH

T. 5 S.

WABASH

WABASH

WABASH

WABASH

WABASH

T. 6 S.

1040 000
FEET (ILL.)

39° 30'

(Jebel)

Topography by H.E. Simmons, R.F. Wilcoxon, B.H. Yeakum,
A.T. Munson, W.A. Tingey, and S.B. O'Hara
Surveyed in 1921-1922, 1926, and 1935-1936

Scale 62500
1 2 3 4 Miles
1000 500 0 1000 2000 3000 4000 5000 6000 7000 Yards
1000 0 3000 6000 9000 12000 15000 18000 Feet
1 2 3 4 Kilometers

Polyconic projection, North American datum
5000 yard grid based upon U.S. zone system, C
10000 foot grids based on Missouri (East)
and Illinois (West) rectangular coordinate
systems

ROUTES USUALLY TRAVELED
HARD IMPERVIOUS SURFACES
OTHER SURFACE IMPROVEMENTS
U. S. ROUTE 1944 STATE ROUTE

BARRY, ILL. MO.
Edition of 1944

N9330-W9100/15

MAP AND AIR PHOTO LIBRARY
University of Wisconsin