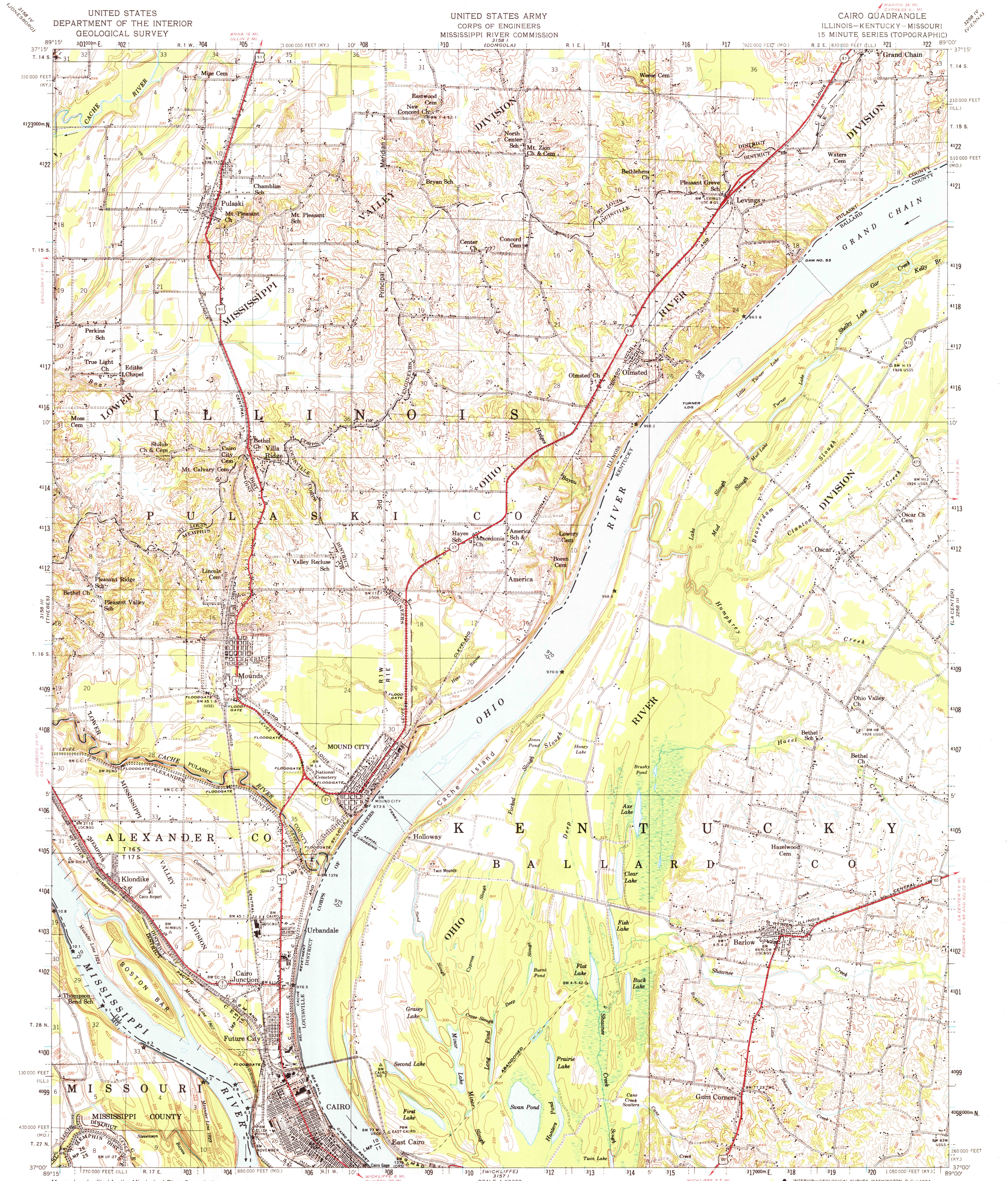


UNITED STATES
DEPARTMENT OF THE INTERIOR
GEOLOGICAL SURVEY

UNITED STATES ARMY
CORPS OF ENGINEERS
MISSISSIPPI RIVER COMMISSION

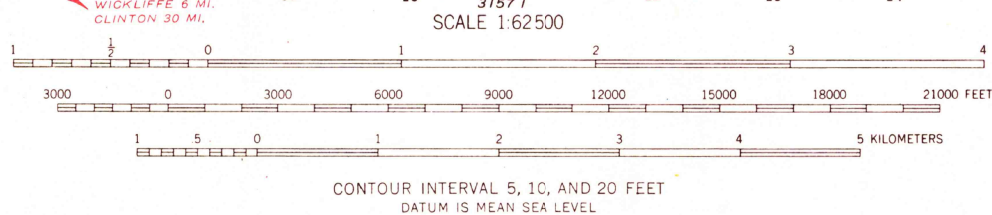
CAIRO QUADRANGLE
ILLINOIS-KENTUCKY-MISSOURI
15 MINUTE SERIES (TOPOGRAPHIC)



Mapped and edited by the Mississippi River Commission
Published by the Geological Survey
Control by USGS, USC&GS, USCE, and MRC
Topography by USGS and USCE, 1926 to 1939
Revised by MRC from aerial photographs taken 1952
Field check 1953

Polycyclic projection, 1927 North American datum
10,000-foot grids based on Illinois coordinate system,
west zone, Kentucky coordinate system, south zone,
and Missouri coordinate system, east zone
1000-meter Universal Transverse Mercator grid ticks,
zone 16, shown in blue

Unchecked elevations are shown in brown
Distances on the Ohio and Mississippi Rivers
are shown at 5-mile intervals



THIS MAP COMPLIES WITH NATIONAL MAP ACCURACY STANDARDS
FOR SALE BY U. S. GEOLOGICAL SURVEY, DENVER 25, COLORADO OR WASHINGTON 25, D. C.,
THE STATE GEOLOGICAL SURVEY, URBANA, ILLINOIS, MISSOURI GEOLOGICAL SURVEY, ROLLA, MISSOURI,
KENTUCKY AGRICULTURAL AND INDUSTRIAL DEVELOPMENT BOARD, FRANKFORT, KENTUCKY,
AND BY MISSISSIPPI RIVER COMMISSION, VICKSBURG, MISSISSIPPI
A FOLDER DESCRIBING TOPOGRAPHIC MAPS AND SYMBOLS IS AVAILABLE ON REQUEST

ROAD CLASSIFICATION
Heavy duty ——— Light duty ———
Unimproved dirt ———
U. S. Route ——— State Route ———



CAIRO, ILL.-KY.-MO.
N 3700-W 8900/15

1953
AMS 3158 II-SERIES V763