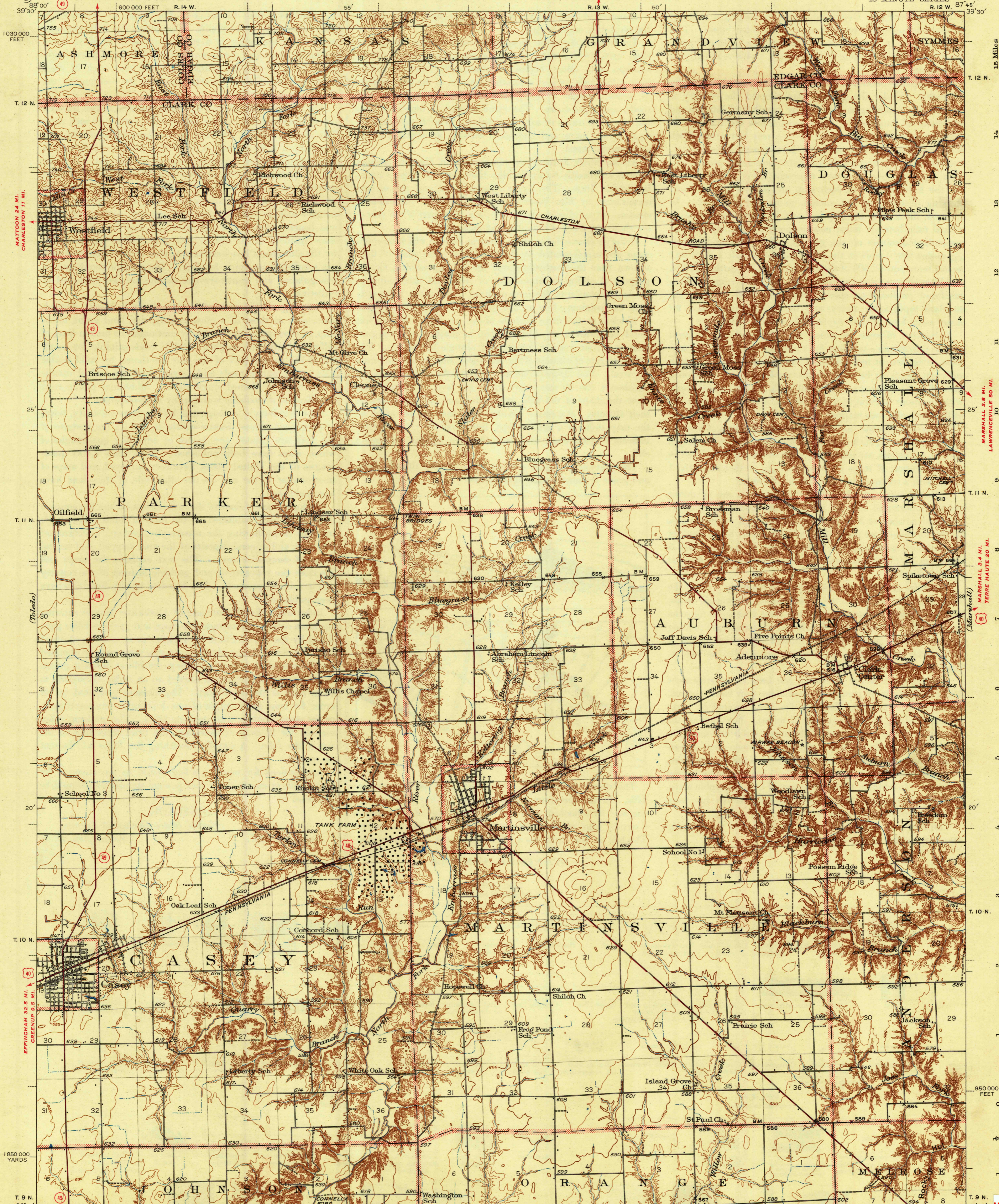


PARIS 19 MI.  
JUNC. STATE NO. 16 3 MI.

UNITED STATES  
DEPARTMENT OF THE INTERIOR  
GEOLOGICAL SURVEY

STATE OF ILLINOIS  
DWIGHT H. GREEN, GOVERNOR  
DEPARTMENT OF REGISTRATION AND EDUCATION  
FRANK G. THOMPSON, DIRECTOR  
GEOLOGICAL SURVEY DIVISION, M. M. LEIGHTON, CHIEF, URBANA, ILLINOIS

ILLINOIS  
CASEY QUADRANGLE  
15-MINUTE SERIES



MATTOON 24 MI.  
CHARLESTON 11 MI.

(Iowa)

T. 10 N.

EFFINGHAM 32.5 MI.  
GREENUP 9.2 MI.

T. 9 N.

Topography by W.S. Beames, C.C. Holder,  
J.G. Ransom, G.N. Tex, W.C. Elledge, Harry McDermitt,  
J.T. Schultz, D.R. Cabaniss, and F.W. Weber  
Surveyed in 1936, 1937, and 1942

YALE 11 MI.  
ROBINSON (VIA STATE NO. 33) 35 MI.

APPROXIMATE MEAN  
DECLINATION, 1938

Scale 62500  
1 2 3 4 5 Kilometers  
Contour interval 10 feet  
Datum is mean sea level

Beloit College Libraries  
Beloit, Wisconsin 53511

ROUTES USUALLY TRAVELED  
HARD IMPERVIOUS SURFACES  
OTHER SURFACE IMPROVEMENTS  
U. S. ROUTE 1943 STATE ROUTE

Polyconic projection, 1927 North American datum  
5000 yard grid based on U.S. zone system, C  
10000 foot grid based on Illinois (East)  
rectangular coordinate system

WEST UNION (JUNC. STATE NO. 1) 6 MI.  
CASEY, ILL.  
Edition of 1943  
N3915-W8745/15

USGS Library  
Reston, VA.  
Topo Archive