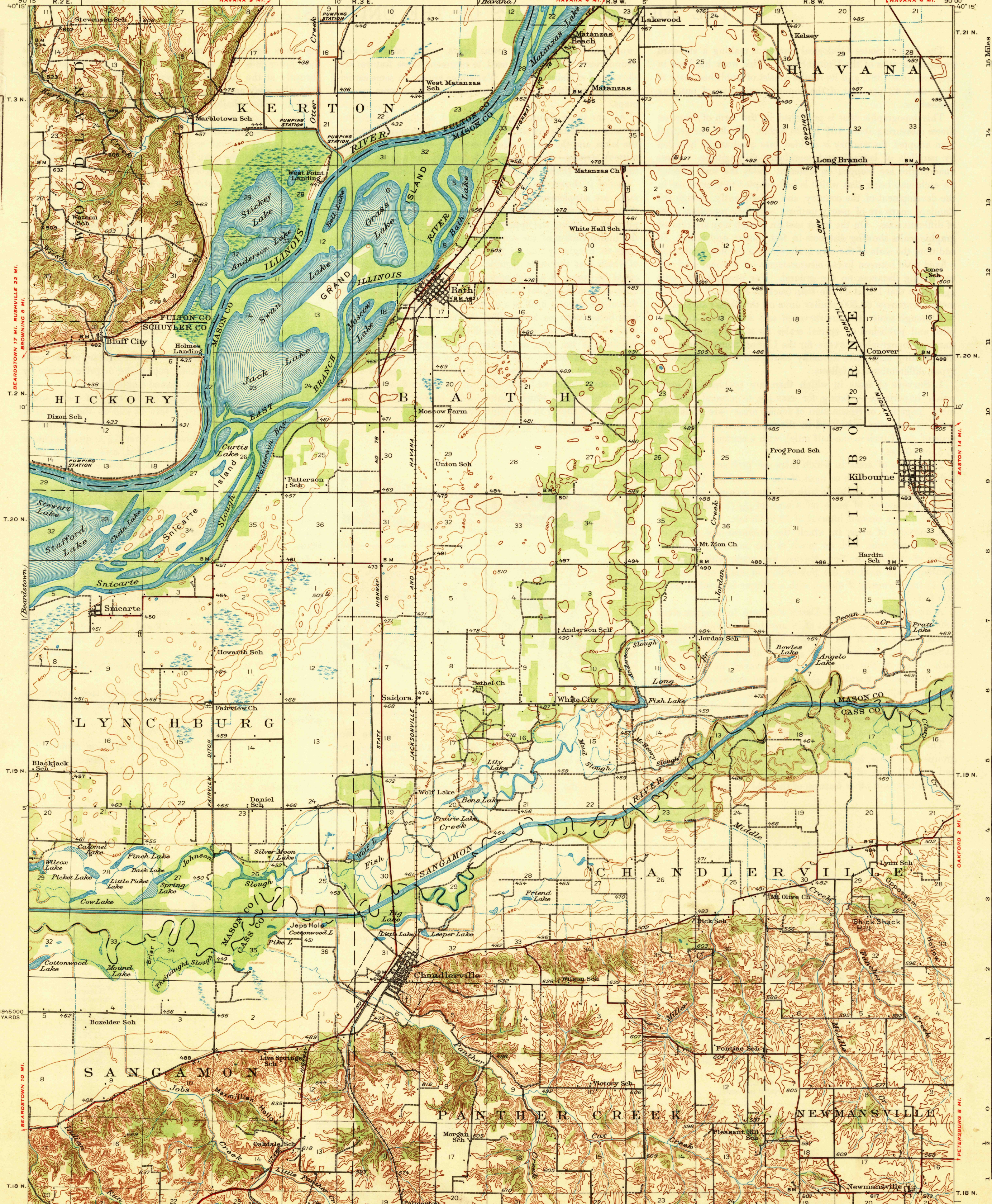


U.S.G.S.  
FILE COPY  
Inspection and Editing.

DEPARTMENT OF THE INTERIOR  
U.S. GEOLOGICAL SURVEY

STATE OF ILLINOIS  
DEPARTMENT OF REGISTRATION AND EDUCATION  
M.F. WALSH, DIRECTOR  
GEOLOGICAL SURVEY DIVISION, M.M. LEIGHTON, CHIEF, URBANA, ILLINOIS  
(Havana) HAVANA 4 MI. R.9 W. 5'

ILLINOIS  
CHANDLERVILLE QUADRANGLE  
R.8 W. 20' HAVANA 4 MI. 90°00'



Topography by F.A. Danforth, J.A. Duck, W.S. Gehres,  
W.S. Beames, W.E. Baird, and J.T. Schultz  
Culture and drainage in part compiled from aerial photographs  
taken by Air Corps, U.S. Army  
Control by U.S. Geological Survey and  
Corps of Engineers, U.S. Army  
Surveyed in 1924, 1928, 1929, and 1930

Scale 62500  
1 inch = 1 mile  
1:62,500  
5 Kilometers

Contour interval 20 feet  
Datum is mean sea level

USGS  
Historical File  
Topographic Division  
FILE COPY  
Inspection and Editing.

Polyconic projection, North American datum  
5000 yard grid based upon U.S. zone system, C

CHANDLERVILLE, ILL.  
Edition of 1932

SEP 15 1932