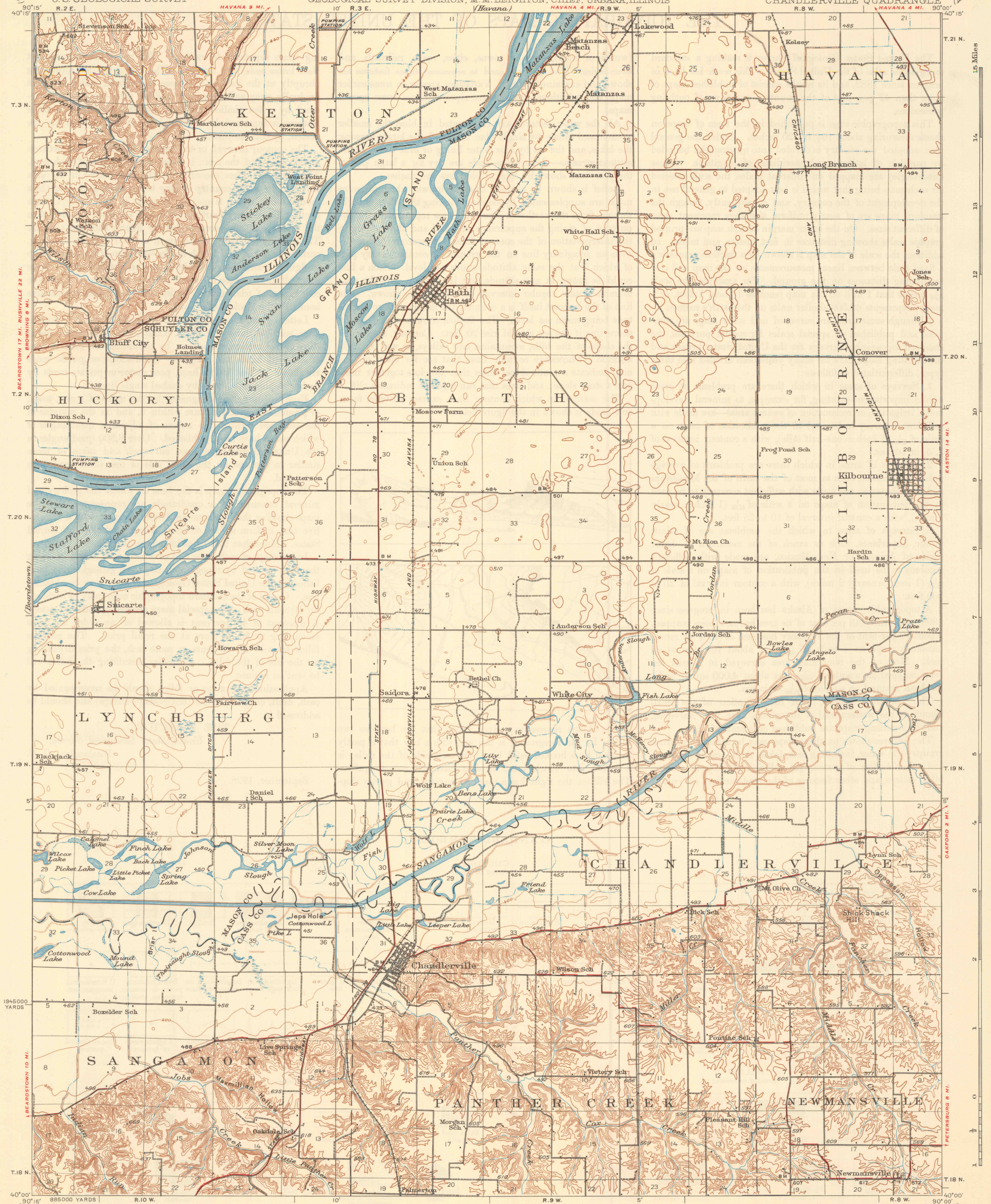


DEPARTMENT OF THE INTERIOR
U.S. GEOLOGICAL SURVEY

STATE OF ILLINOIS
DEPARTMENT OF REGISTRATION AND EDUCATION
M.F. WALSH, DIRECTOR
GEOLOGICAL SURVEY DIVISION, M.M. LEIGHTON, CHIEF, URBANA, ILLINOIS

ILLINOIS
CHANDLERVILLE QUADRANGLE



Topography by F.A. Danforth, J.A. Duck, W.S. Gehres,
W.S. Beames, W.E. Baird, and J.T. Schultz
Culture and drainage in part compiled from aerial photographs
taken by Air Corps, U.S. Army
Control by U.S. Geological Survey and
Corps of Engineers, U.S. Army
Surveyed in 1924, 1926, 1929, and 1930

Scale 62500
1 inch = 1 mile
0 1 2 3 4 Miles
0 5000 10000 15000 20000 Feet
0 5 Kilometers
Contour interval 20 feet
Datum is mean sea level

Polyconic projection, North American datum
5000 yard grid based upon U.S. zone system, C
HARD IMPROVISED SURFACED ROADS
OTHER MAIN TRAVELED ROADS
1932
CHANDLERVILLE, ILL.
Edition of 1932