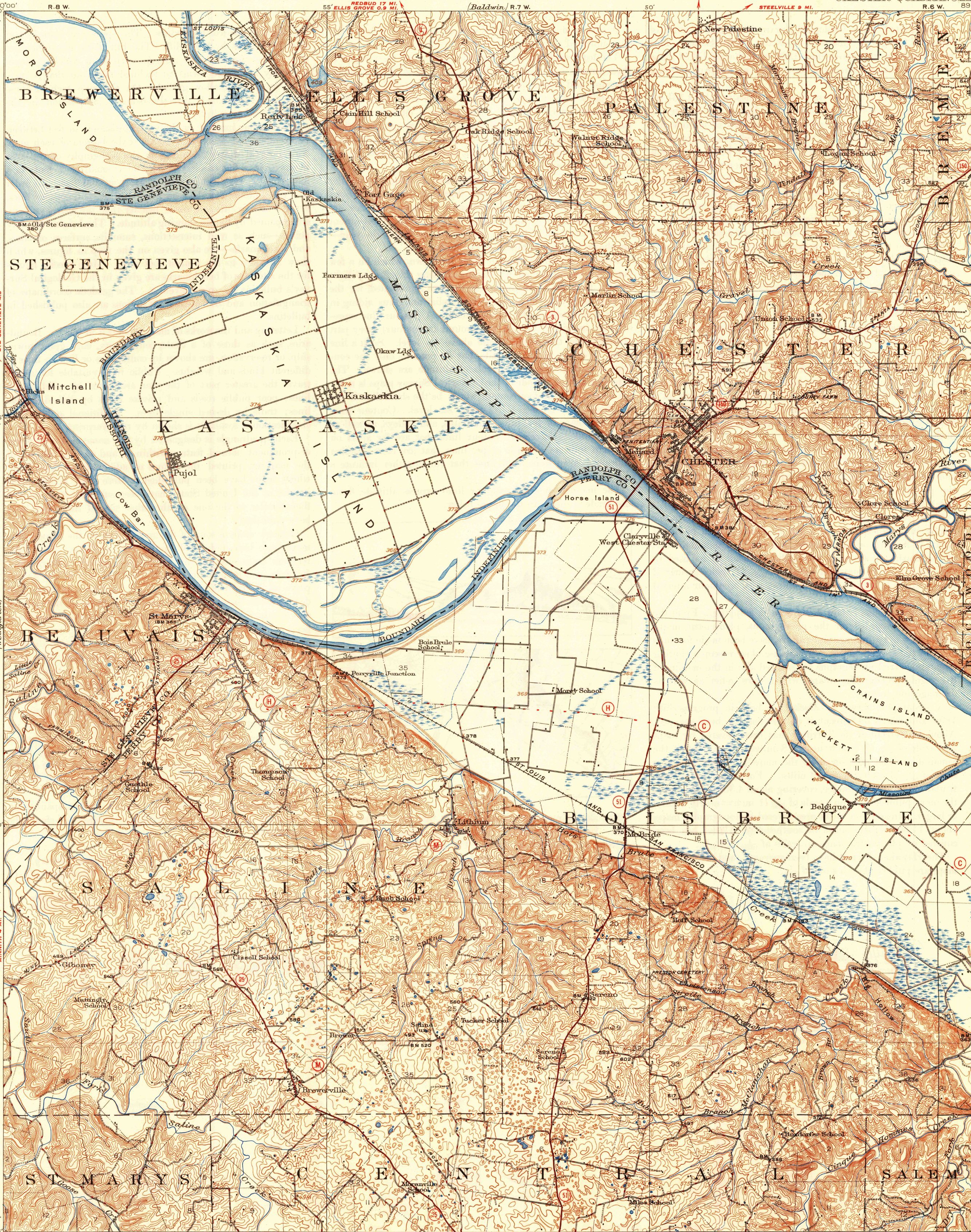


UNITED STATES
DEPARTMENT OF THE INTERIOR
GEOLOGICAL SURVEY

U. S. G. S.
FILE COPY

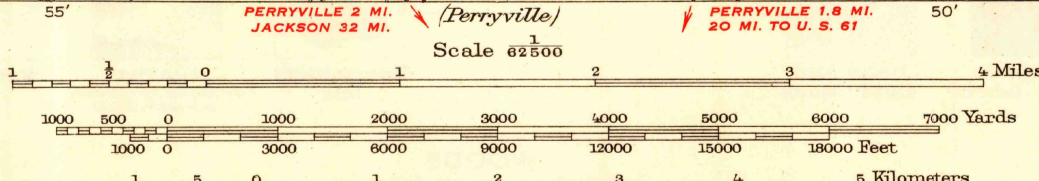
STATE OF ILLINOIS
DWIGHT H. GREEN, GOVERNOR.
DEPARTMENT OF REGISTRATION AND EDUCATION
FRANK G. THOMPSON, DIRECTOR.
GEOLOGICAL SURVEY DIVISION, M. M. LEIGHTON, CHIEF, URBANA, ILLINOIS

ILLINOIS - MISSOURI
CHESTER QUADRANGLE



Topography by Frank W. Hughes, E. L. Hain,
C. H. Nelson, F. B. Barrett, G. W. Lucas, W. F. Hicks,
and E. W. McCrory.
Control by Mississippi River Commission, J. R. Ellis,
F. E. Fletcher, R. G. Clinite, and S. W. Lucas.
Surveyed in 1912-1913.
Culture revised in part 1938 and 1947
SURVEYED IN COOPERATION WITH THE STATE OF ILLINOIS.

TRUE NORTH
MAGNETIC NORTH
APPROXIMATE MEAN
DECLINATION, 1913.



Edition of 1915, reprinted 1948 with corrections
Polyconic projection North American datum

ROAD CLASSIFICATION
HARD-SURFACE ALL WEATHER ROADS DRY WEATHER ROADS
Heavy-duty ———— **LANE LANE** Improved dirt ————
Medium-duty ———— **LANE LANE** Unimproved dirt ————
Loose-surface, graded, or narrow hard-surface ————
U. S. Route State Route

USCS
Historical File
Topographic Division

U. S. G. S.
FILE COPY
Inspection and Editing.

CHESTER, ILL.-MO.
N3745-W8945/15

OCT 1 1948

2070