

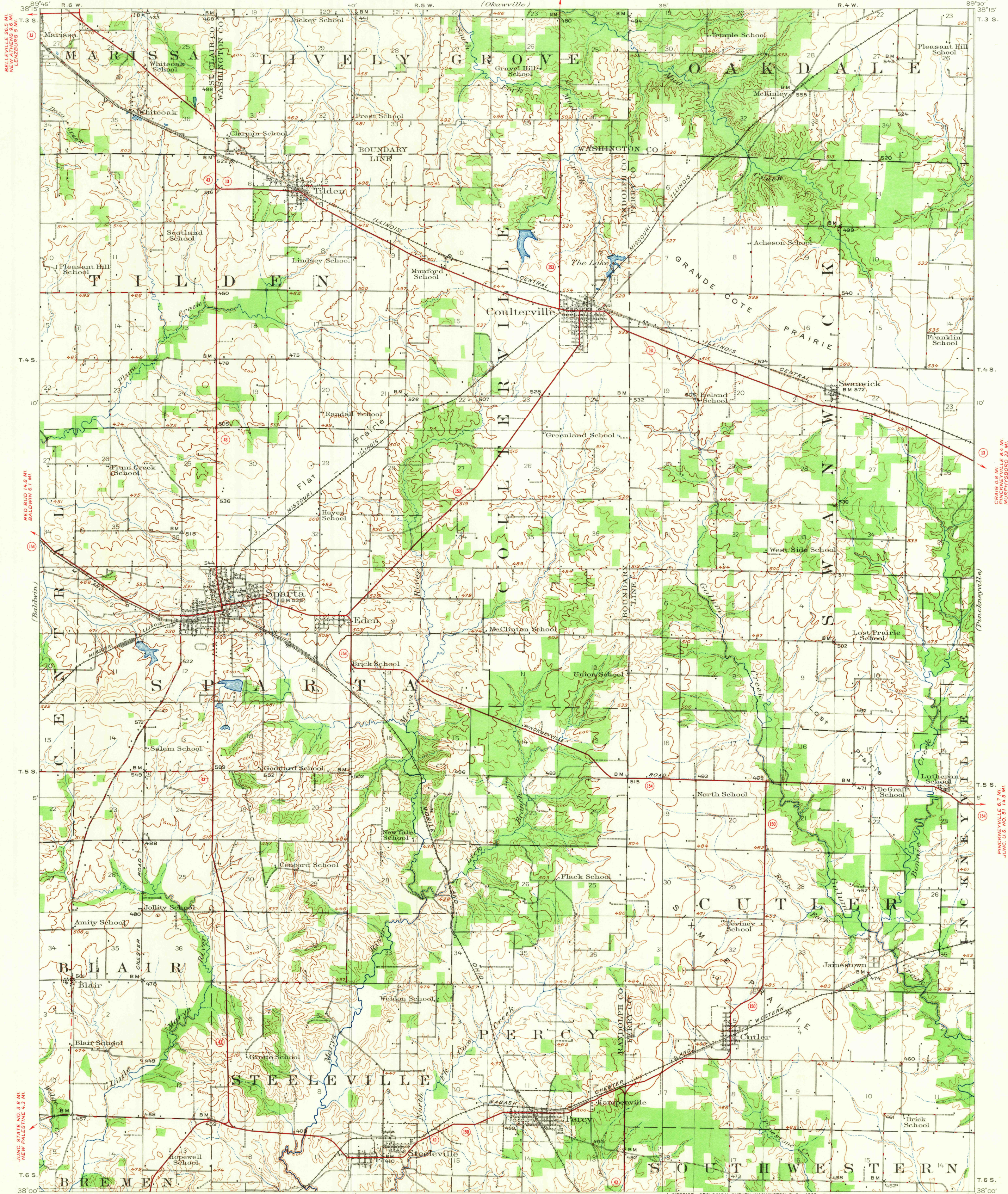
LEBANON (JUNC. U.S. NO. 50) 29.5 MI.
FAYETTEVILLE 13 MI.
JUNC. STATE NO. 110 8.4 MI.

JUNC. STATE NO. 110 7.9 MI.
LIVELY GROVE 3.9 MI.

UNITED STATES
DEPARTMENT OF THE INTERIOR
GEOLOGICAL SURVEY

STATE OF ILLINOIS
DWIGHT H. GREEN, GOVERNOR
DEPARTMENT OF REGISTRATION AND EDUCATION
FRANK G. THOMPSON, DIRECTOR
GEOLOGICAL SURVEY DIVISION, M. M. LEIGHTON, CHIEF, URBANA, ILLINOIS
(Okawville)

ILLINOIS
COULTERVILLE QUADRANGLE



LEBANON (JUNC. U.S. NO. 50) 29.5 MI.
FAYETTEVILLE 13 MI.
JUNC. STATE NO. 110 8.4 MI.

JUNC. STATE NO. 110 7.9 MI.
LIVELY GROVE 3.9 MI.

LEBANON (JUNC. U.S. NO. 50) 29.5 MI.
FAYETTEVILLE 13 MI.
JUNC. STATE NO. 110 8.4 MI.

JUNC. STATE NO. 110 7.9 MI.
LIVELY GROVE 3.9 MI.

LEBANON (JUNC. U.S. NO. 50) 29.5 MI.
FAYETTEVILLE 13 MI.
JUNC. STATE NO. 110 8.4 MI.

LEBANON (JUNC. U.S. NO. 50) 29.5 MI.
FAYETTEVILLE 13 MI.
JUNC. STATE NO. 110 8.4 MI.

LEBANON (JUNC. U.S. NO. 50) 29.5 MI.
FAYETTEVILLE 13 MI.
JUNC. STATE NO. 110 8.4 MI.

LEBANON (JUNC. U.S. NO. 50) 29.5 MI.
FAYETTEVILLE 13 MI.
JUNC. STATE NO. 110 8.4 MI.

FOR SALE BY U.S. GEOLOGICAL SURVEY, WASHINGTON, D.C. 20242
A FOLDER DESCRIBING TOPOGRAPHIC MAPS AND SYMBOLS IS AVAILABLE ON REQUEST

USGS
Topographic Division

FILE COPY
TOPOGRAPHIC DIVISION

COULTERVILLE, ILL.
N3800-W8930/15
1914

OCT 4 1965
1265