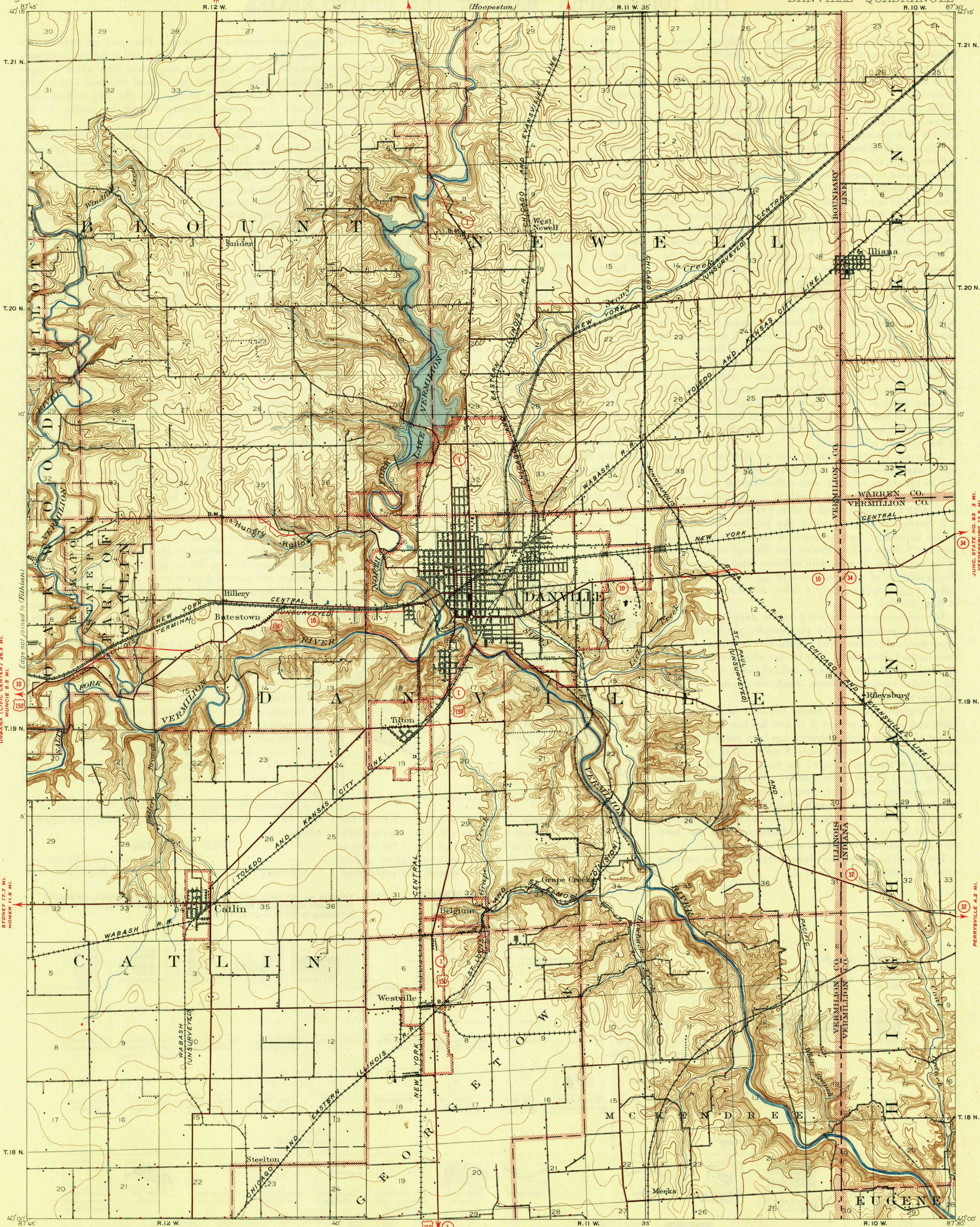


STATE OF ILLINOIS JUNC. STATE NO. 119 2.5 MI.  
WATSEKA 40 MI. DWIGHT H. GREEN, GOVERNOR. BISMARCK 1 MI.  
ROSSVILLE 8.9 MI.

ILLINOIS-INDIANA  
DANVILLE QUADRANGLE

UNITED STATES  
DEPARTMENT OF THE INTERIOR  
GEOLOGICAL SURVEY

DEPARTMENT OF REGISTRATION AND EDUCATION  
FRANK G. THOMPSON, DIRECTOR  
GEOLOGICAL SURVEY DIVISION, M. M. LEIGHTON, CHIEF, URBANA, ILLINOIS



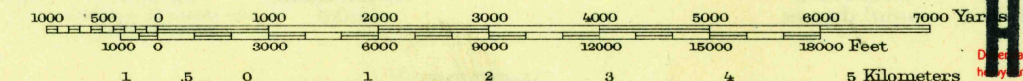
URBANA (CIVIC CENTER) 26.5 MI.  
HUNCE 5.5 MI.  
EDGE NOT JOINED TO TILTON  
SYDNEY 17.7 MI.  
HOMER 11.5 MI.

JUNC. STATE NO. 83 3 MI.  
VEEDERSBURG 12.5 MI.

PERRYSVILLE 4.2 MI.

Jno. H. Renshaw, Geographer in charge.  
Control by U.S. Lake Survey and Geo. T. Hawkins.  
Topography by W. J. Lloyd.  
Surveyed in 1897.

GEORGETOWN 1.4 MI. PARIS 27 MI. Scale 62500



Contour interval 10 feet  
Datum is mean sea level

Edition of Nov. 1900, reprinted 1946  
with corrections

HISTORICAL FILES

FILE COPY  
NOT TO BE REMOVED FROM FILES

(DO NOT REMOVE)

DANVILLE, ILL.-IND.  
N4000-W8730/15