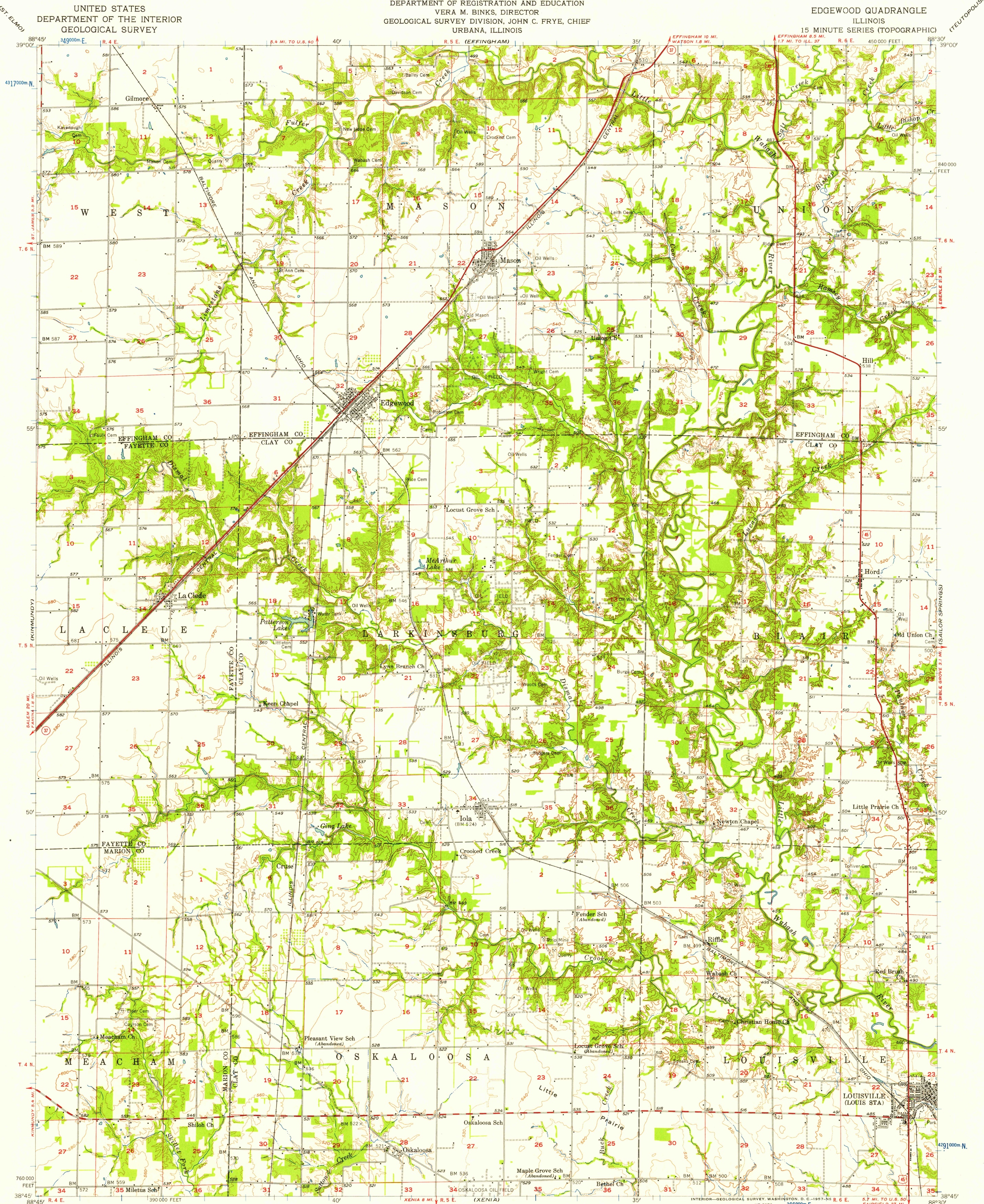


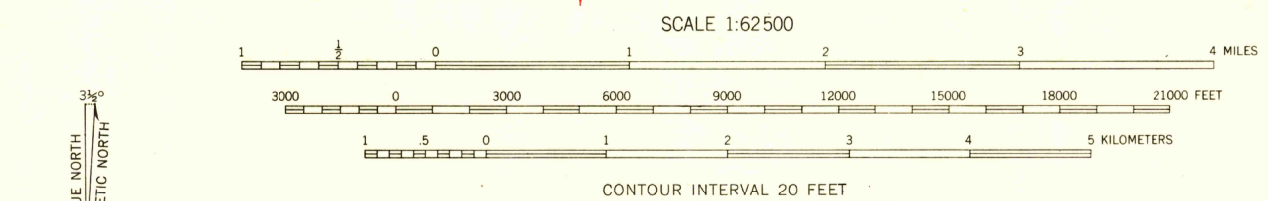
STATE OF ILLINOIS  
 WILLIAM G. STRATTON, GOVERNOR  
 DEPARTMENT OF REGISTRATION AND EDUCATION  
 VERA M. BINKS, DIRECTOR  
 GEOLOGICAL SURVEY DIVISION, JOHN C. FRYE, CHIEF  
 URBANA, ILLINOIS

UNITED STATES  
 DEPARTMENT OF THE INTERIOR  
 GEOLOGICAL SURVEY

EDGEWOOD QUADRANGLE  
 ILLINOIS  
 15 MINUTE SERIES (TOPOGRAPHIC)



Mapped, edited, and published by the Geological Survey  
 Control by USGS and USC&GS  
 Culture and drainage in part compiled from aerial photographs  
 taken 1953. Topography by planimeter surveys 1955-1956  
 Polyconic projection. 1927 North American datum  
 10,000-foot grid based on Illinois coordinate system, east zone  
 1000-meter Universal Transverse Mercator grid ticks,  
 zone 16, shown in blue



USGS  
 Historical File  
 Topographic Division

ROAD CLASSIFICATION  
 Heavy-duty ——— Light-duty ———  
 Medium-duty ——— Unimproved dirt ———  
 U. S. Route —○— State Route —○—

U.S.G.S.  
 FILE COPY  
 TOPOGRAPHIC DIVISION

QUADRANGLE LOCATION  
 ILLINOIS

JUN 20 1957

THIS MAP COMPLIES WITH NATIONAL MAP ACCURACY STANDARDS  
 FOR SALE BY U. S. GEOLOGICAL SURVEY, WASHINGTON 25, D. C.  
 AND BY THE STATE GEOLOGICAL SURVEY, URBANA, ILLINOIS  
 A FOLDER DESCRIBING TOPOGRAPHIC MAPS AND SYMBOLS IS AVAILABLE ON REQUEST

EDGEWOOD, ILL.  
 N 3845 - W 8830 / 15  
 1956