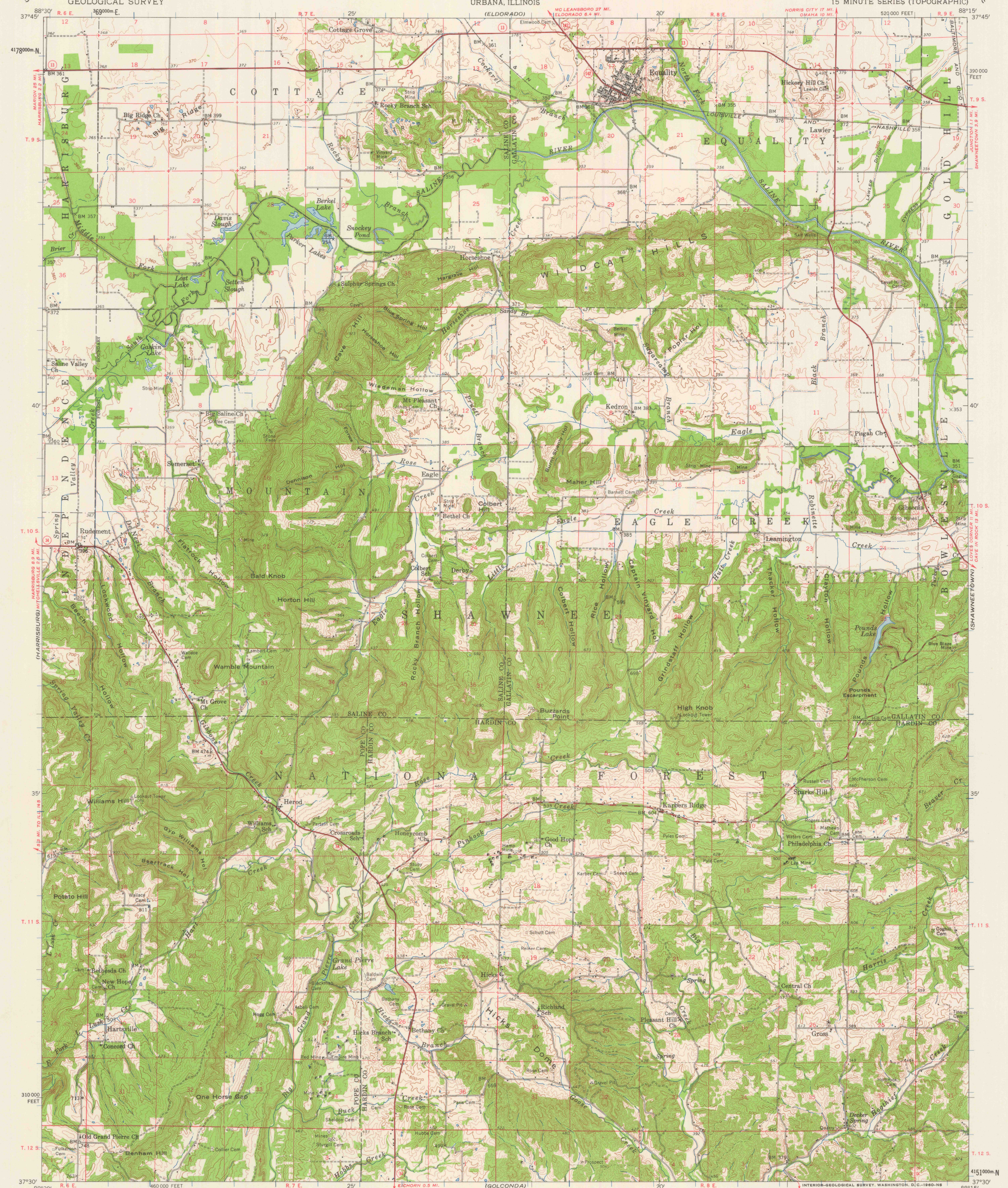


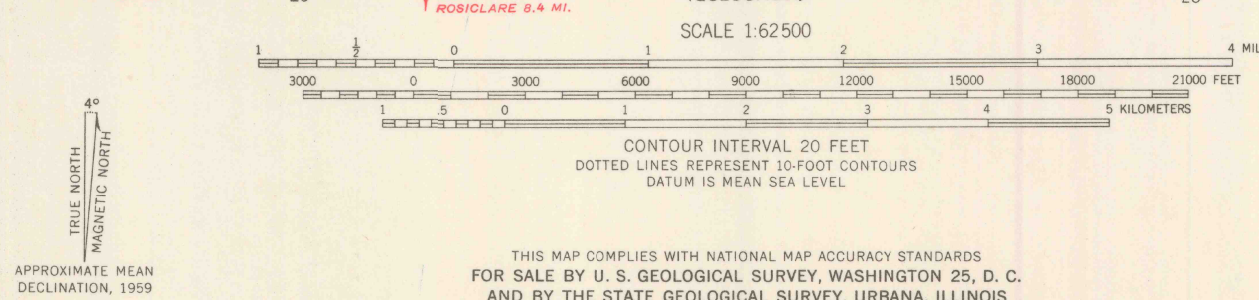
STATE OF ILLINOIS  
 WILLIAM G. STRATTON, GOVERNOR  
 DEPARTMENT OF REGISTRATION AND EDUCATION  
 VERA M. BINKS, DIRECTOR  
 GEOLOGICAL SURVEY DIVISION, JOHN C. FRYE, CHIEF  
 URBANA, ILLINOIS

EQUALITY QUADRANGLE  
 ILLINOIS  
 15 MINUTE SERIES (TOPOGRAPHIC)

UNITED STATES  
 DEPARTMENT OF THE INTERIOR  
 GEOLOGICAL SURVEY



Mapped, edited, and published by the Geological Survey  
 Control by USGS, USC&GS, and USCE  
 Compiled in 1959 from 1:24,000-scale maps of  
 Equality, Rudement, Herod, and Karbers Ridge  
 7.5 minute quadrangles, surveyed 1959  
 Topography from aerial photographs by photogrammetric methods  
 and by planetable surveys. Aerial photographs taken 1957  
 Polyconic projection. 1927 North American datum  
 10,000-foot grid based on Illinois coordinate system, east zone  
 1000-meter Universal Transverse Mercator grid ticks,  
 zone 16, shown in blue



USGS  
 Historical File  
 Topographic Division

ROAD CLASSIFICATION  
 Heavy-duty  
 Medium-duty  
 Light-duty  
 Unimproved dirt  
 State Route

U.S.G.S.  
 FILE COPY  
 TOPOGRAPHIC DIVISION

QUADRANGLE LOCATION  
 ILLINOIS  
 EQUALITY, ILL.  
 N3730-W8815/15  
 1959

JUN 14 1960  
 1955

THIS MAP COMPLIES WITH NATIONAL MAP ACCURACY STANDARDS  
 FOR SALE BY U. S. GEOLOGICAL SURVEY, WASHINGTON 25, D. C.  
 AND BY THE STATE GEOLOGICAL SURVEY, URBANA, ILLINOIS  
 A FOLDER DESCRIBING TOPOGRAPHIC MAPS AND SYMBOLS IS AVAILABLE ON REQUEST