

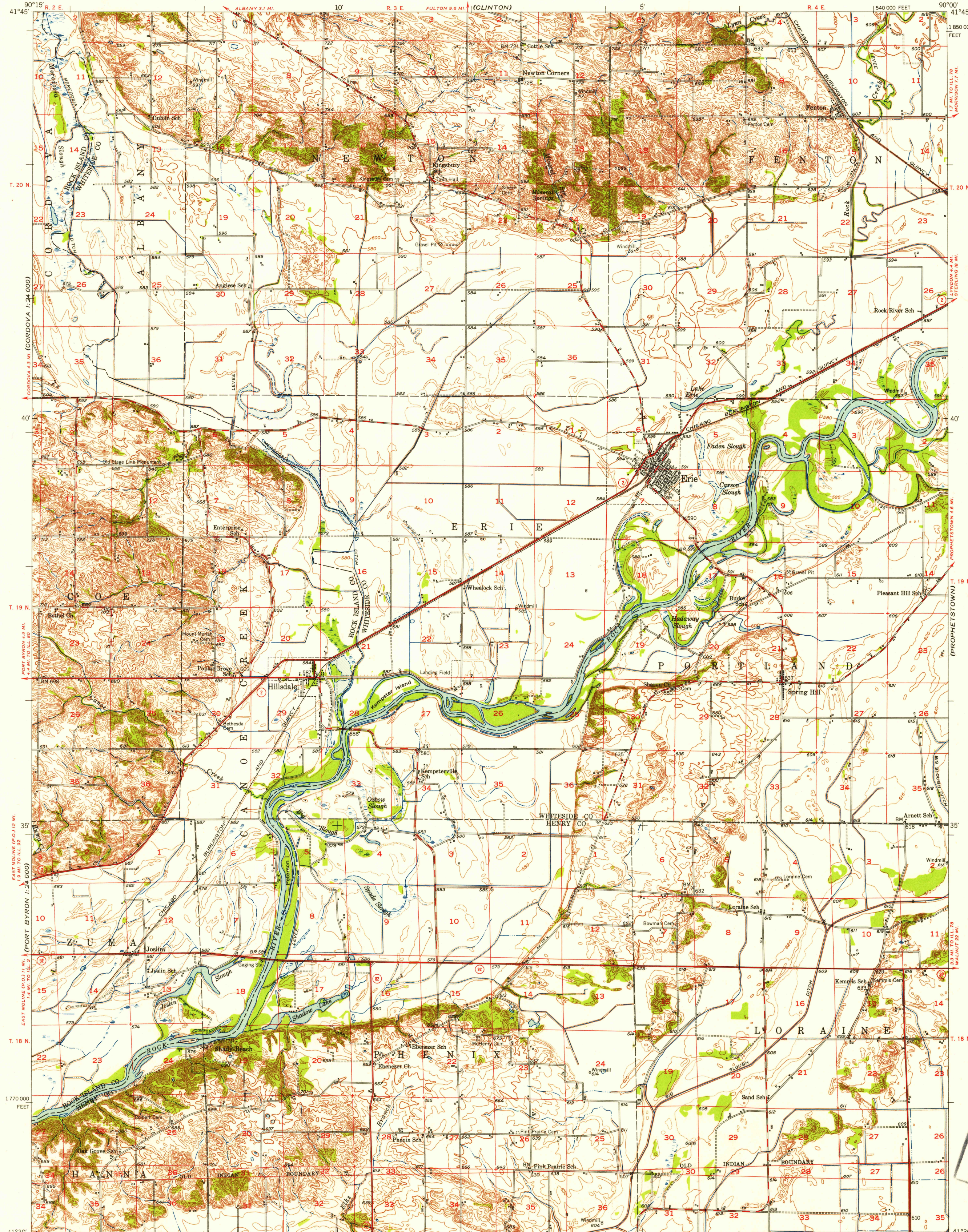
CORDOVA
1:25,000

UNITED STATES
DEPARTMENT OF THE INTERIOR
GEOLOGICAL SURVEY

STATE OF ILLINOIS
WILLIAM G. STRATTON, GOVERNOR
DEPARTMENT OF REGISTRATION AND EDUCATION
VERA M. BINKS, DIRECTOR
GEOLOGICAL SURVEY DIVISION, M. M. LEIGHTON, CHIEF
URBANA, ILLINOIS

ERIE QUADRANGLE
ILLINOIS
15 MINUTE SERIES (TOPOGRAPHIC)

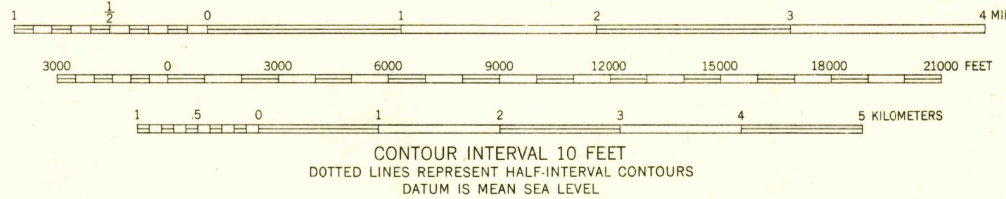
(MORRISON)



U.S.G.S.
FILE COPY
Inspection and Editing

Mapped, edited, and published by the Geological Survey
Control by USGS and USC&GS
Topography from aerial photographs by Kelsh plotter
and by plane-table surveys 1952. Aerial photographs taken 1951
Polyconic projection. 1927 North American datum
10,000-foot grid based on Illinois coordinate system,
west zone

TRUE NORTH
MAGNETIC NORTH
APPROXIMATE MEAN
DECLINATION, 1952



USGS
Historical File
Topographic Division
ROAD CLASSIFICATION
Heavy-duty ——— 4 LANE 16 LANE Light-duty ———
Medium-duty ——— 2 LANE 16 LANE Unimproved dirt ———
U. S. Route ——— State Route ———



ERIE, ILL.
N4130-W9000/15

U.S.G.S.
FILE COPY
Inspection and Editing

(ANNAPOLIS)

THIS MAP COMPLIES WITH NATIONAL MAP ACCURACY STANDARDS
FOR SALE BY U. S. GEOLOGICAL SURVEY, WASHINGTON 25, D. C.
AND BY THE STATE GEOLOGICAL SURVEY, URBANA, ILLINOIS
A FOLDER DESCRIBING TOPOGRAPHIC MAPS AND SYMBOLS IS AVAILABLE ON REQUEST

1952
DEC 28 1953
3215