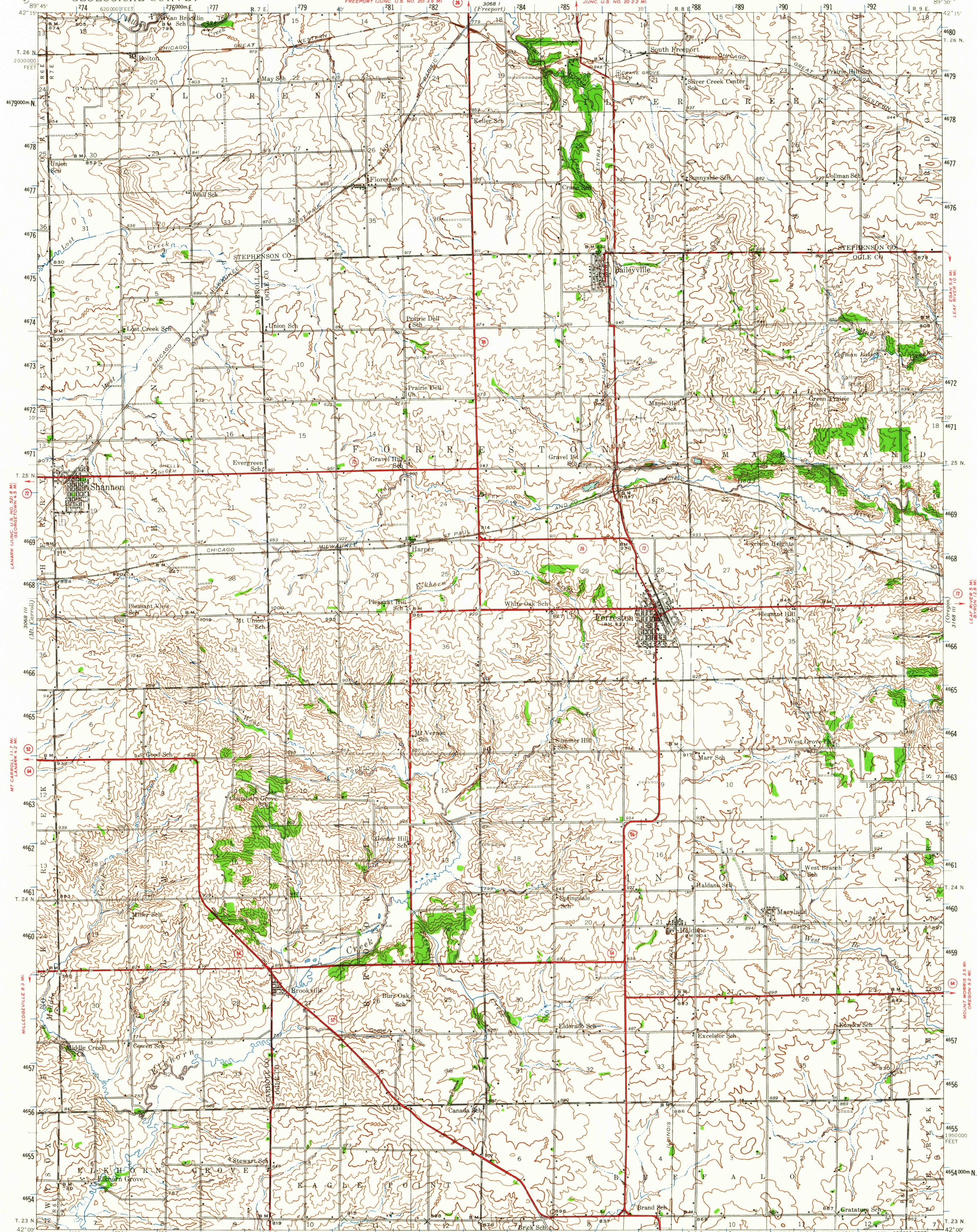


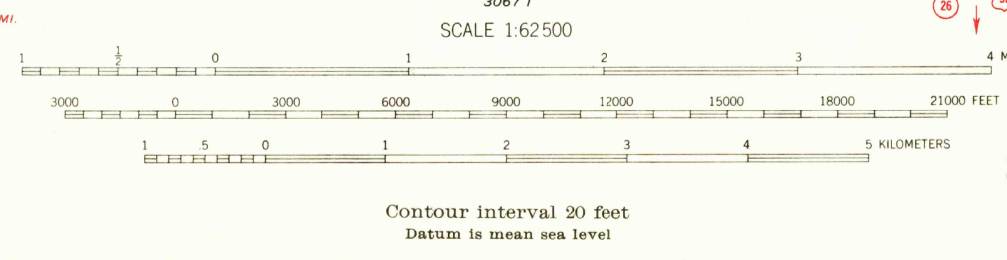
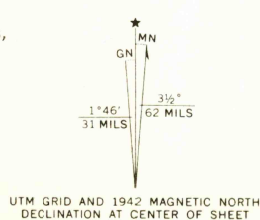
UNITED STATES
DEPARTMENT OF THE INTERIOR
GEOLOGICAL SURVEY

STATE OF ILLINOIS
Dwight H. Green, GOVERNOR
DEPARTMENT OF REGISTRATION AND EDUCATION
FRANK G. THOMPSON, DIRECTOR
GEOLOGICAL SURVEY DIVISION, M. M. LEIGHTON, CHIEF, URBANA, ILLINOIS

ILLINOIS
FORRESTON QUADRANGLE
15-MINUTE SERIES



Map by the Geological Survey
1930, 1940 and 1942
1000-meter Universal Transverse Mercator grid ticks,
zone 16, shown in blue



USGS
Historical File
Topographic Division
Polyconic projection, 1927 North American datum
10000 foot grid based on Illinois (West)
rectangular coordinate system
To join Oregon map use dotted projection corners

ROUTES USUALLY TRAVELED
HARD IMPROVED SURFACES
OTHER SURFACE IMPROVEMENTS
U.S. ROUTE 1945 STATE ROUTE
FORRESTON, ILL.
N4200-W8930/15
1942

FOR SALE BY U.S. GEOLOGICAL SURVEY, WASHINGTON, D. C. 20242
AND STATE GEOLOGICAL SURVEY, URBANA, ILLINOIS
A FOLDER DESCRIBING TOPOGRAPHIC MAPS AND SYMBOLS IS AVAILABLE ON REQUEST

FILE COPY
TOPOGRAPHIC DIVISION

JUN 1 6 1965
1035