

(Windsor)

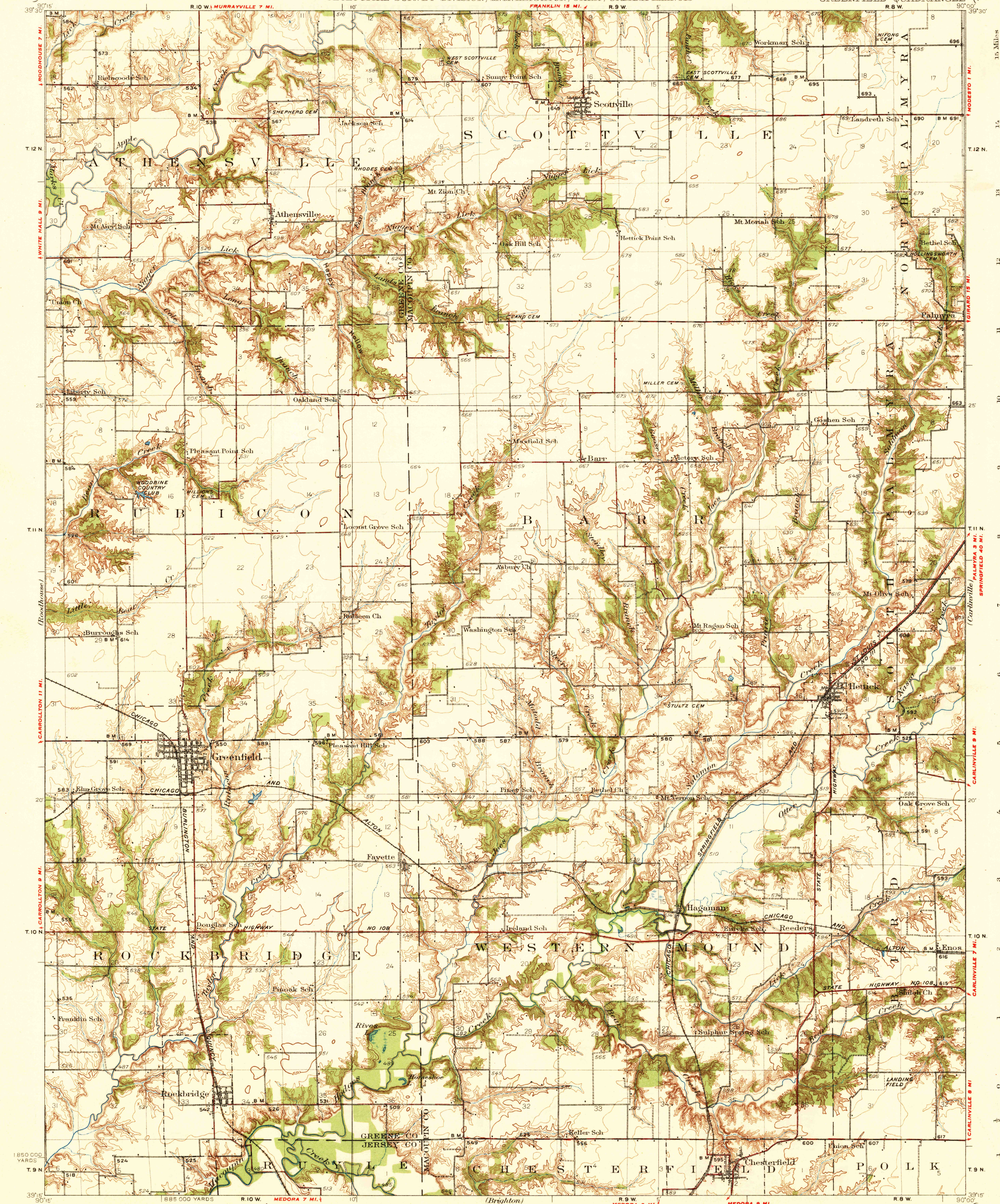
U. S. G. S.
FILE COPY
Inspection and Editing.

STATE OF ILLINOIS
DEPARTMENT OF REGISTRATION AND EDUCATION
M.F. WALSH, DIRECTOR
GEOLOGICAL SURVEY DIVISION, M.M. LEIGHTON, CHIEF, URBANA ILLINOIS

U. S. G. S.
FILE COPY
Inspection and Editing.

ILLINOIS
GREENFIELD QUADRANGLE

(Waverly)



Topography by J.A. Duck, W.R. Chenoweth,
W.S. Beames, A.T. Munson, and F.K. Van Zandt
Control by U.S. Geological Survey
Surveyed in 1928-1929

U. S. G. S.
FILE COPY
Inspection and Editing.

APPROXIMATE MEAN
DECLINATION, 1929

Scale 62500
Contour interval 10 feet
Datum is mean sea level

Historical File
Topographic Division

Polyconic projection, North American datum
5000 yard grid based upon U.S. zone system, C

HARD IMPERVIOUSLY SURFACED ROADS
OTHER MAIN TRAVELED ROADS
1932

AUG 31 1932 (3570)

GREENFIELD, ILL.
Edition of 1932
2624:3650; / 99;

3570