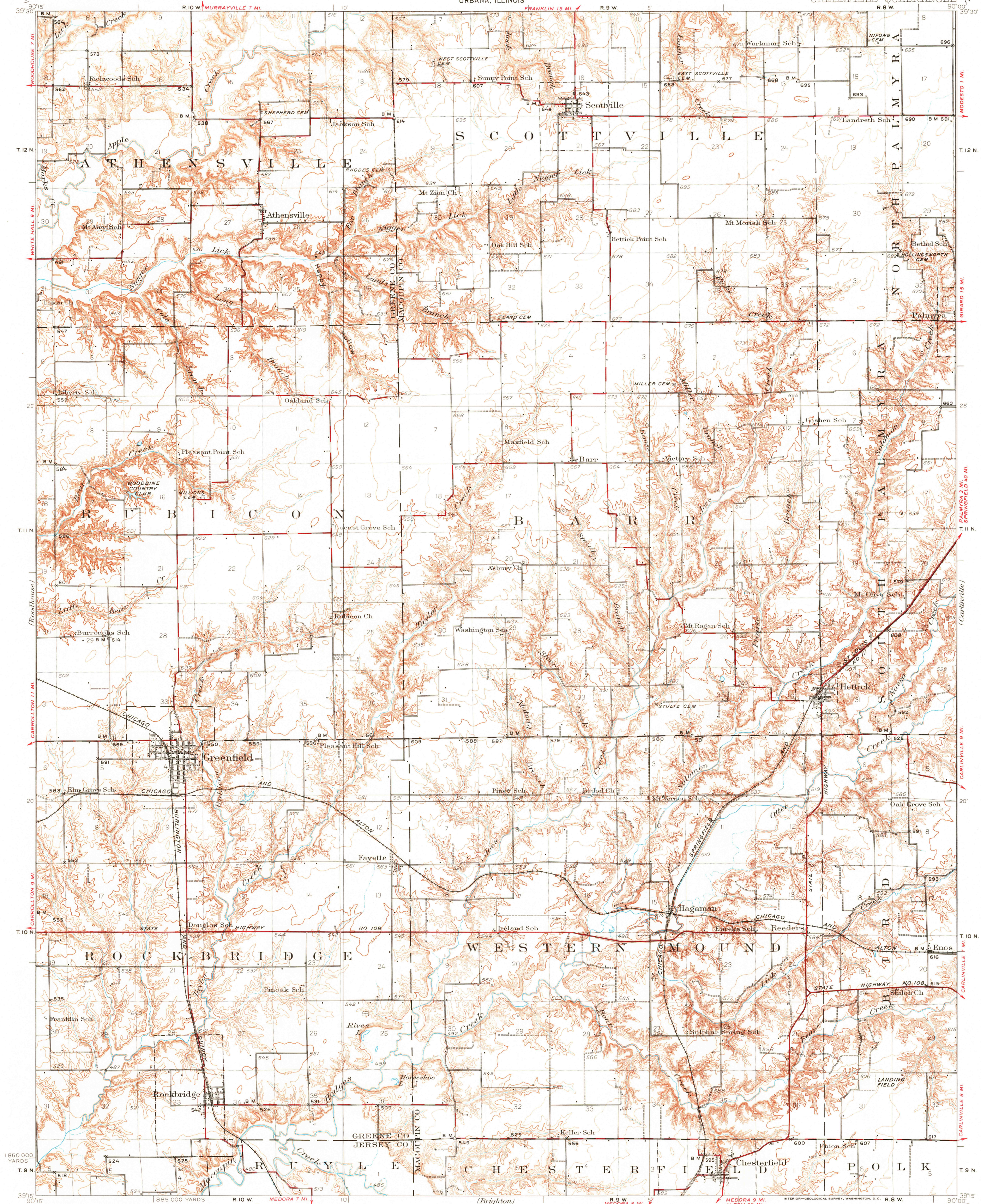


UNITED STATES
DEPARTMENT OF THE INTERIOR
GEOLOGICAL SURVEY

STATE OF ILLINOIS
DEPARTMENT OF REGISTRATION AND EDUCATION
GEOLOGICAL SURVEY DIVISION
URBANA, ILLINOIS

ILLINOIS
GREENFIELD QUADRANGLE



Topography by J.A. Duck, W.R. Chenoweth,
W.S. Beames, A.T. Munson, and F.K. Van Zandt
Control by U.S. Geological Survey
Surveyed in 1928-1929

Scale 62500
1 inch = 1 mile
1:62,500
0 5000 10000 15000 20000 Feet
0 5 10 Kilometers
Contour interval 10 feet
Datum is mean sea level

Polyconic projection, North American datum
5000 yard grid based upon U.S. zone system, C
HARD IMPROVED SURFACED ROADS
OTHER MAIN TRAVELED ROADS
1932
GREENFIELD, ILL.
Edition of 1932

USGS
HISTORICAL FILE
TOPOGRAPHIC DIVISION

APR 9 1973