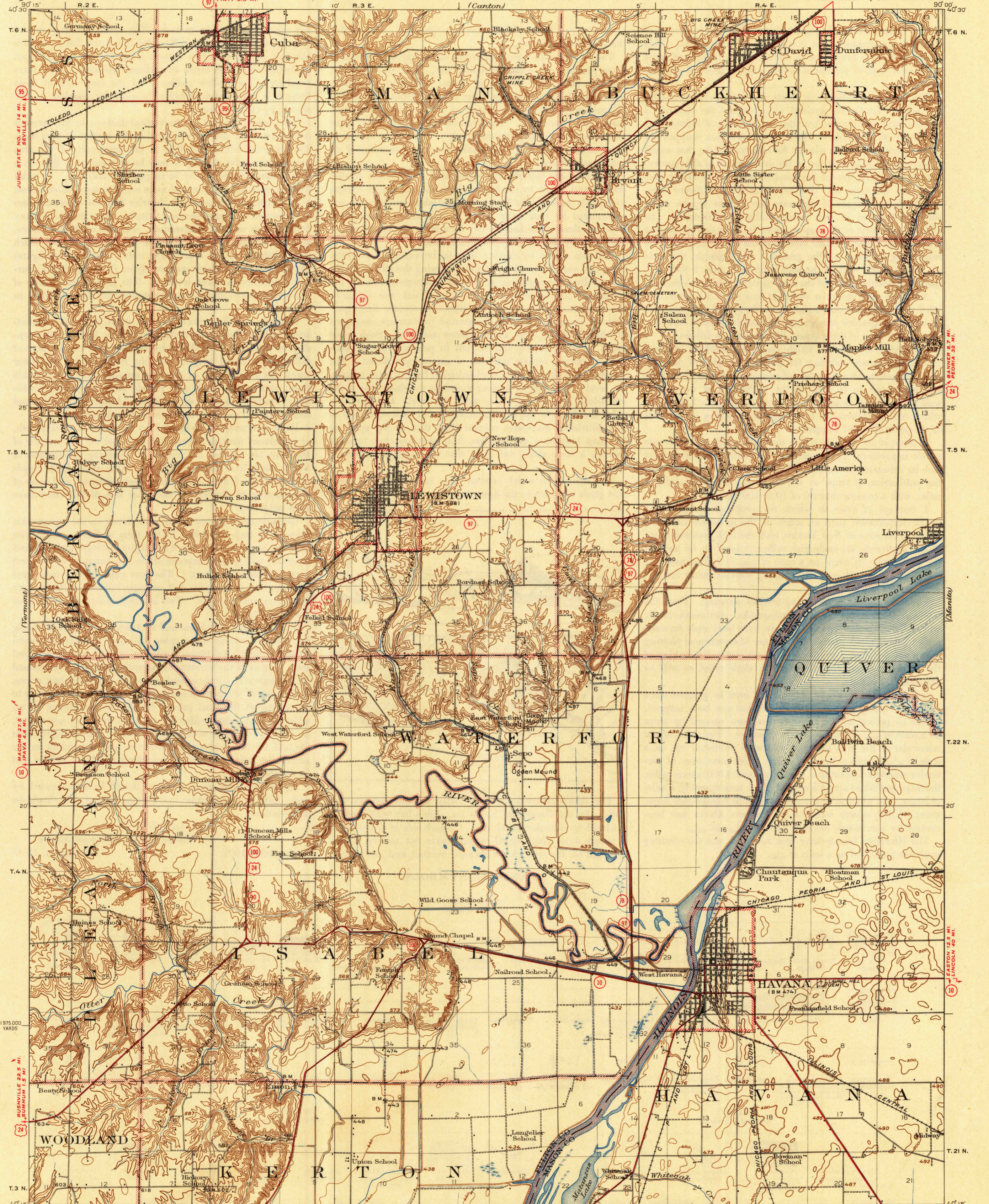


U. S. G. S.
FILE COPY
Invention and Printing.

STATE OF ILLINOIS
DWIGHT H. GREEN, GOVERNOR
DEPARTMENT OF REGISTRATION AND EDUCATION
FRANK G. THOMPSON, DIRECTOR
GEOLOGICAL SURVEY DIVISION, M. M. LEIGHTON, CHIEF, URBANA, ILLINOIS

UNITED STATES
DEPARTMENT OF THE INTERIOR
GEOLOGICAL SURVEY

FARMINGTON 14.5 MI. (78)
CANTON 3.6 MI. (100)
ILLINOIS
HAVANA QUADRANGLE (Glasford)



Topography by E.V. Perkinson, H.E. Simmons, and G.G. Martin
Control in part by Illinois River Commission and Corps of Engineers, U.S. Army
Surveyed in 1922-1923
Culture revised in part, 1942

Scale 62500
1 2 3 4 5 6 7 8 9 10 Miles
1000 500 0 1000 2000 3000 4000 5000 6000 7000 Yards
1 2 3 4 5 Kilometers
Contour interval 20 feet
Datum is mean sea level

USGS
Historical File
Topographic Division
POLYCONIC PROJECTION, NORTH AMERICAN DATUM
5000 YARD GRID BASED UPON U.S. ZONE SYSTEM, C
KILBOURNE 7.3 MI. (97)
SPRINGFIELD 43 MI. (97)

ROUTES USUALLY TRAVELED
HARD IMPERVIOUS SURFACES
OTHER SURFACE IMPROVEMENTS
U. S. ROUTE 1945
STATE ROUTE
2145
HAVANA, ILL.
Edition of 1925
reprinted 1945
with corrections
N4015-W9000/15
8/6/45