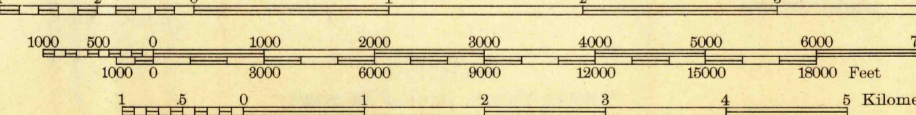


Topography by W. S. Gehres, M. J. Gleissner, H. E. Simmons, J. M. Rawls, W. S. Beames, H. S. Milsted, C. C. Holder, D. R. Cabaniss, and F. W. Weber
Surveyed in 1921, 1930, and 1937-1939

JUNC. U. S. ROUTE NO. 51 18 MI.
WEST FRANKFORT 7 MI.
MARION 18 MI.

Scale 1/62500



Historical File
Topographic Division

Polyconic projection. 1927 North American datum
5000 yard grid based on U. S. zone system, C
10000 foot grid based on Illinois (East)
rectangular coordinate system

ROUTES USUALLY TRAVELED
HARD IMPERVIOUS SURFACES
OTHER SURFACE IMPROVEMENTS
1942

U. S. ROUTE

STATE ROUTE

INA, ILL.
N3800-W8845/15
Edition of 1943

Contour interval 10 feet
Datum is mean sea level

APPROXIMATE MEAN
DECLINATION, 1939