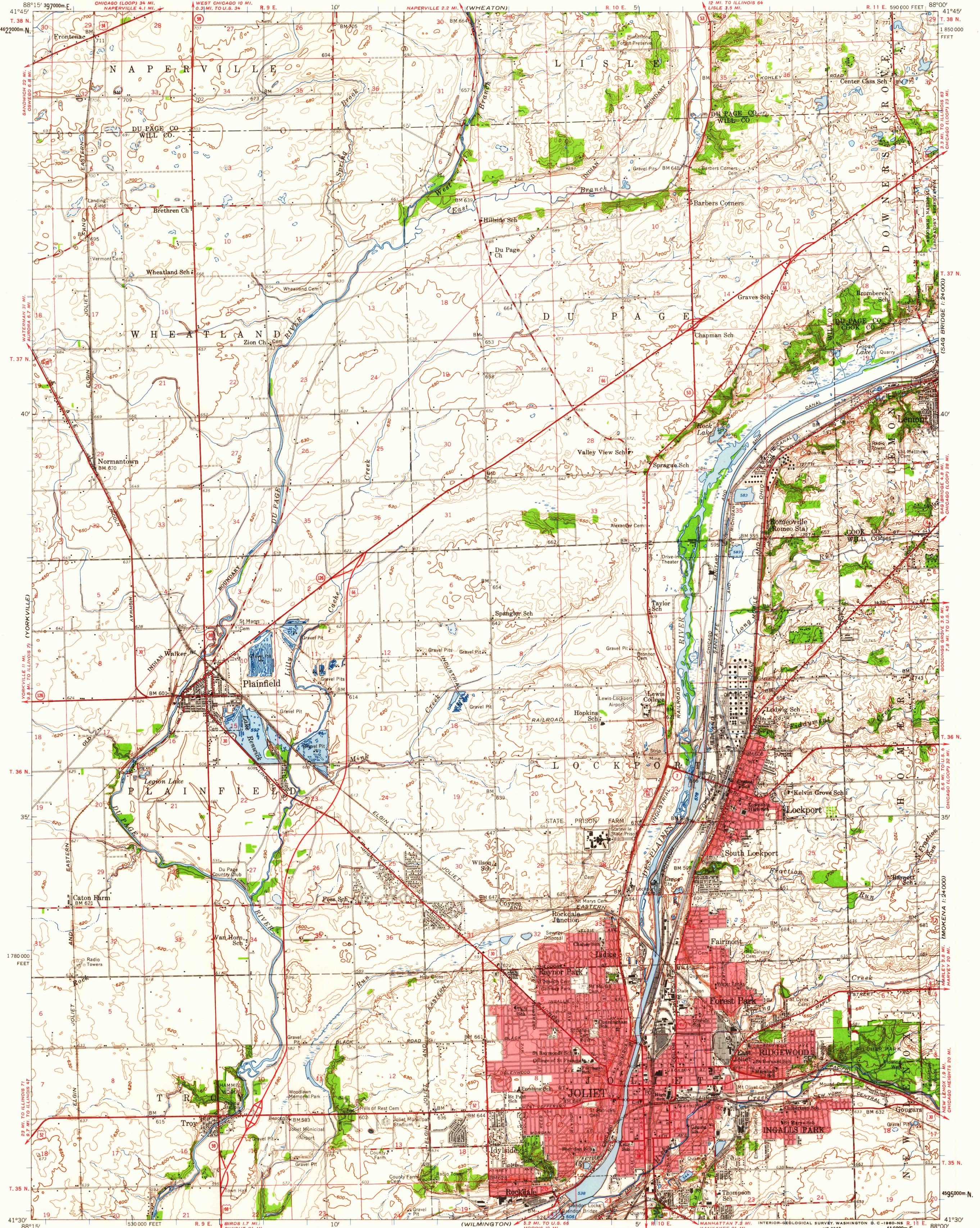


(GENEVA)

UNITED STATES  
DEPARTMENT OF THE INTERIOR  
GEOLOGICAL SURVEY

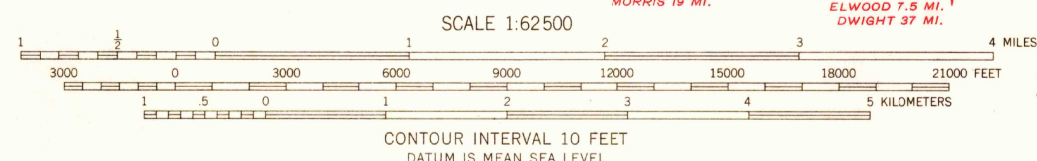
JOLIET QUADRANGLE  
ILLINOIS  
15 MINUTE SERIES (TOPOGRAPHIC)

(WINSDALE 1:24000)



Mapped, edited, and published by the Geological Survey  
Control by USGS and USC&GS  
Compiled in 1959 from 1:24,000-scale maps of Romeoville, Normantown, Plainfield, and Joliet 7.5 minute quadrangles, surveyed 1953-1954  
Topography from aerial photographs by photogrammetric methods and planimetric surveys. Aerial photographs taken 1952  
Polyconic projection. 1927 North American datum, 10,000-foot grid based on Illinois coordinate system, east zone 1000-meter Universal Transverse Mercator grid ticks, zone 16, shown in blue  
Red tint indicates areas in which only landmark buildings are shown

TRUE NORTH  
MAGNETIC NORTH  
APPROXIMATE MEAN DECLINATION, 1954



THIS MAP COMPLIES WITH NATIONAL MAP ACCURACY STANDARDS  
FOR SALE BY U. S. GEOLOGICAL SURVEY, WASHINGTON 25, D. C.  
AND BY THE STATE GEOLOGICAL SURVEY, URBANA, ILLINOIS  
A FOLDER DESCRIBING TOPOGRAPHIC MAPS AND SYMBOLS IS AVAILABLE ON REQUEST

USGS  
Historical File  
Topographic Division  
ROAD CLASSIFICATION  
Heavy-duty \_\_\_\_\_ Light-duty \_\_\_\_\_  
Medium-duty \_\_\_\_\_ Unimproved dirt \_\_\_\_\_  
U.S. Route \_\_\_\_\_ State Route \_\_\_\_\_  
U.S.G.S. FILE COPY TOPOGRAPHIC DIVISION  
JOLIET, ILL.  
N4130-W8800/15  
1954

MAY - 5 1980  
3060