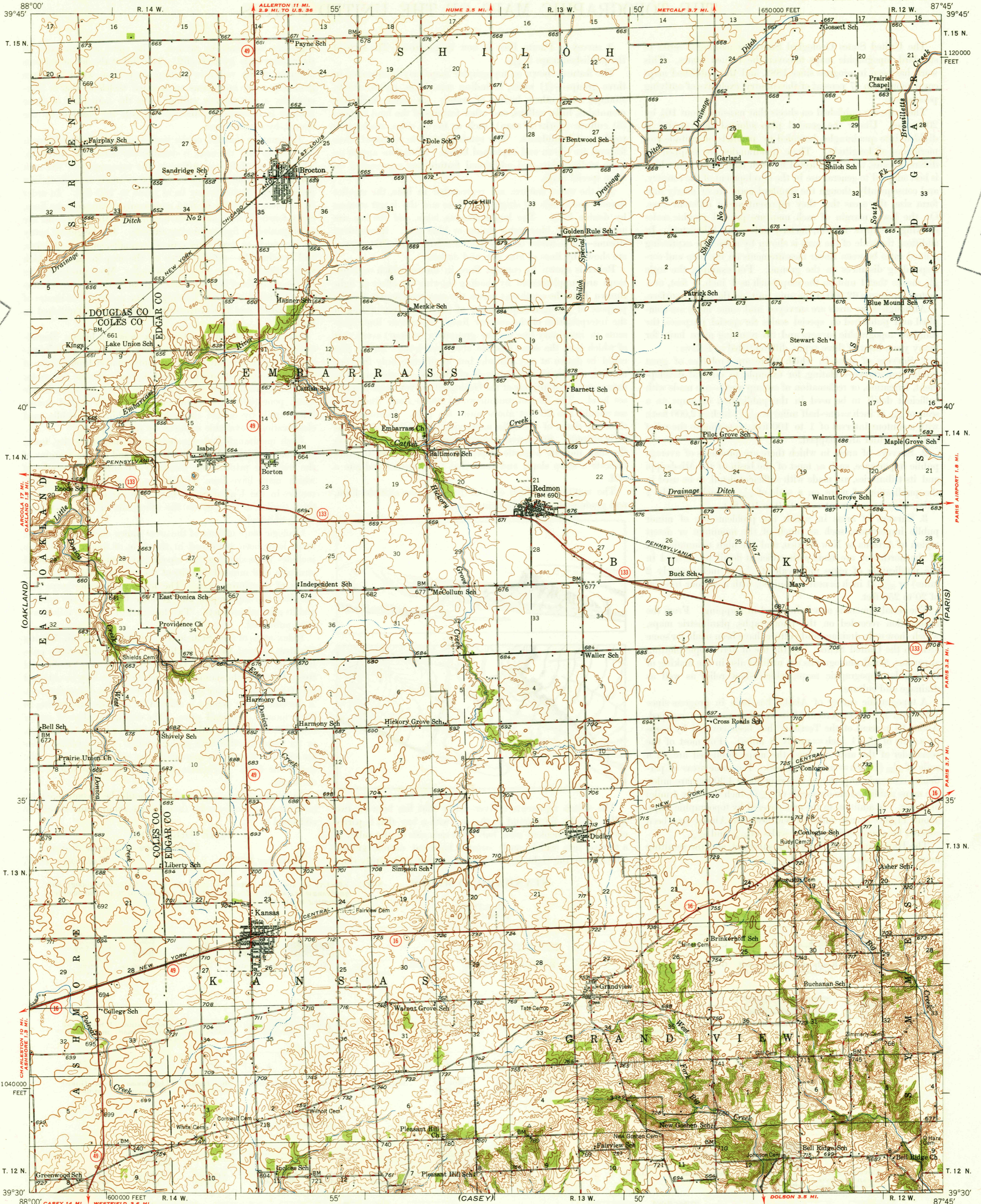


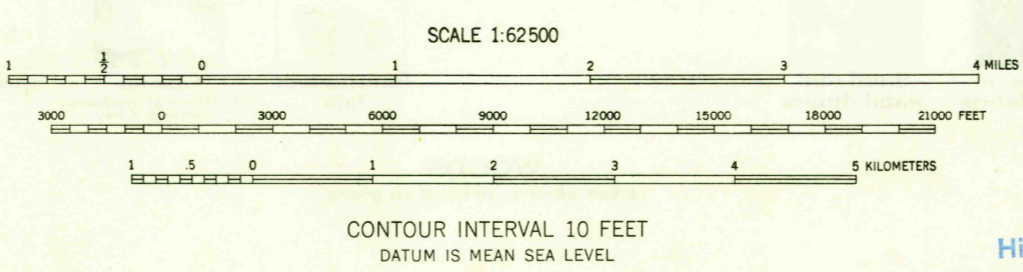
(RIDGE FARM)



U.S.G.S.
FILE COPY
Inspection and Billing

U.S.G.S.
FILE COPY
Inspection and Billing

Mapped, edited, and published by the Geological Survey
Control by USGS and USC&GS
Culture and drainage in part compiled from
aerial photographs taken 1939
Topography by plane-table methods 1946
Polyconic projection. 1927 North American datum
10,000-foot grid based on Illinois coordinate system,
east zone



ROAD CLASSIFICATION

HARD-SURFACE ALL WEATHER ROADS	DRY WEATHER ROADS
Heavy-duty - 4 LANE LANE	Improved dirt - - - - -
Medium-duty - 2 LANE LANE	Unimproved dirt - - - - -
Loose-surface, graded, or narrow hard-surface - - - - -	
U. S. Route	State Route

THIS MAP COMPLIES WITH NATIONAL MAP ACCURACY STANDARDS
FOR SALE BY U. S. GEOLOGICAL SURVEY, WASHINGTON 25, D. C.
AND BY THE STATE GEOLOGICAL SURVEY, URBANA, ILLINOIS

U.S.G.S.
FILE COPY
Inspection and Billing

KANSAS, ILL.
N3930-W8745/15
PRINTED 1949

MAY 1 1949 3185