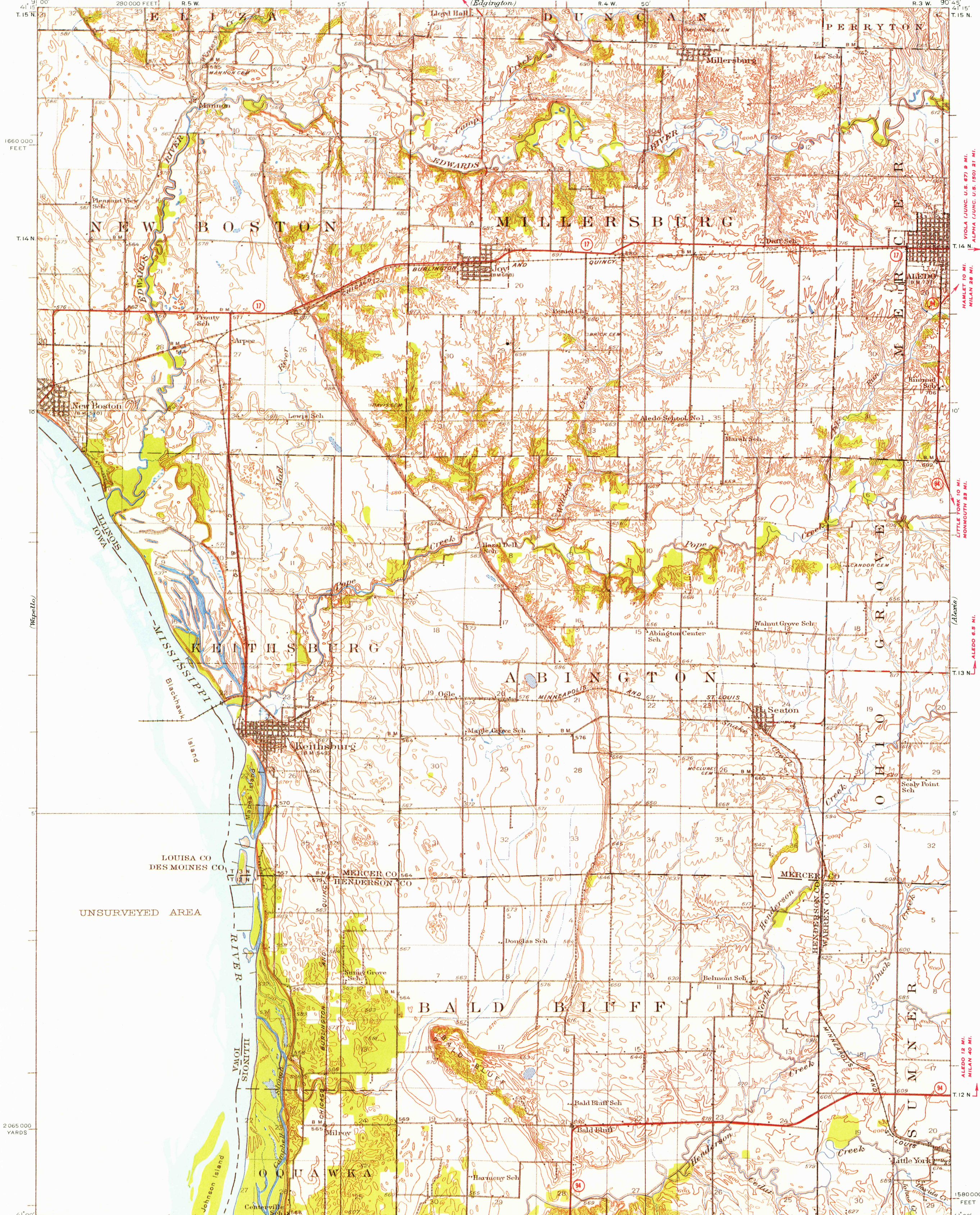


UNITED STATES
DEPARTMENT OF THE INTERIOR
GEOLOGICAL SURVEY

10 MI. TO ILL. 92
BUFFALO PRAIRIE 7.5 MI.

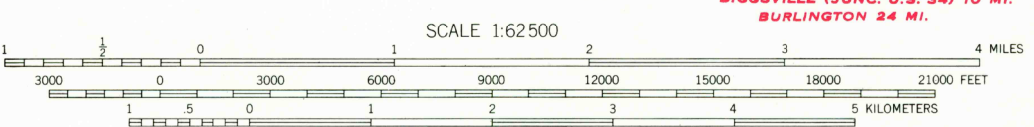
STATE OF ILLINOIS
DEPARTMENT OF REGISTRATION AND EDUCATION
GEOLOGICAL SURVEY DIVISION, URBANA, ILLINOIS

ILLINOIS - IOWA
KEITHSBURG QUADRANGLE



Topography by J.A. Duck, H.E. Simmons, Gilbert Young,
A.T. Munson, W.A. Tingey, and M.C. Waterman
Culture and drainage in part compiled from aerial photographs
taken by Air Corps, U.S. Army
Surveyed in 1921, 1931, 1934, and 1935

APPROXIMATE MEAN
DECLINATION, 1935



Contour intervals 10 and 20 feet
changing on the 580 foot contour
Datum is mean sea level

ROAD CLASSIFICATION
Heavy duty ——— 4 LANE 6 LANE Light duty ———
Medium duty ——— 4 LANE 6 LANE Unimproved dirt ———
U.S. Route ——— State Route ———

Keithsburg, ILL.-IOWA
N4100-W9045/15
1935

FOR SALE BY U.S. GEOLOGICAL SURVEY, FEDERAL CENTER, DENVER, COLORADO OR WASHINGTON 25, D.C.
AND BY THE STATE GEOLOGICAL SURVEY, URBANA, ILLINOIS
A FOLDER DESCRIBING TOPOGRAPHIC MAPS AND SYMBOLS IS AVAILABLE ON REQUEST

This map was reproduced by electronic color scanning of an earlier printing (1954).

Historical File
Topographic Division

1700
JUN 10 1977