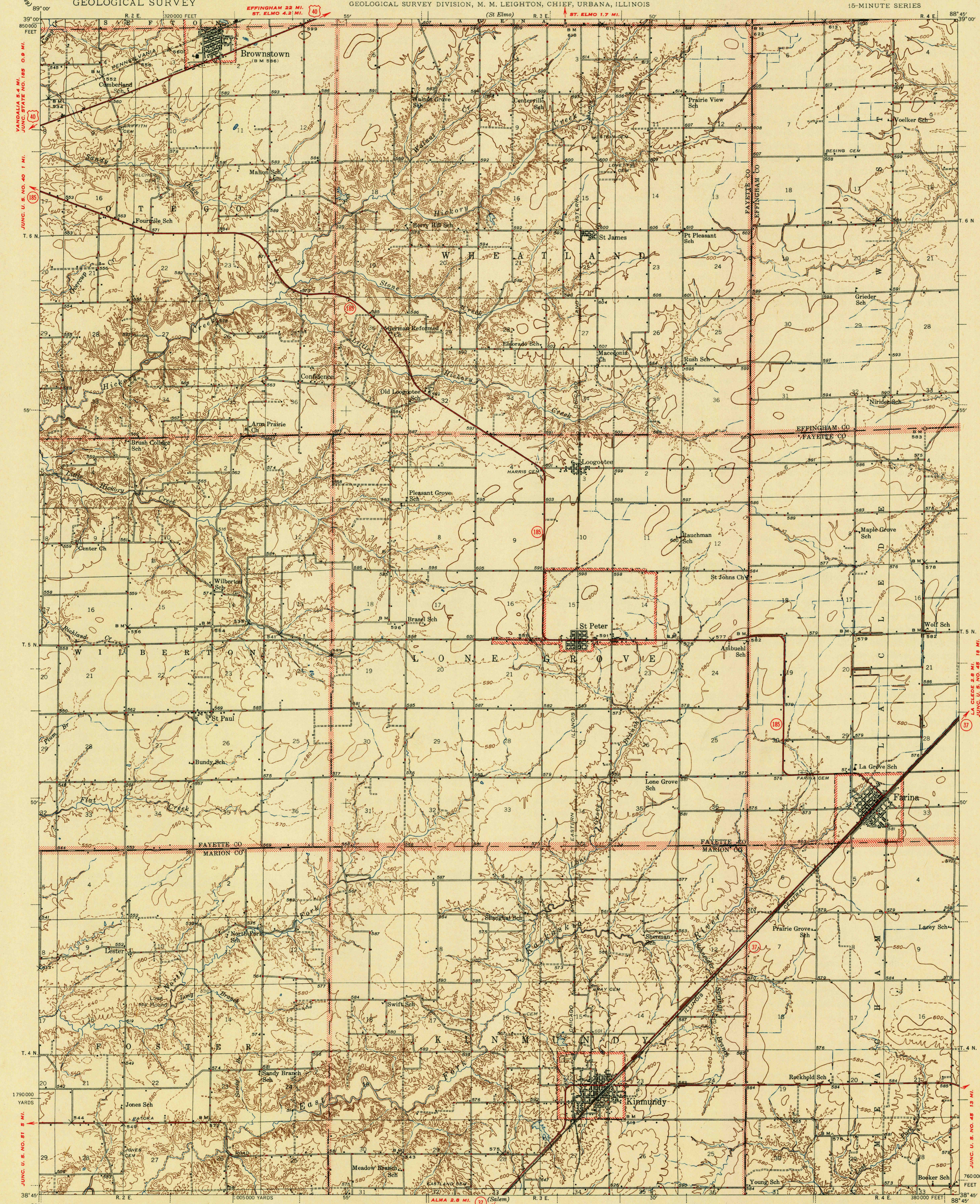


UNITED STATES
DEPARTMENT OF THE INTERIOR
GEOLOGICAL SURVEY

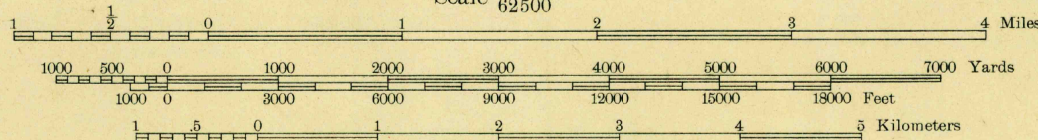
STATE OF ILLINOIS
DWIGHT H. GREEN, GOVERNOR
DEPARTMENT OF REGISTRATION AND EDUCATION
FRANK G. THOMPSON, DIRECTOR
GEOLOGICAL SURVEY DIVISION, M. M. LEIGHTON, CHIEF, URBANA, ILLINOIS

ILLINOIS
KINMUNDY QUADRANGLE
15-MINUTE SERIES



Mapped by the Geological Survey
1945

ROAD CLASSIFICATION
1947
Dependable hard-surface
heavy-duty road
Secondary hard-surface
all-weather road
Dirt road
Dry weather roads
Loose-surface graded
Unsurfaced, graded
State Route
U. S. Route
APPROXIMATE MEAN
DECLINATION, 1945



Contour interval 20 feet
10 foot contours added in dashed lines
Datum is mean sea level

Polyconic projection. 1927 North American datum
5000 yard grid based on U. S. zone system, C
10000 foot grid based on Illinois (East)
rectangular coordinate system

KINMUNDY, ILL.
Edition of 1947

N 3845-W 8845/15

USGS Library
Reston, VA.
Topo Archive