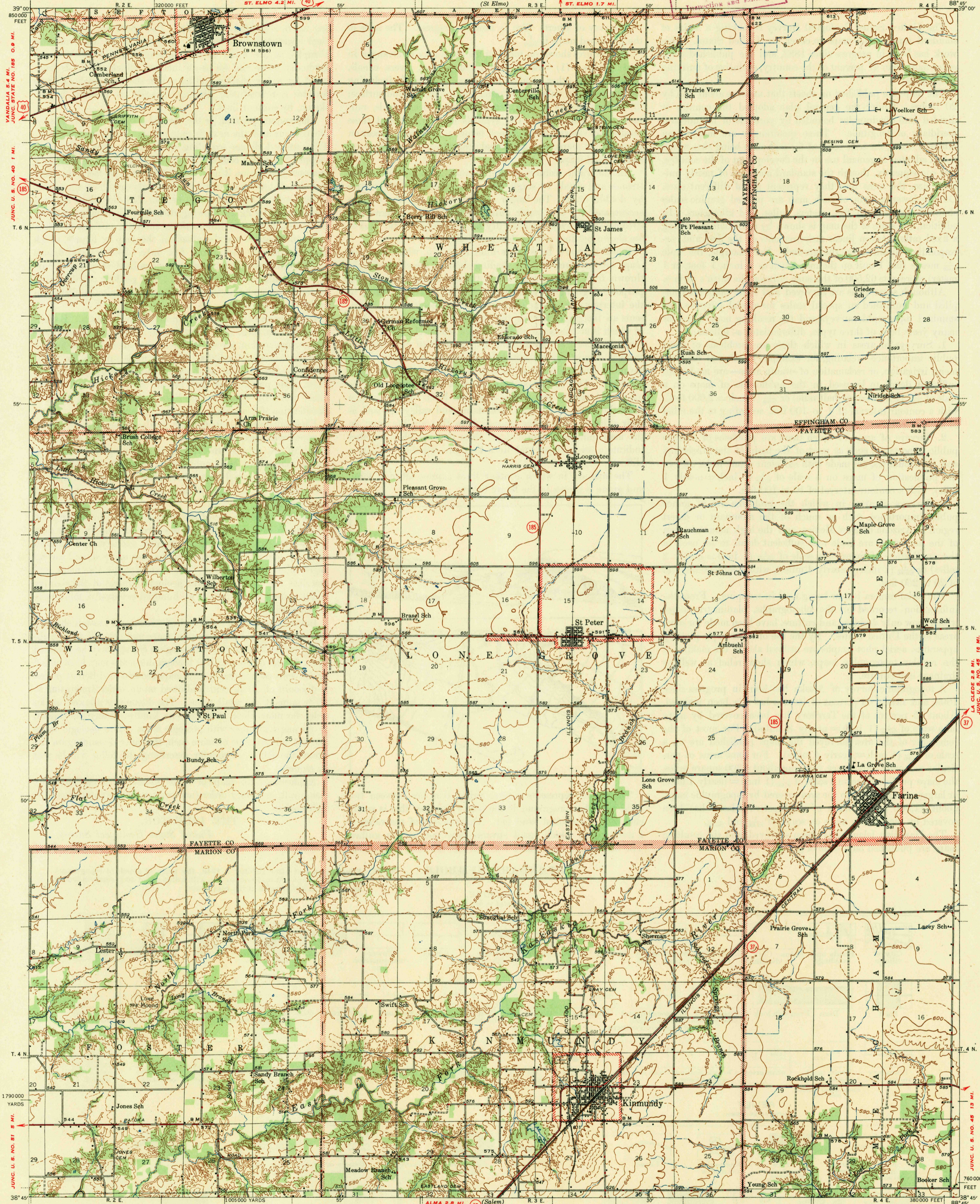


U. S. G. S.  
FILE COPY  
Inspection and Editing.



U. S. G. S.  
FILE COPY  
Inspection and Editing.

Mapped by the Geological Survey  
1945

ROAD CLASSIFICATION  
1947

Dependable hard surface  
Heavy-duty road  
Secondary hard surface  
all weather road

Dry weather roads  
Loose-surface graded  
Unsurfaced graded  
Dirt road

U. S. Route 185  
State Route 40  
State Route 18  
State Route 37  
State Route 31

APPROXIMATE MEAN  
DECLINATION, 1945

TRUE NORTH  
MAGNETIC NORTH

More than two lines indicated along road with tick at point of change. LANE, 4 LANE

Scale 62500

1000 2000 3000 4000 5000 6000 7000 Yards

1000 2000 3000 4000 5000 6000 7000 Feet

1 2 3 4 5 Kilometers

Contour interval 20 feet  
10 foot contours added in dashed lines  
Datum is mean sea level

USGS  
Historical File  
Topographic Division

U. S. G. S.  
FILE COPY  
Inspection and Editing.

Polyconic projection. 1927 North American datum  
5000 yard grid based on U. S. zone system, C  
10000 foot grid based on Illinois (East)  
rectangular coordinate system

KINMUNDY, ILL.  
Edition of 1947  
N3845-W8845/15