

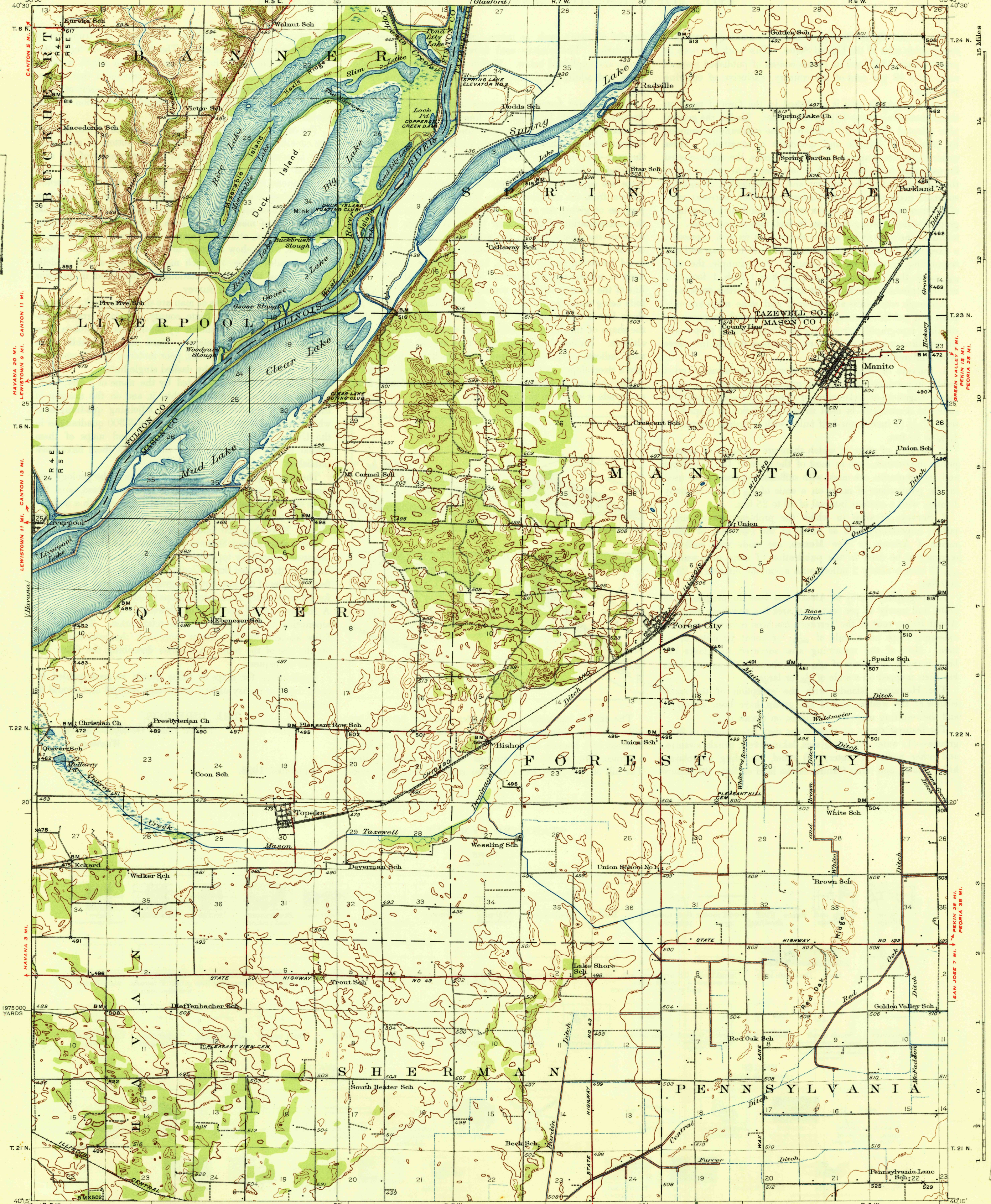
U. S. G. S.
FILE COPY
Inspection and Editing

STATE OF ILLINOIS
DEPARTMENT OF REGISTRATION AND EDUCATION
M. F. WALSH, DIRECTOR
M. M. LEIGHTON, CHIEF, URBANA ILLINOIS
(Glasford)

DEPARTMENT OF THE INTERIOR
U. S. GEOLOGICAL SURVEY

CANTON 9 MI. PEORIA 25 MI.
BANNER 2 MI. GEOLOGICAL SURVEY DIVISION, M. M. LEIGHTON, CHIEF, URBANA ILLINOIS

ILLINOIS
MANITO QUADRANGLE
R. 6 W. T. 24 N.

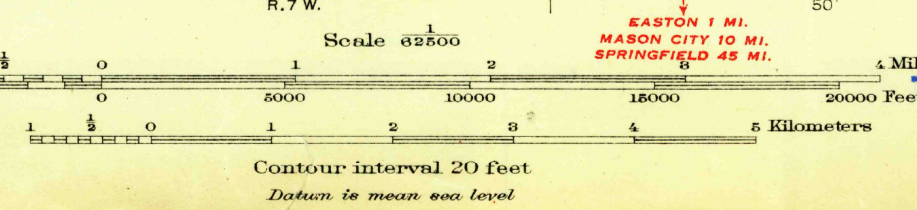


U. S. G. S.
FILE COPY
Inspection and Editing

U. S. G. S.
FILE COPY
Inspection and Editing

Topography by H.E. Simmons, W.S. Gehres,
W.S. Beames, W.E. Baird, Daniel Kennedy, W.S. Bailey, and
H.S. Rice
Illinois River by Corps of Engineers, U.S. Army
Control by U.S. Geological Survey and
Corps of Engineers, U.S. Army
Surveyed in 1924, 1927, and 1929

U. S. G. S.
FILE COPY
Inspection and Editing



USGS
Historical File
Topographic Division

Polyconic projection, North American datum
5000 yard grid based upon U.S. zone system, C
HARD IMPROVISED SURFACE ROADS
OTHER MAIN TRAVELED ROADS
1931

JUN 17 1962 (3690)
MANITO, ILL.
Edition of 1932