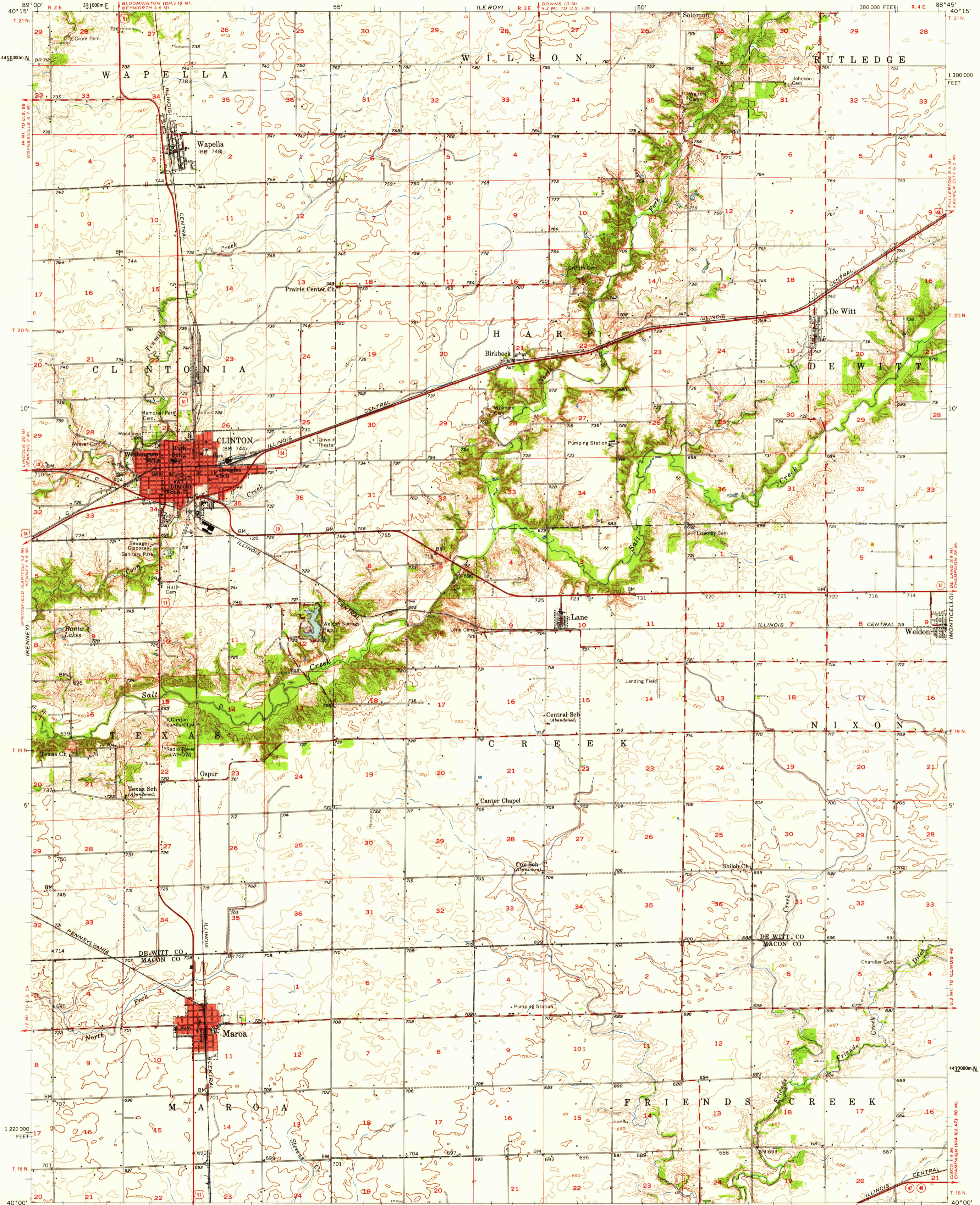


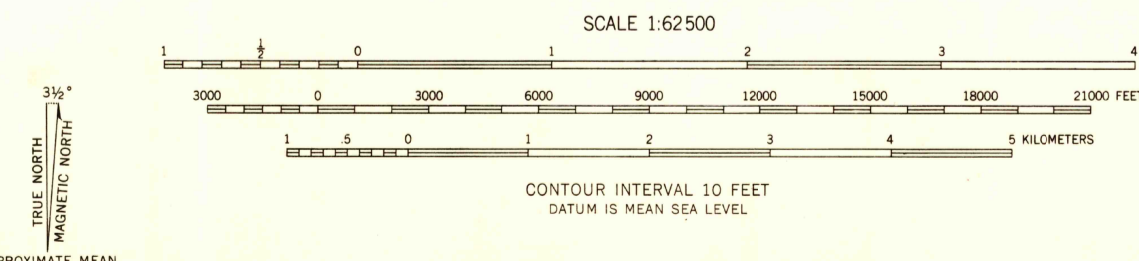
STATE OF ILLINOIS
 WILLIAM G. STRATTON, GOVERNOR
 DEPARTMENT OF REGISTRATION AND EDUCATION
 VERA M. BINKS, DIRECTOR
 GEOLOGICAL SURVEY DIVISION, JOHN C. FRYE, CHIEF
 URBANA, ILLINOIS

MAROA QUADRANGLE
 ILLINOIS
 15 MINUTE SERIES (TOPOGRAPHIC)

UNITED STATES
 DEPARTMENT OF THE INTERIOR
 GEOLOGICAL SURVEY



Mapped, edited, and published by the Geological Survey
 Control by USGS and USC&GS
 Topography from aerial photographs by Kelsh plotter
 and by planetable surveys 1956-1957. Aerial photographs taken 1956
 Polyconic projection. 1927 North American datum
 10,000-foot grid based on Illinois coordinate system, east zone
 1000-meter Universal Transverse Mercator grid ticks,
 zone 16, shown in blue
 Red tint indicates areas in which only
 landmark buildings are shown



USGS
 Historical File
 Topographic Division
 ROAD CLASSIFICATION
 Heavy-duty ——— Light-duty ———
 Medium-duty ——— Unimproved dirt - - - - -
 U. S. Route State Route



U.S.G.S.
FILE COPY
 TOPOGRAPHIC DIVISION
 MAROA, ILL.
 N4000—W8845/15
 1957

THIS MAP COMPLIES WITH NATIONAL MAP ACCURACY STANDARDS
 FOR SALE BY U. S. GEOLOGICAL SURVEY, WASHINGTON 25, D. C.
 AND BY THE STATE GEOLOGICAL SURVEY, URBANA, ILLINOIS
 A FOLDER DESCRIBING TOPOGRAPHIC MAPS AND SYMBOLS IS AVAILABLE ON REQUEST

JUL 28 1956
 2845