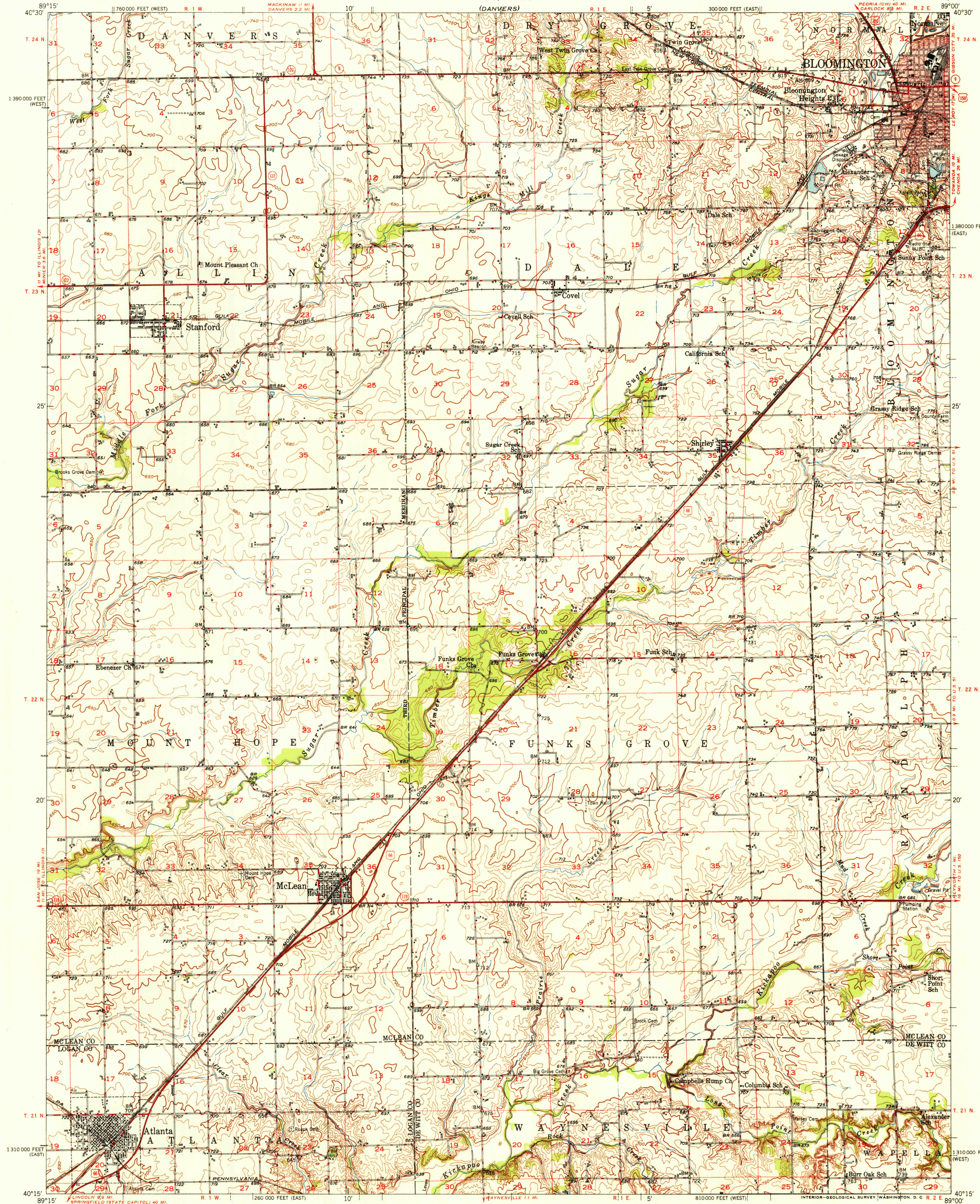


UNITED STATES
DEPARTMENT OF THE INTERIOR
GEOLOGICAL SURVEY

U. S. G. S.
FILE COPY
Inspection and Editing

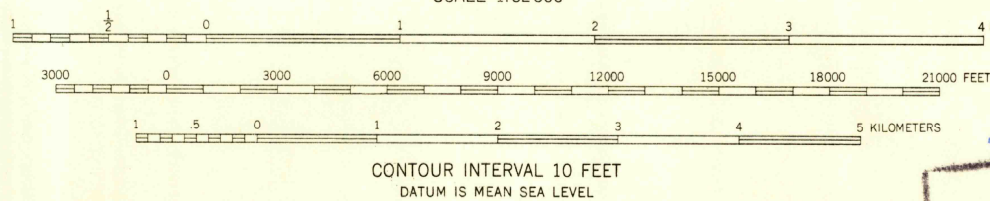
STATE OF ILLINOIS
ADLAI E. STEVENSON, GOVERNOR
DEPARTMENT OF REGISTRATION AND EDUCATION
NOBLE J. PUFFER, DIRECTOR
GEOLOGICAL SURVEY DIVISION, M. M. LEIGHTON, CHIEF
URBANA, ILLINOIS

MCLEAN QUADRANGLE
ILLINOIS
15 MINUTE SERIES (TOPOGRAPHIC)



Control by USGS and USC&GS
Culture and drainage in part compiled from
aerial photographs taken 1940-1941
Topography by plane-table methods 1926, 1930, 1945, and 1949
Polyconic projection, 1927 North American datum
10,000-foot grids based on Illinois coordinate system,
east and west zones
Red tint indicates area in which only
landmark buildings are shown

TRUE NORTH
MAGNETIC NORTH
APPROXIMATE MEAN
DECLINATION, 1949



THIS MAP COMPLIES WITH NATIONAL MAP ACCURACY STANDARDS
FOR SALE BY U. S. GEOLOGICAL SURVEY, WASHINGTON 25, D. C.
AND BY THE STATE GEOLOGICAL SURVEY, URBANA, ILLINOIS
A FOLDER DESCRIBING TOPOGRAPHIC MAPS AND SYMBOLS IS AVAILABLE ON REQUEST

USGS
Historical File
Topographic Division
U. S. G. S.
FILE COPY
Inspection and Editing

ROAD CLASSIFICATION
HARD-SURFACE ALL WEATHER ROADS DRY WEATHER ROADS
Heavy-duty ———— LANE 6 LANE Improved dirt ————
Medium-duty ———— LANE 6 LANE Unimproved dirt ————
Loose-surface, graded, or narrow hard-surface ————
U. S. Route State Route

MCLEAN, ILL.
N4015-W8900/15

EDITION OF 1951

3220

APR 12 1951