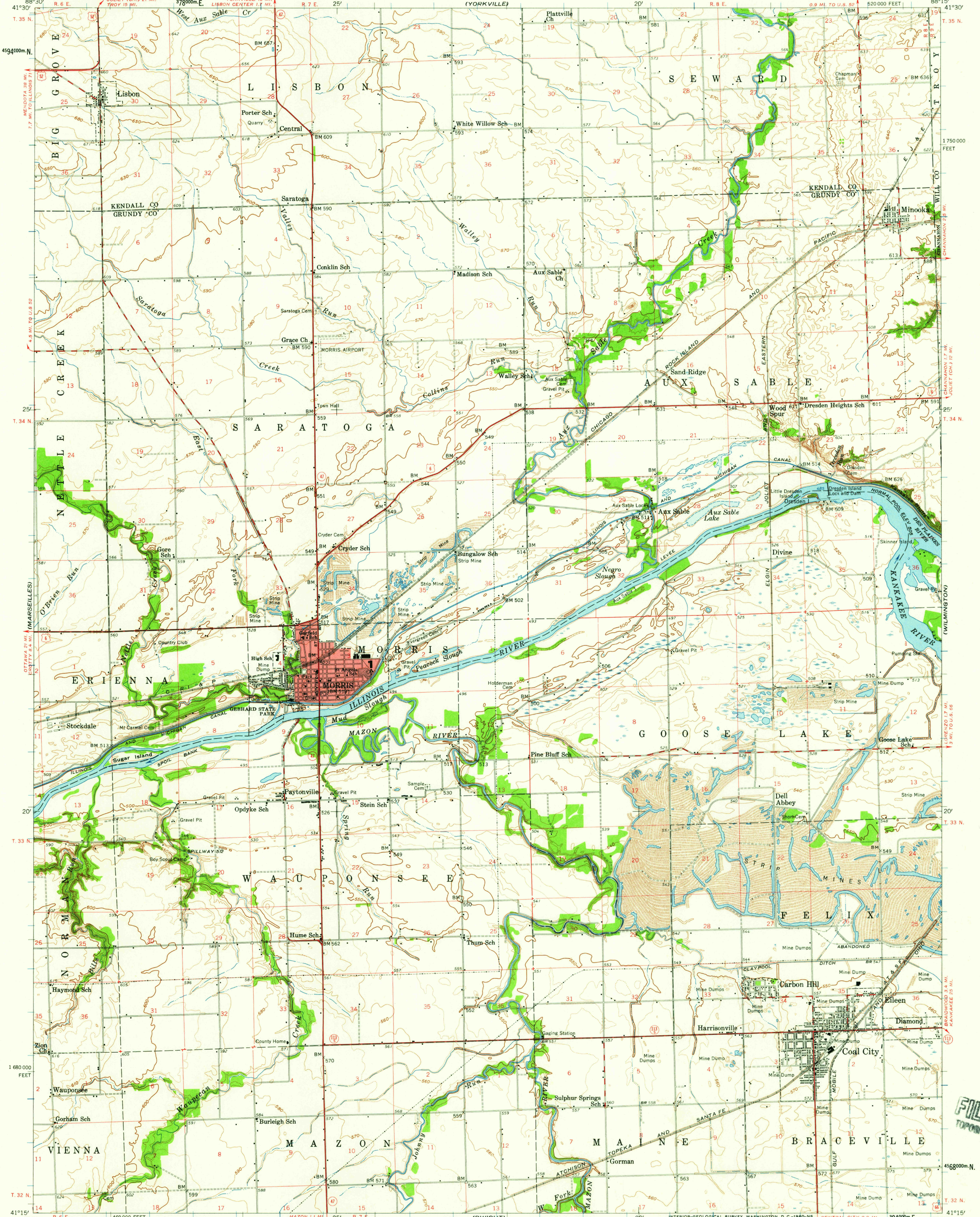


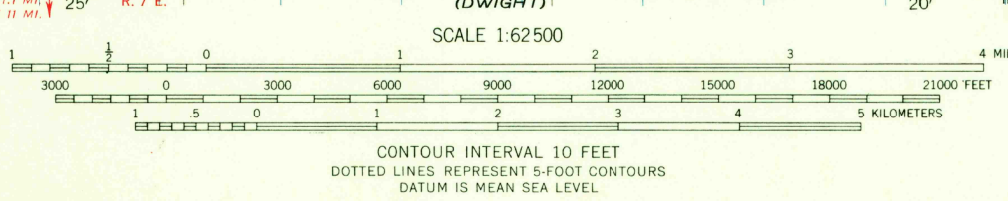
UNITED STATES
DEPARTMENT OF THE INTERIOR
GEOLOGICAL SURVEY

MORRIS QUADRANGLE
ILLINOIS
15 MINUTE SERIES (TOPOGRAPHIC)



Mapped, edited, and published by the Geological Survey
Control by USGS, USC&GS, and USCE
Compiled in 1959 from 1:24 000-scale maps of Minooka,
Lisbon, Morris, and Coal City 7.5 minute
quadrangles, surveyed 1953-1954
Culture and drainage in part compiled from aerial photographs
taken 1952. Topography by planetable surveys
Polyconic projection, 1927 North American datum
10,000-foot grid based on Illinois coordinate system, east zone
1000-meter Universal Transverse Mercator grid ticks,
zone 16, shown in blue
Red tint indicates area in which only
landmark buildings are shown

TRUE NORTH
MAGNETIC NORTH
APPROXIMATE MEAN
DECLINATION, 1954



USGS
Historical File
Topographic Division

ROAD CLASSIFICATION
Heavy-duty ——— Light-duty ———
Medium-duty ——— Unimproved dirt - - - - -
U.S. Route ——— State Route ———



This area also covered by 1:24 000-scale maps of
Minooka 1954, Lisbon 1953, Morris 1953,
and Coal City 1953 7.5 minute quadrangles
MORRIS, ILL.
N4115-W8815/15
1954

THIS MAP COMPLIES WITH NATIONAL MAP ACCURACY STANDARDS
FOR SALE BY U.S. GEOLOGICAL SURVEY, WASHINGTON 25, D. C.
AND BY THE STATE GEOLOGICAL SURVEY, URBANA, ILLINOIS
A FOLDER DESCRIBING TOPOGRAPHIC MAPS AND SYMBOLS IS AVAILABLE ON REQUEST

U.S.G.S.
FILE COPY
TOPOGRAPHIC DIVISION

MAR 16 1960

2540