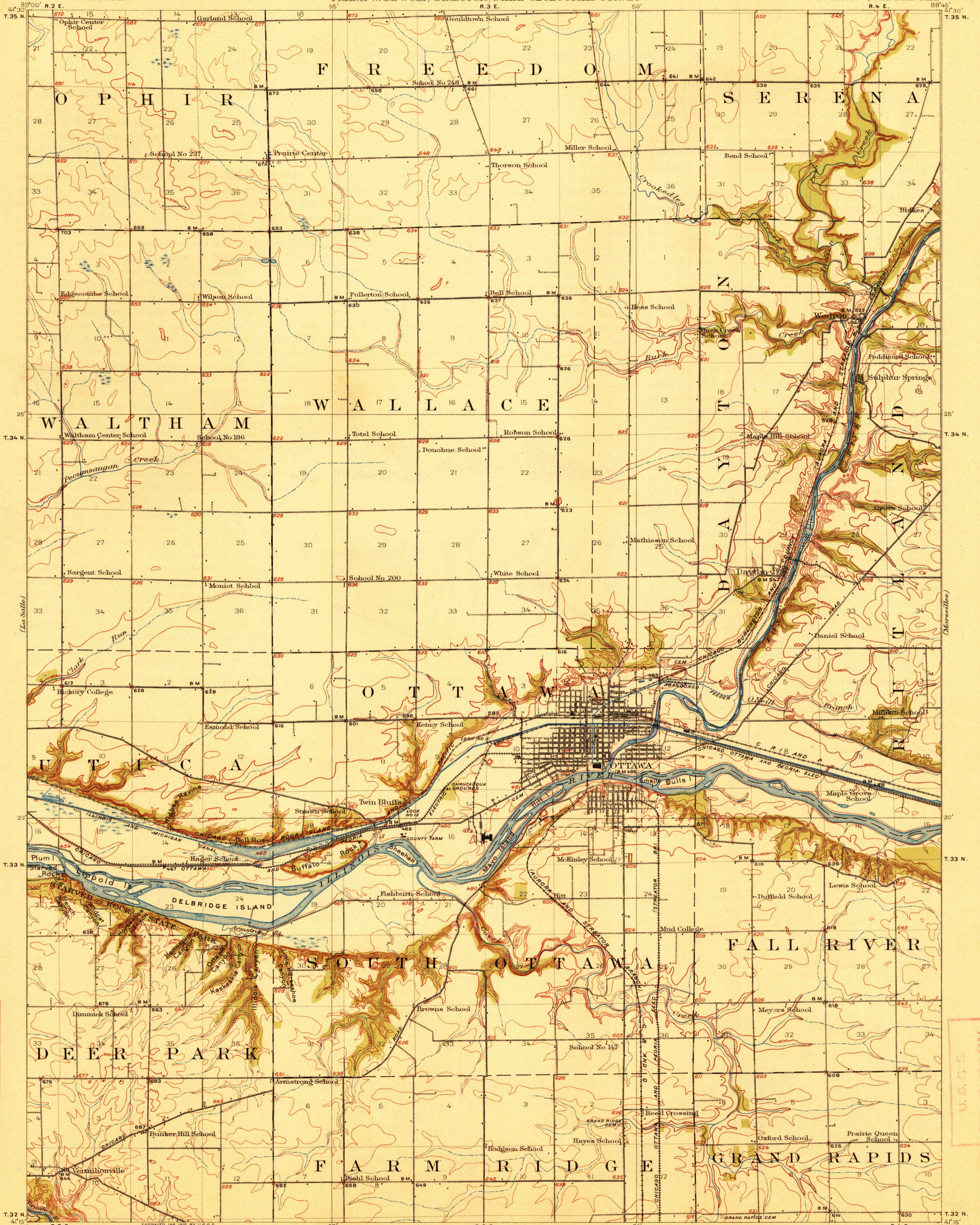


TOPOGRAPHY

U.S. GEOLOGICAL SURVEY
GEORGE OTIS SMITH
DIRECTOR

STATE OF ILLINOIS
GOVERNOR C. S. DENEEN, T. C. CHAMBERLIN, E. J. JAMES, COMMISSIONERS
FRANK W. DE WOLF, DIRECTOR, STATE GEOLOGICAL SURVEY

ILLINOIS
(LASALLE COUNTY)
OTTAWA QUADRANGLE



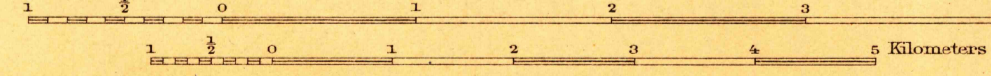
U.S.G.S.
FILE COPY
Ed. Div. Topographic Maps.

U.S.G.S.
FILE COPY
Ed. Div. Topographic Maps.

ENGRAVED JAN. 1915 BY U.S.G.S.

Williams
Lee

Scale 62500



Contour interval 20 feet.

Datum is mean sea level.

USGS
Historical File
Topographic Division

Edition of May 1915.

JUN 30 1915 3493

OTTAWA, ILL.

SURVEYED IN COOPERATION WITH THE STATE OF ILLINOIS.

APPROXIMATE MEAN DECLINATION 1911.