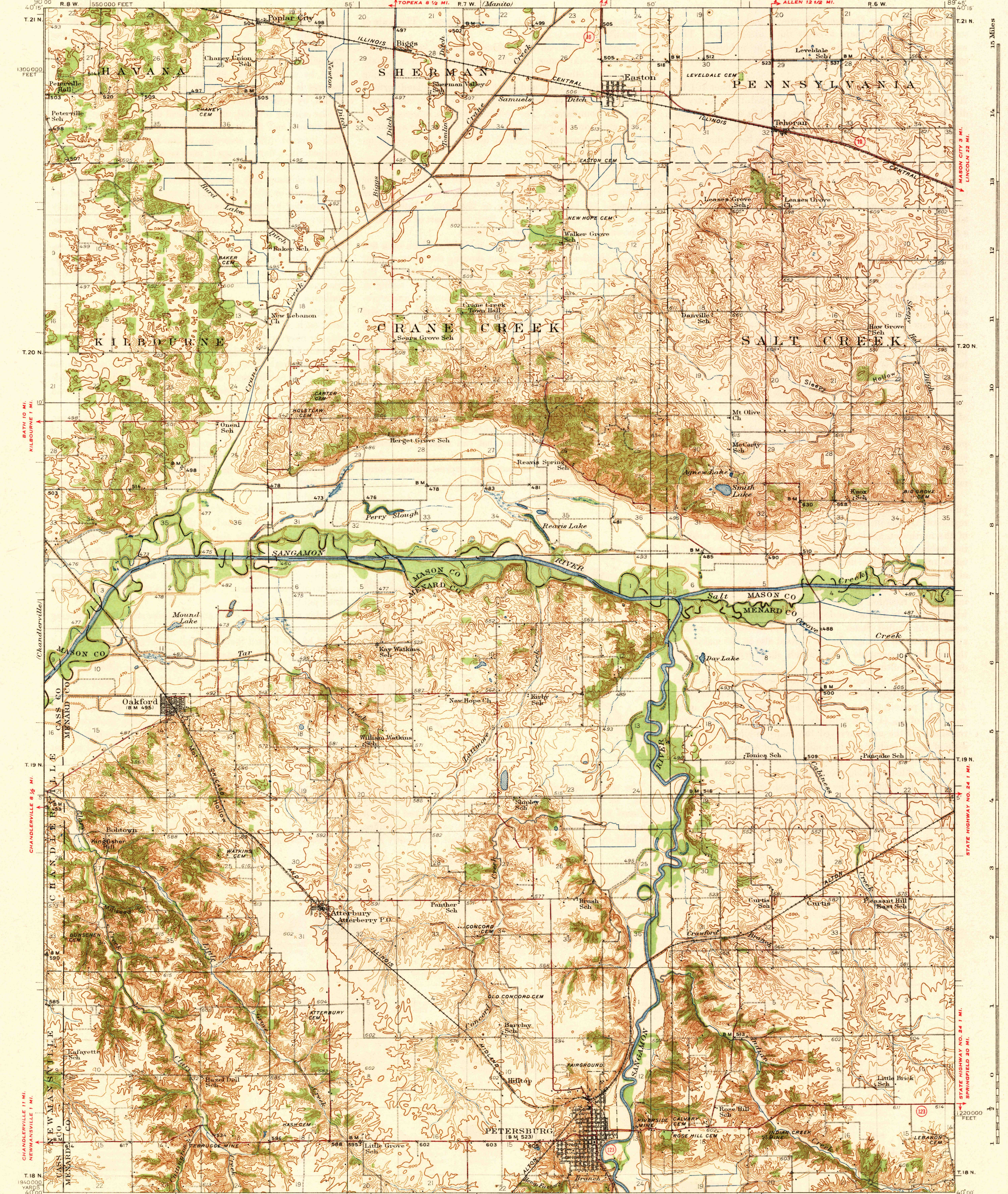


FILE COPY
Inspection and Editing.



Topography by F.A. Danforth, J.A. Duck, W.E. Baird,
A.T. Munson, F.W. Cook, and A.W. Plusnick
Culture and drainage in part compiled from aerial photographs
taken by Air Corps, U.S. Army
Surveyed in 1922, 1928, and 1933

Scale 1:25,000
1 inch = 2000 feet
1 centimeter = 250 meters

USGS
Historic File
Topographic Division
60,000 FEET R.G.W.
Polyconic projection North American datum
5000 yard grid based on U.S. zone system C
10,000 foot grid based on Illinois (West)
rectangular coordinate system