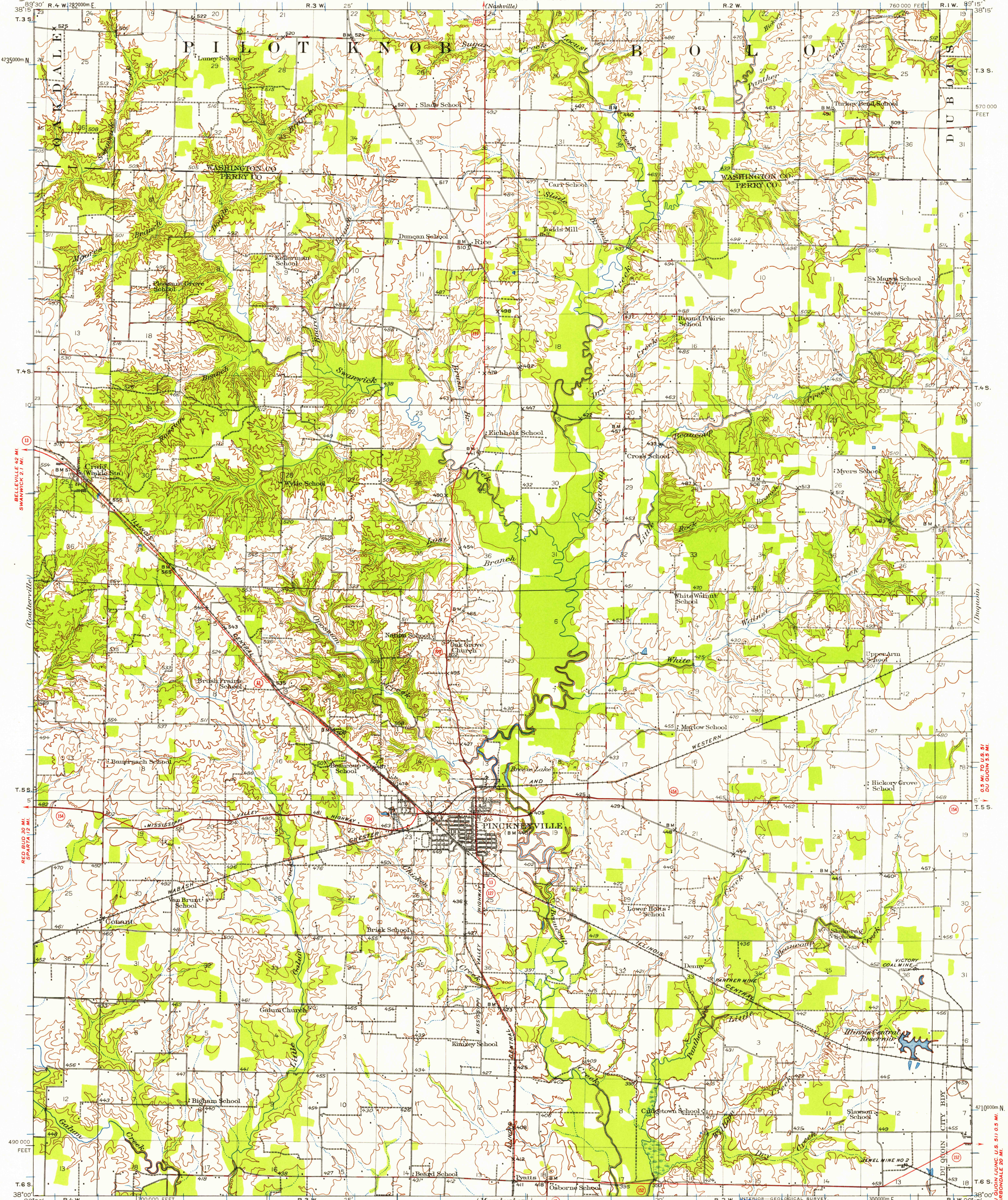


UNITED STATES  
DEPARTMENT OF THE INTERIOR  
GEOLOGICAL SURVEY

STATE OF ILLINOIS  
DEPARTMENT OF REGISTRATION AND EDUCATION  
GEOLOGICAL SURVEY DIVISION

PINCKNEYVILLE QUADRANGLE



Topography by F.A. Danforth, E.V. Perkinson, J.M. Rawls, H.E. Simmons, S.E. Clement, C. Dickey, and O.C. Cope. Surveyed in 1921 and 1924.

ROAD CLASSIFICATION  
Heavy-duty ——— Light-duty ———  
Medium-duty ——— Unimproved dirt ———  
U. S. Route      State Route

SCALE 1:62,500  
CONTOUR INTERVAL 20 FEET  
DATUM IS MEAN SEA LEVEL  
APPROXIMATE MEAN DECLINATION, 1924

FOR SALE BY U.S. GEOLOGICAL SURVEY, WASHINGTON 25, D. C.  
AND BY THE STATE GEOLOGICAL SURVEY, URBANA, ILLINOIS  
A FOLDER DESCRIBING TOPOGRAPHIC MAPS AND SYMBOLS IS AVAILABLE ON REQUEST

Historical File  
Topographic Division

Polyconic projection, 1927 North American datum  
10,000-foot grids based on Illinois (West)  
rectangular coordinate system  
1000-meter Universal Transverse Mercator grid ticks,  
zone 16, shown in blue

U.S.G.S.  
FILE COPY  
TOPOGRAPHIC DIVISION

PINCKNEYVILLE, ILL.  
N 3800—W 8915/15  
1924

FEB 25 1958  
1445