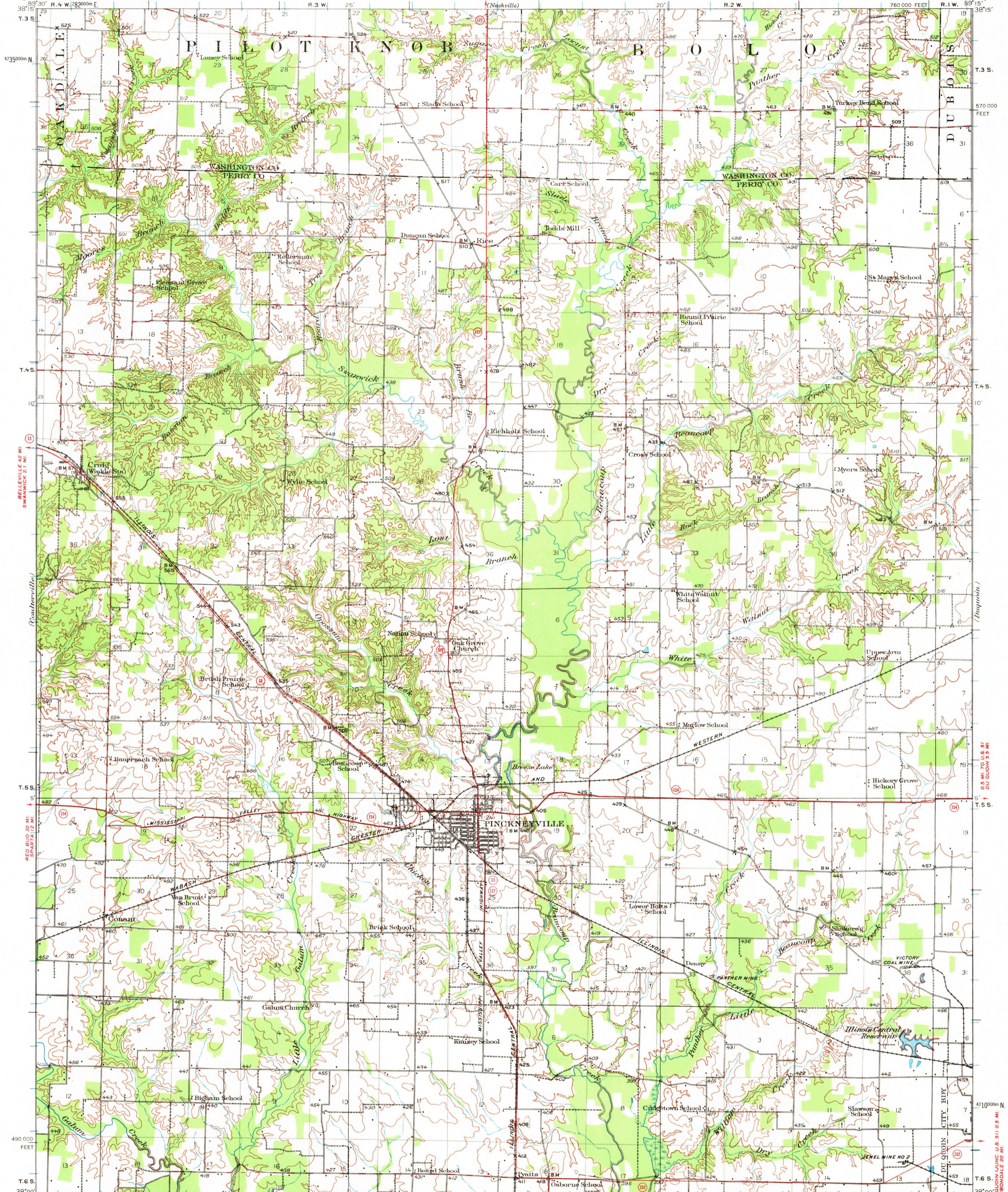


UNITED STATES  
DEPARTMENT OF THE INTERIOR  
GEOLOGICAL SURVEY

STATE OF ILLINOIS  
DEPARTMENT OF REGISTRATION AND EDUCATION  
GEOLOGICAL SURVEY DIVISION

PINCKNEYVILLE QUADRANGLE

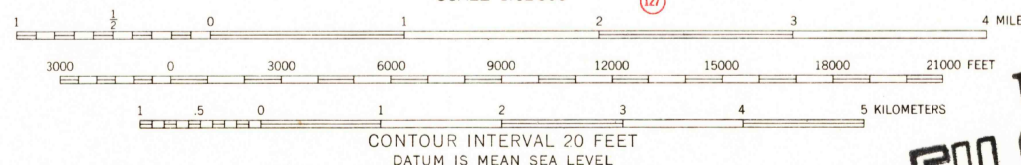


Topography by F.A. Danforth, E.V. Perkinson, J.M. Rawls,  
H.E. Simmons, S.E. Clement, C. Dickey, and O.C. Cope  
Surveyed in 1921 and 1924

ROAD CLASSIFICATION

Heavy-duty ——— Light-duty ———  
Medium-duty ——— Unimproved dirt ———  
U.S. Route ——— State Route ———

APPROXIMATE MEAN  
MAGNETIC DECLINATION, 1924



U.S.G.S.  
PINCKNEYVILLE QUADRANGLE  
TOPOGRAPHIC DIVISION

Polyconic projection - 1927 North American datum  
10,000-foot grids based on Illinois (West)  
rectangular coordinate system  
1000-meter Universal Transverse Mercator grid ticks,  
zone 16, shown in blue

PINCKNEYVILLE, ILL.  
N 3800 - W 8915 / 15  
1924  
Historical File  
Topographic Division

OCT 15 1969