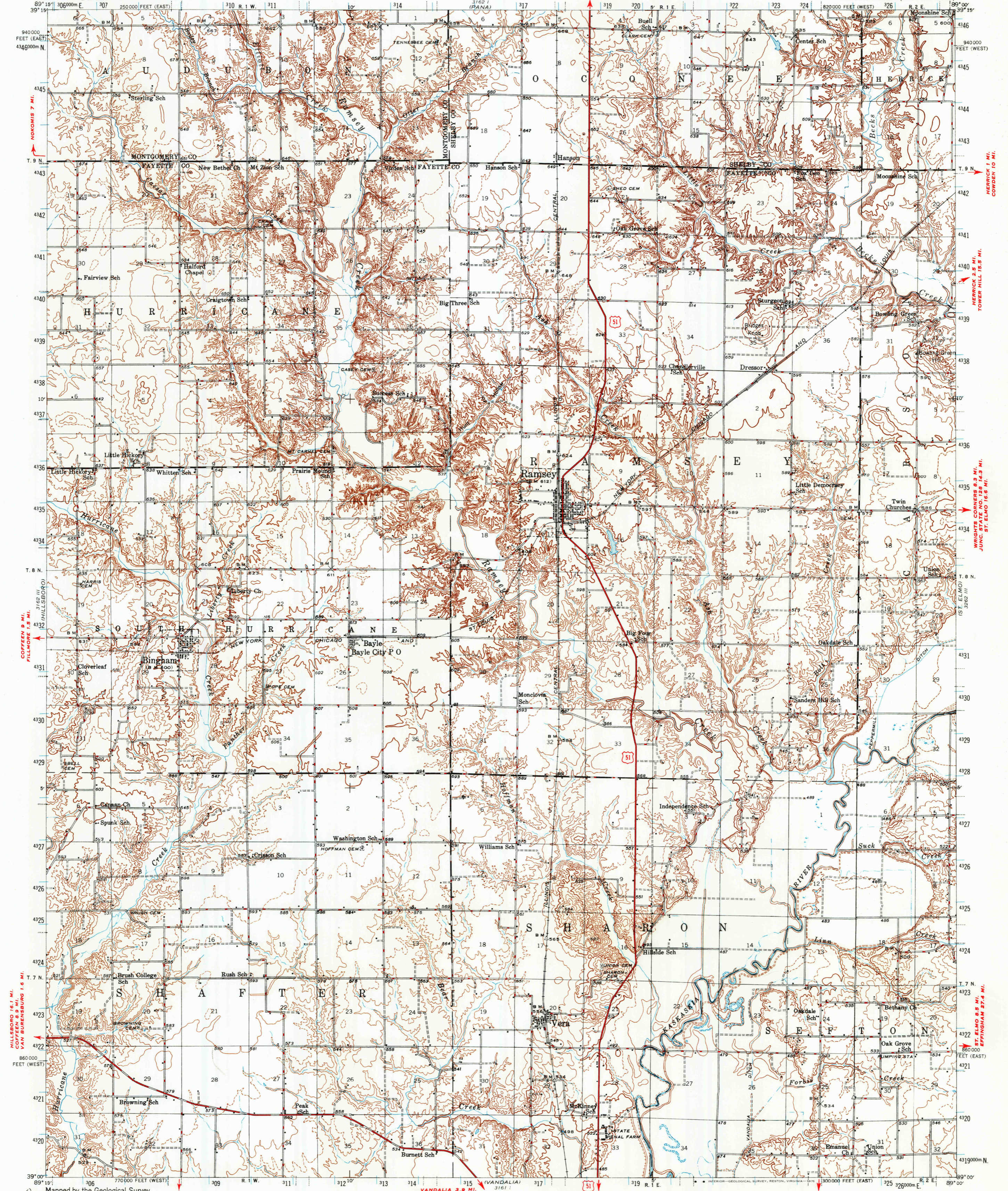


UNITED STATES
DEPARTMENT OF THE INTERIOR
GEOLOGICAL SURVEY

STATE OF ILLINOIS
DEPARTMENT OF REGISTRATION AND EDUCATION
GEOLOGICAL SURVEY DIVISION
URBANA, ILLINOIS

RAMSEY QUADRANGLE
ILLINOIS
15 MINUTE SERIES (TOPOGRAPHIC)



Mapped by the Geological Survey
1922 and 1942-1944

SCALE 1:62,500
CONTOUR INTERVAL 20 FEET
DASHED LINES REPRESENT 10 FOOT CONTOURS
NATIONAL GEODETIC VERTICAL DATUM OF 1929

BLUFF CITY 2.6 MI.
Projection: Illinois coordinate system, west zone
(Universal Transverse Mercator)
10,000-foot grid ticks based on Illinois coordinate
system, west and east zones.
1000-metre Universal Transverse Mercator grid ticks,
zone 16, shown in blue. 1927 North American datum

RAMSEY, ILL.
N3900—W8900/15

1944

AMS 3162 II—SERIES V763

FOR SALE BY U. S. GEOLOGICAL SURVEY, RESTON, VIRGINIA 22092
AND STATE GEOLOGICAL SURVEY, URBANA, ILLINOIS 61801
A FOLDER DESCRIBING TOPOGRAPHIC MAPS AND SYMBOLS IS AVAILABLE ON REQUEST

UTM GRID AND 1944 MAGNETIC NORTH
DECLINATION AT CENTER OF SHEET

ROAD CLASSIFICATION
1946
Dependable hard surface
heavy-duty road
Secondary hard surface
all weather road
Dry weather roads
Loose-surface graded
Unsurfaced, graded
Dirt road
U. S. Route 51
State Route 51

File No. (W070515)
NOKOMIS 7 MI.
COFFEEN 9 MI.
HILLSBORO 16.1 MI.
COFFEEN 9.9 MI.
VAN BURENSBURG 1.6 MI.
GREENVILLE 3.6 MI.

3.8 MI. (SHELBYVILLE)
HERRICK 2.5 MI.
TOWER HILL 15.8 MI.
WRIGHTS CORNERS 8.3 MI.
JUNC. STATE NO. 128 14.3 MI.
ST. ELMO 10.0 MI.
ST. BINGHAM 27.4 MI.
(WINNAUOY) 3.6 MI.

PANA 10 MI.
CONCEE 2.2 MI.

VANDALIA 3 MI.
SANDOVAL 28 MI.
CENTRALIA 35 MI.