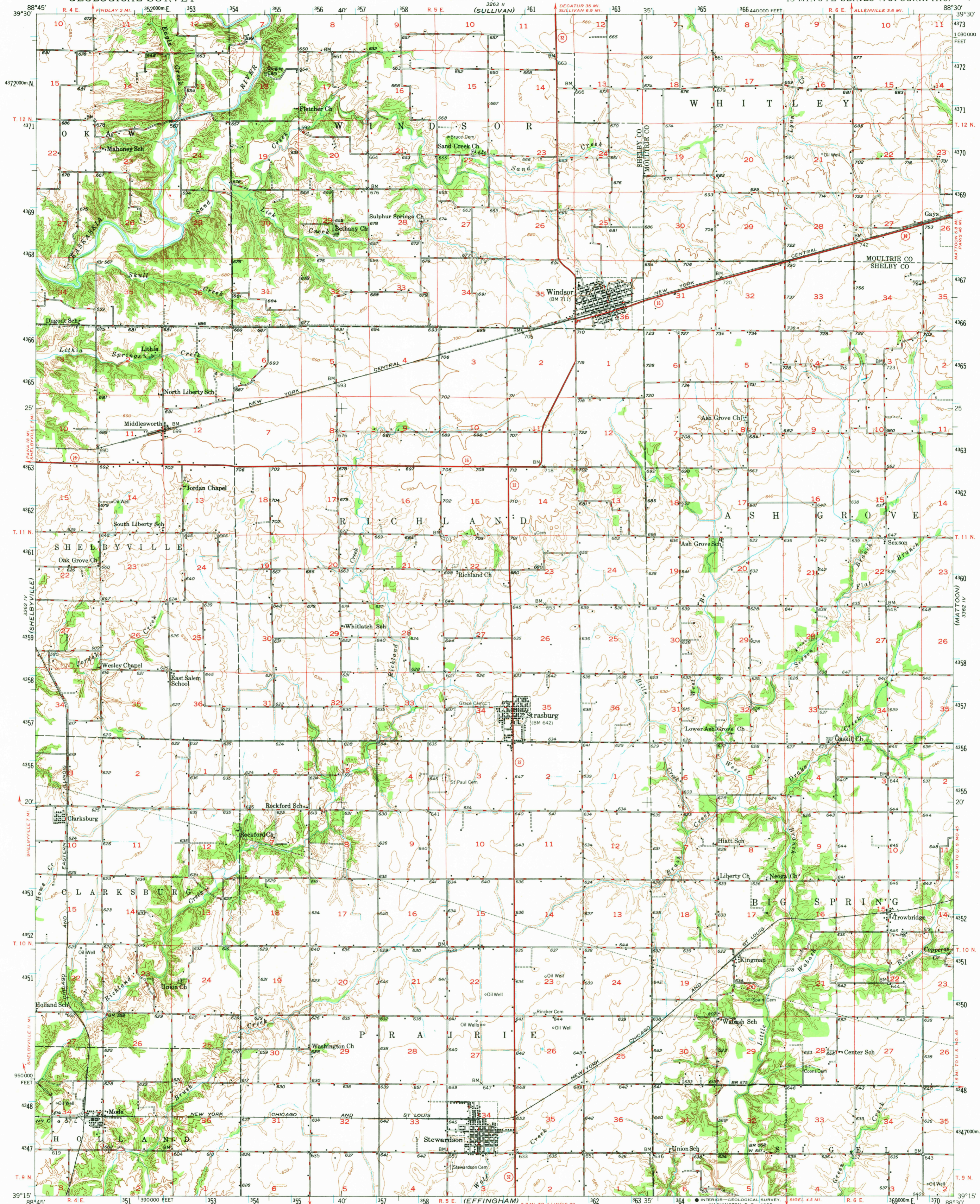


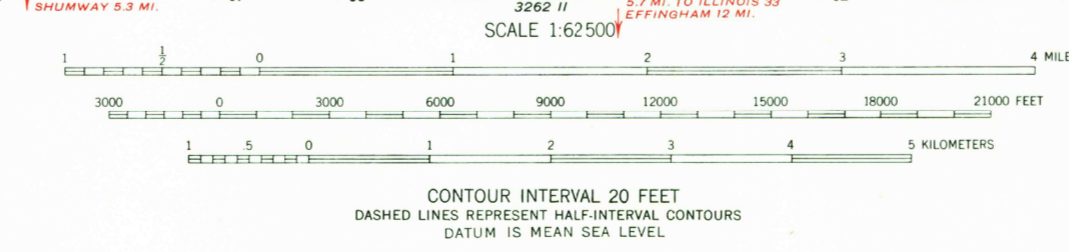
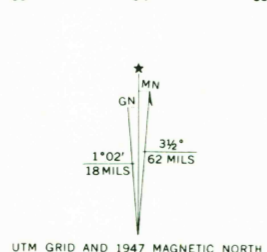
STATE OF ILLINOIS
DEPARTMENT OF REGISTRATION AND EDUCATION
GEOLOGICAL SURVEY DIVISION
URBANA, ILLINOIS

STEWARDSON QUADRANGLE
ILLINOIS
15 MINUTE SERIES (TOPOGRAPHIC)

UNITED STATES
DEPARTMENT OF THE INTERIOR
GEOLOGICAL SURVEY



Mapped, edited, and published by the Geological Survey
Control by USGS and USC&GS
Culture and drainage in part compiled from
aerial photographs taken 1939
Topography by plane-table methods 1935 and 1947
Polyconic projection. 1927 North American datum
10000-foot grid based on Illinois coordinate system,
east zone
1000-meter Universal Transverse Mercator grid ticks,
zone 16, shown in blue



CONTOUR INTERVAL 20 FEET
DASHED LINES REPRESENT HALF-INTERVAL CONTOURS
DATUM IS MEAN SEA LEVEL

ROAD CLASSIFICATION
HEAVY-DUTY ALL WEATHER ROADS DRY WEATHER ROADS
IMPROVED DIRT
UNIMPROVED DIRT
LOOSE-SURFACE, GRADED, OR NARROW HARD-SURFACE
U. S. ROUTE STATE ROUTE

STEWARDSON, ILL.
N3915-W8830/15
1947
AMS 3262 I-SERIES V763

THIS MAP COMPLIES WITH NATIONAL MAP ACCURACY STANDARDS
FOR SALE BY U. S. GEOLOGICAL SURVEY, WASHINGTON, D. C. 20242
AND BY THE STATE GEOLOGICAL SURVEY, URBANA, ILLINOIS
A FOLDER DESCRIBING TOPOGRAPHIC MAPS AND SYMBOLS IS AVAILABLE ON REQUEST

USGS
HISTORICAL FILE
TOPOGRAPHIC DIVISION

MAY 2 1975 2675