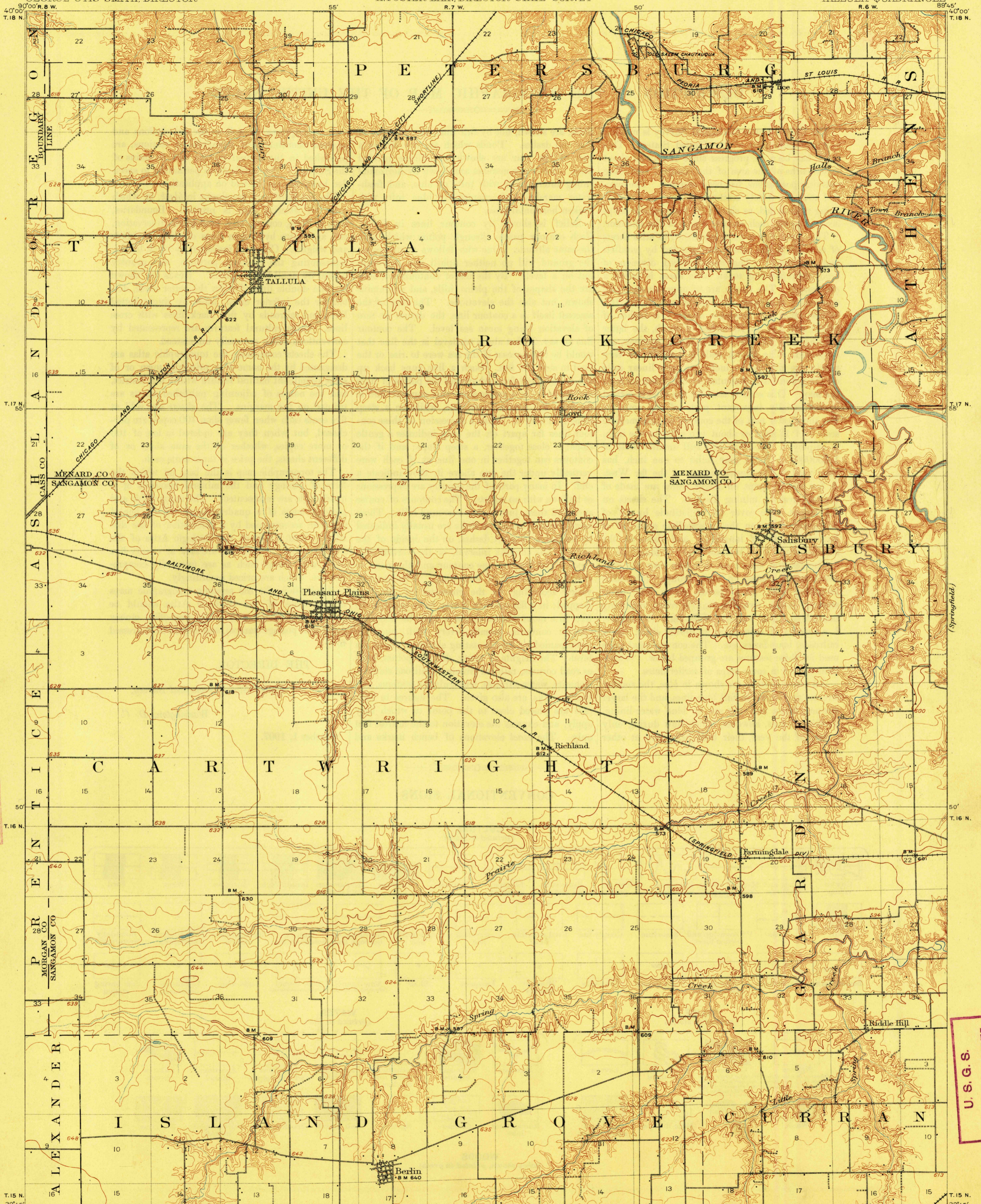


TOPOGRAPHY

U.S. GEOLOGICAL SURVEY
GEORGE OTIS SMITH, DIRECTOR

STATE OF ILLINOIS
GOVERNOR C.S. DENEEN, T.C. CHAMBERLIN, E.J. JAMES, COMMISSIONERS
H. FOSTER BAIN, DIRECTOR STATE SURVEY

ILLINOIS
TALLULA QUADRANGLE



FILE COPY
Ed. Div. Topographic Maps.

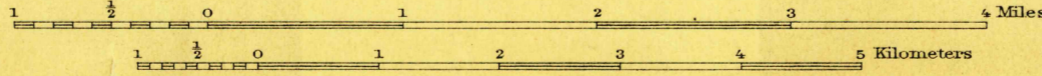
U.S.G.S.
FILE COPY
Ed. Div. Topographic Maps.

ENGRAVED SEPT. 1908 BY U.S.G.S.

H.M. Wilson and W.H. Herron, Geographers in charge.
Topography by W.J. Lloyd and A.T. Fowler.
Control by E.L. McNair and Geo. T. Hawkins.
Surveyed in 1906-1907.

SURVEYED IN COOPERATION WITH THE STATE OF ILLINOIS.

Scale 62500



Contour interval 10 feet.
Datum is mean sea level.

USGS
Historical File
Topographic Division

Edition of Feb. 1909.

APR 20 1909

3598

TALLULA