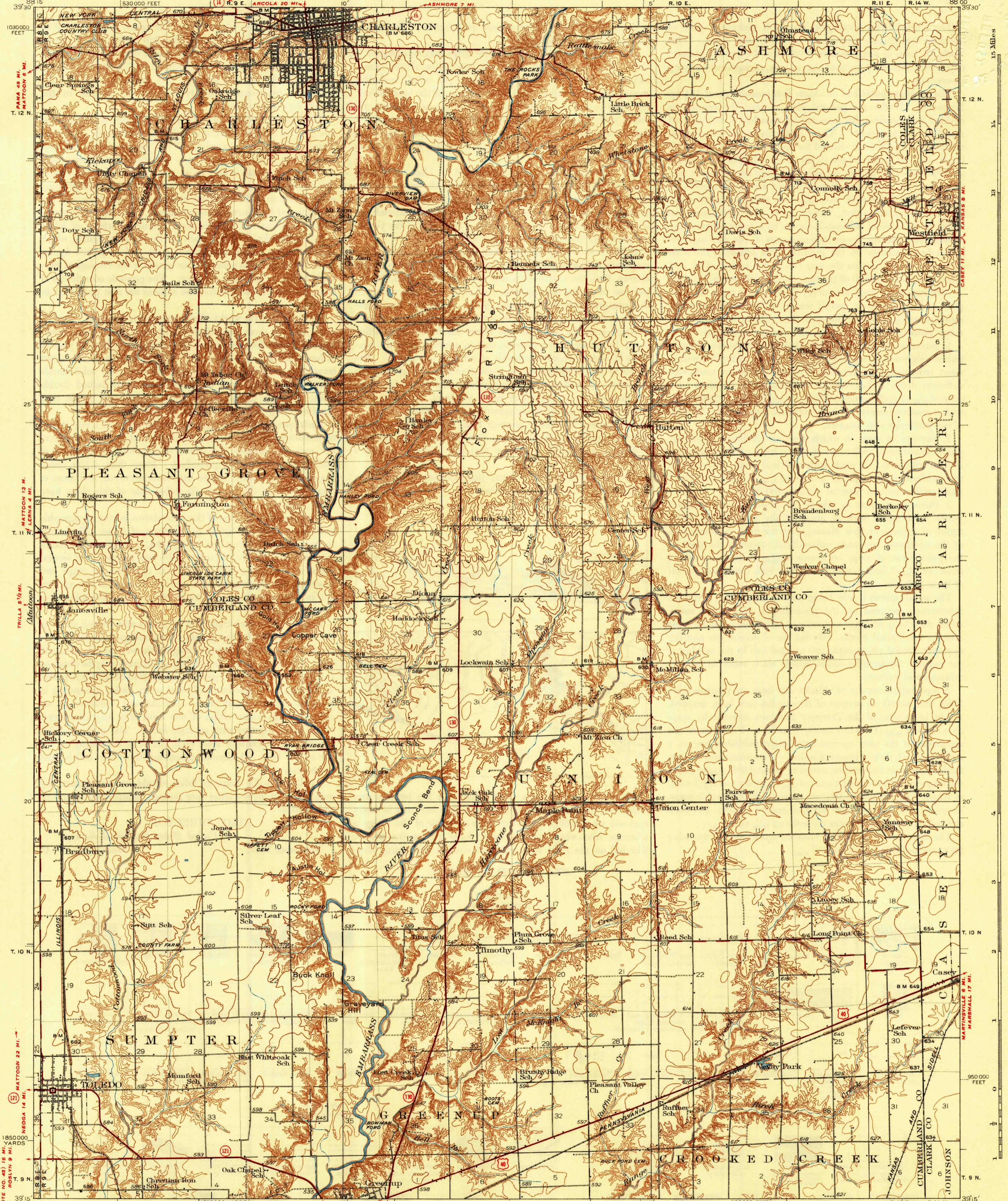


UNITED STATES
DEPARTMENT OF THE INTERIOR
GEOLOGICAL SURVEY

STATE OF ILLINOIS
HENRY HORNER, GOVERNOR
DEPARTMENT OF REGISTRATION AND EDUCATION
JOHN J. HALLIHAN, DIRECTOR
GEOLOGICAL SURVEY DIVISION, M. M. LEIGHTON, CHIEF, URBANA, ILLINOIS

ILLINOIS
TOLEDO QUADRANGLE



Topography by H.E. Simmons, J.C. Hilliard, W.S. Beames, J.K. Bailey, and A.T. Munson
Culture and drainage in part compiled from aerial photographs taken by Air Corps, U.S. Army
Surveyed in 1922, 1932, and 1933

Scale 1:25,000
5000 10000 15000 20000 Feet
1 2 3 4 5 Kilometers
Contour interval 10 feet
Datum is mean sea level

Polyconic projection. North American datum
5000 yard grid based on U.S. zone system, C
10000 foot grid based on Illinois (East)
rectangular coordinate system

HARD IMPERVIOUSLY SURFACED ROADS
OTHER MAIN TRAVELED ROADS
1938
UNITED STATES ROUTE NUMBER
STATE ROUTE NUMBER

TOLEDO, ILL.
Edition of 1938

USGS Library
Reston, VA.
Topo Archive