

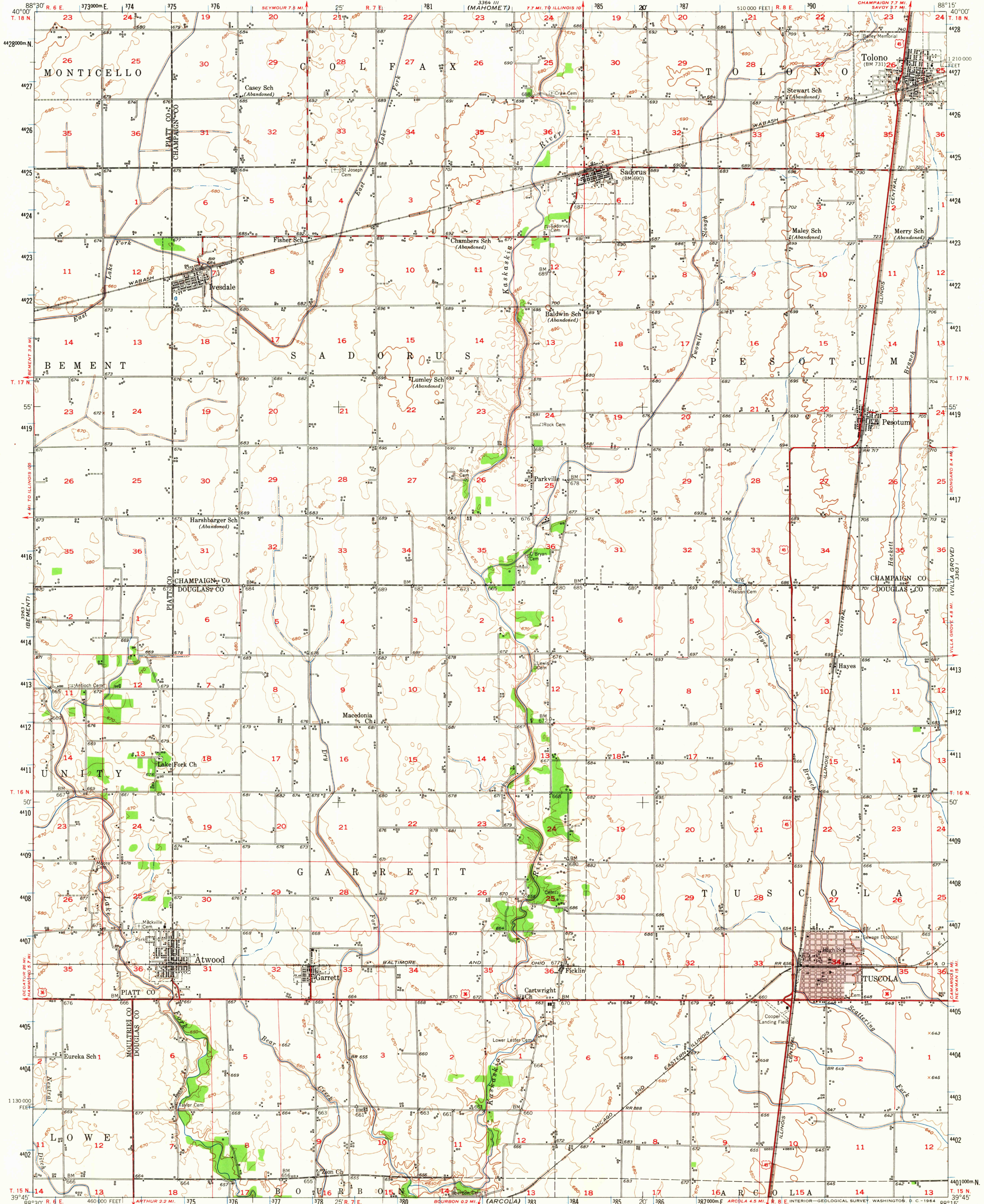
(MONTICELLO)

UNITED STATES  
DEPARTMENT OF THE INTERIOR  
GEOLOGICAL SURVEY

STATE OF ILLINOIS  
DEPARTMENT OF REGISTRATION AND EDUCATION  
GEOLOGICAL SURVEY DIVISION, URBANA, ILLINOIS

TUSCOLA QUADRANGLE  
ILLINOIS  
15 MINUTE SERIES (TOPOGRAPHIC)

(URBANA)



Mapped, edited, and published by the Geological Survey

Control by USGS and USC&GS

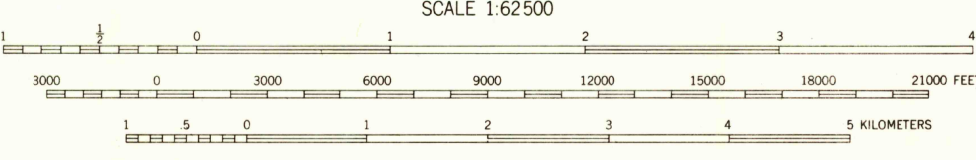
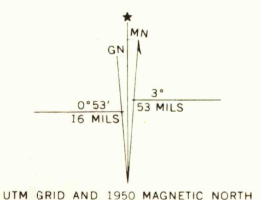
Culture and drainage in part compiled from aerial photographs taken 1948

Topography by plane-table methods 1935 and 1950

Polygonic projection. 1927 North American datum 10,000-foot grid based on Illinois coordinate system, east zone

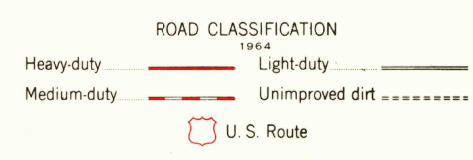
Red tint indicates area in which only landmark buildings are shown

1000-meter Universal Transverse Mercator grid ticks, zone 16, shown in blue



CONTOUR INTERVAL 10 FEET  
DATUM IS MEAN SEA LEVEL

Historical File  
Topographic Division



TUSCOLA, ILL.  
N3945-W8815/15

1950

AMS 3363 IV—SERIES V753

AUG 4 1964

1670

THIS MAP COMPLIES WITH NATIONAL MAP ACCURACY STANDARDS  
FOR SALE BY U. S. GEOLOGICAL SURVEY, WASHINGTON 25, D. C.  
AND BY THE STATE GEOLOGICAL SURVEY, URBANA, ILLINOIS  
A FOLDER DESCRIBING TOPOGRAPHIC MAPS AND SYMBOLS IS AVAILABLE ON REQUEST