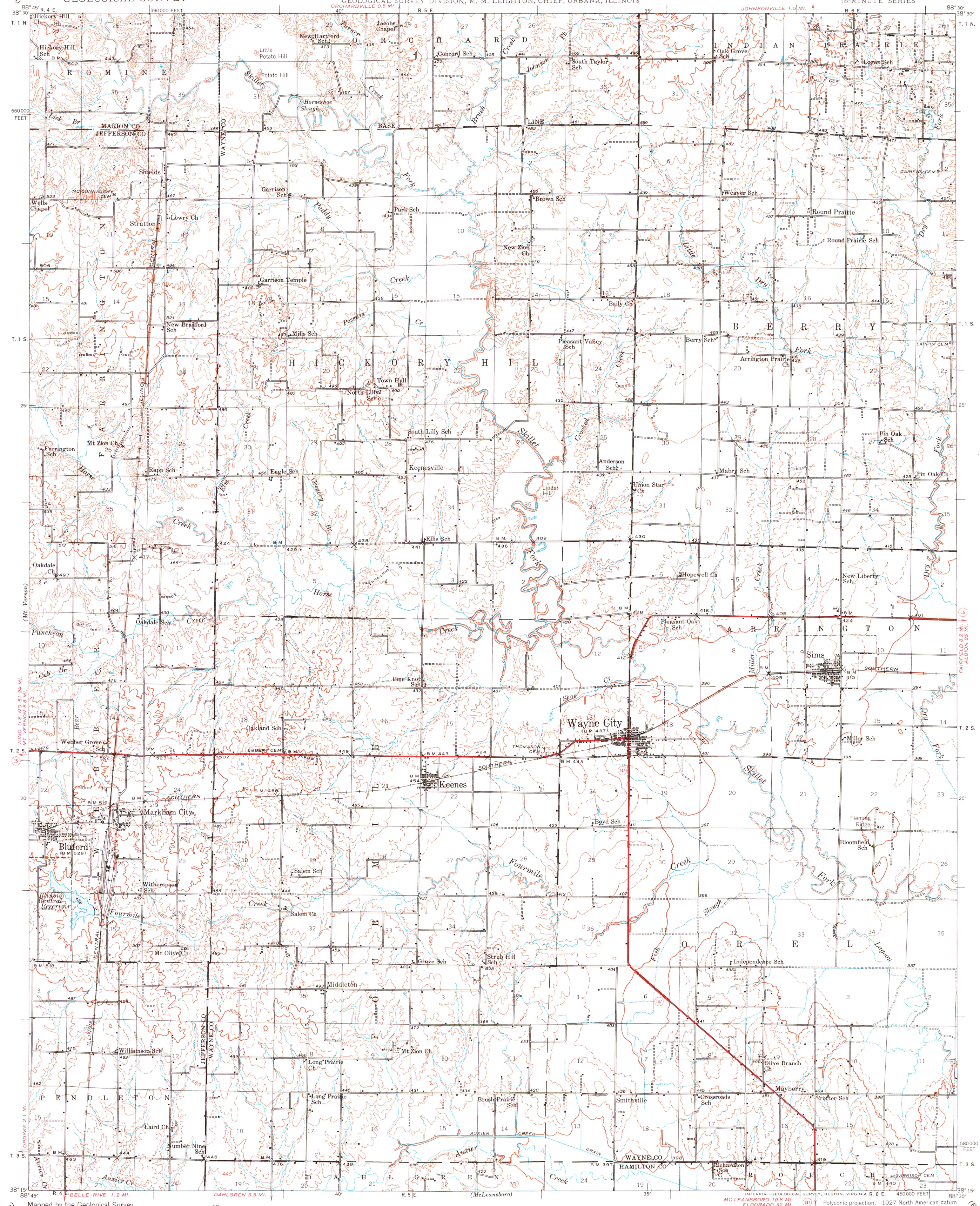


UNITED STATES  
DEPARTMENT OF THE INTERIOR  
GEOLOGICAL SURVEY

STATE OF ILLINOIS  
DWIGHT H. GREEN, GOVERNOR  
DEPARTMENT OF REGISTRATION AND EDUCATION  
FRANK H. THOMPSON, DIRECTOR  
GEOLOGICAL SURVEY DIVISION, M. M. LEIGHTON, CHIEF, URBANA, ILLINOIS

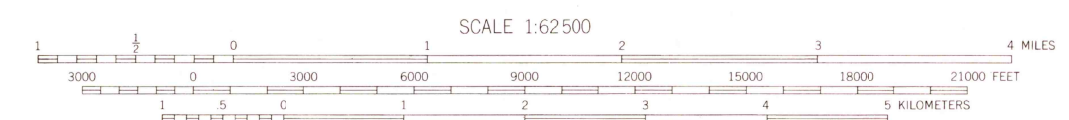
ILLINOIS  
WAYNE CITY QUADRANGLE  
15-MINUTE SERIES



Mapped by the Geological Survey  
1945

ROAD CLASSIFICATION  
Heavy duty ——— Light duty  
Unimproved dirt - - - - -  
○ State Route

TRUE NORTH  
MAGNETIC NORTH  
APPROXIMATE MEAN  
DECLINATION, 1945



Contour interval 20 feet  
10 foot Contours added in dashed lines  
Datum is mean sea level

USGS  
Historical File  
Topographic Division

INTERIOR-GEOLOGICAL SURVEY, RESTON, VIRGINIA R 6 E. 450000 FEET  
MC LEANSBORO 10.8 MI. ELDERADO 32 MI.  
POLYCONIC PROJECTION. 1927 NORTH AMERICAN DATUM  
10000 FOOT GRID BASED ON ILLINOIS (EAST)  
RECTANGULAR COORDINATE SYSTEM

WAYNE CITY, ILL.  
Edition of 1947

N 3815 - W 8830 / 15

APR 2 1975

1180