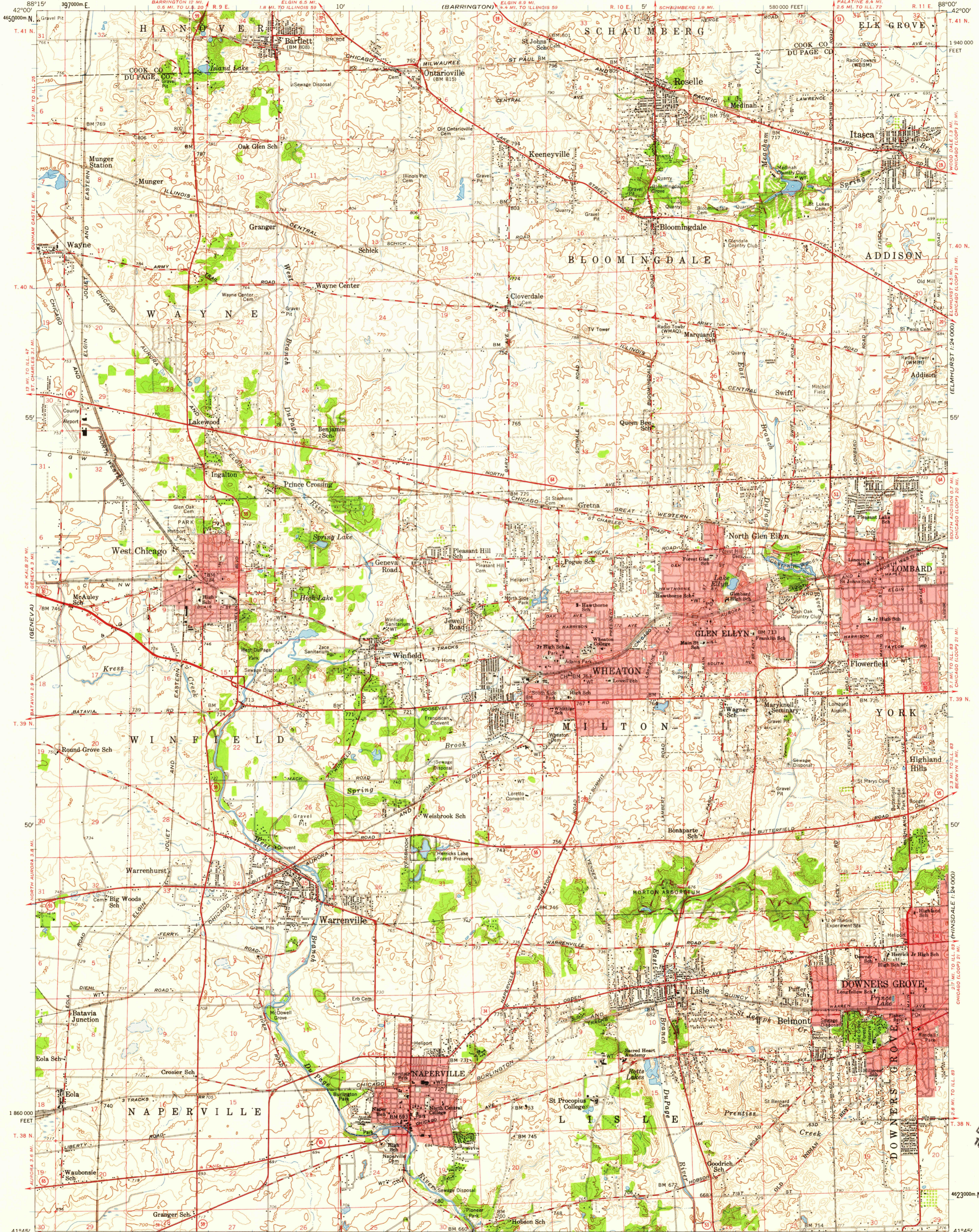
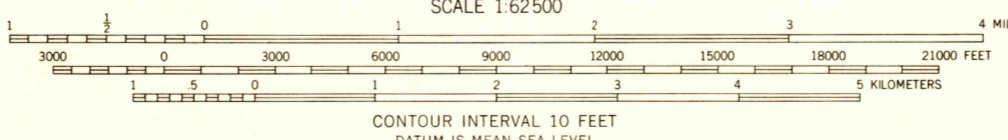


UNITED STATES  
DEPARTMENT OF THE INTERIOR  
GEOLOGICAL SURVEY

WHEATON QUADRANGLE  
ILLINOIS  
15 MINUTE SERIES (TOPOGRAPHIC)



Mapped, edited, and published by the Geological Survey  
Control by USGS and USC&GS  
Compiled in 1960 from 1:24,000-scale maps of Lombard, West Chicago, Naperville, and Wheaton 7.5 minute quadrangles, surveyed 1953-1954  
Topography from aerial photographs by photogrammetric methods and by planimeter surveys. Aerial photographs taken 1952  
Polyconic projection. 1927 North American datum  
10,000-foot grid based on Illinois coordinate system, east zone, 1000-meter Universal Transverse Mercator grid ticks, zone 16, shown in blue  
Red tint indicates areas in which only landmark buildings are shown



Historical File  
Topographic Division  
ROAD CLASSIFICATION  
Medium-duty Light-duty  
Unimproved dirt  
U.S. Route State Route  
This area also covered by 1:24,000-scale maps of Lombard 1953, West Chicago 1953, Naperville 1953, and Wheaton 1954 7.5 minute quadrangles

THIS MAP COMPLIES WITH NATIONAL MAP ACCURACY STANDARDS  
FOR SALE BY U. S. GEOLOGICAL SURVEY, WASHINGTON 25, D. C.  
AND BY THE STATE GEOLOGICAL SURVEY, URBANA, ILLINOIS  
A FOLDER DESCRIBING TOPOGRAPHIC MAPS AND SYMBOLS IS AVAILABLE ON REQUEST

WHEATON, ILL.  
N4145-W8800/15  
1954

U.S.G.S.  
FILE COPY  
TOPOGRAPHIC (TW222)

JUN 17 1961  
6549 (505)2  
1:24,000

2555