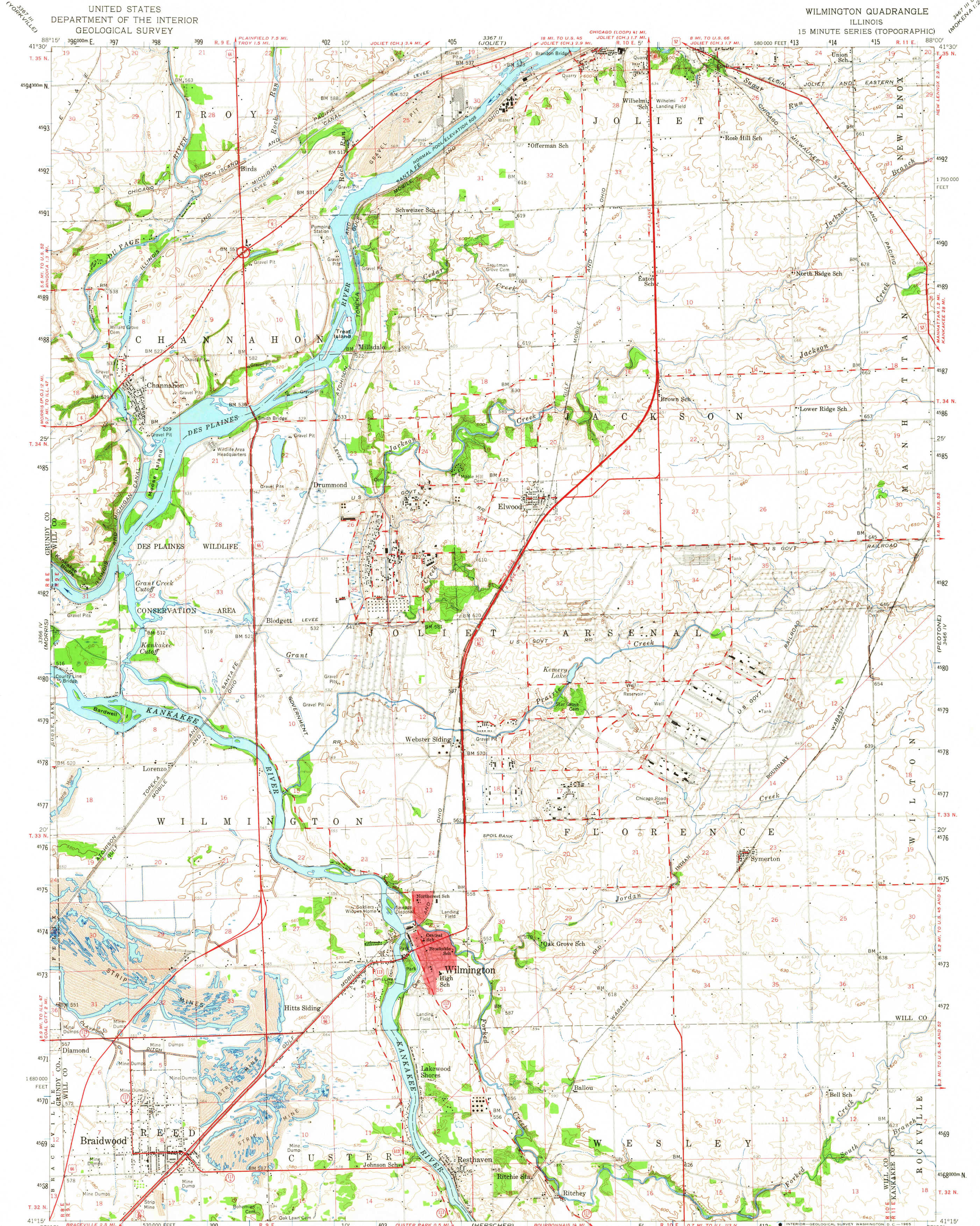


WILMINGTON QUADRANGLE
ILLINOIS
15 MINUTE SERIES (TOPOGRAPHIC)



Mapped, edited, and published by the Geological Survey

Control by USGS, USC&GS, and USCE

Compiled in 1959 from 1:24 000-scale maps of Elwood, Channahon, Wilmington, and Symerton 7.5 minute quadrangles, surveyed 1953-1954. Culture and drainage in part compiled from aerial photographs taken 1952. Topography by planetable surveys

Polyconic projection. 1927 North American datum
10,000-foot grid based on Illinois coordinate system, east zone
1000-meter Universal Transverse Mercator grid ticks,
zone 16, shown in blue

Red tint indicates areas in which only
landmark buildings are shown

landmark buildings are shown

SCALE 1:62,500

0 1 2 3 4 MILES

0 3000 6000 9000 12000 15000 18000 21000 FEET



0 1 2 3 4 5 KILOMETERS

CONTOUR INTERVAL 10 FEET
DOTTED LINES REPRESENT 5-FOOT CONTOUR

THIS MAP COMPLIES WITH NATIONAL MAP ACCURACY STANDARDS
FOR SALE BY U.S. GEOLOGICAL SURVEY, WASHINGTON, D.C. 20242
AND BY THE STATE GEOLOGICAL SURVEY, URBANA, ILLINOIS
ORDER DESCRIBING TOPOGRAPHIC MAPS AND SYMBOLS IS AVAILABLE ON REQUEST

Historical File
Topographic Division

ROAD CLASSIFICATION

Heavy-duty ————— Light-duty —————
Medium-duty ———— Unimproved dirt - - - - -
 U. S. Route  State Route

This area also covered by 1:24,000-scale maps of Elwood 1953, Channahon 1954, Wilmington 1954

WILMINGTON, ILL.

N 4115—W 8800/15

1954

AMS 3366 I-SERIES V763

2515
DEC 22 1965



ILLINOIS

QUADRANGLE LOCATION

U.S.G.S.

FIVE

TOPOGRAPHIC