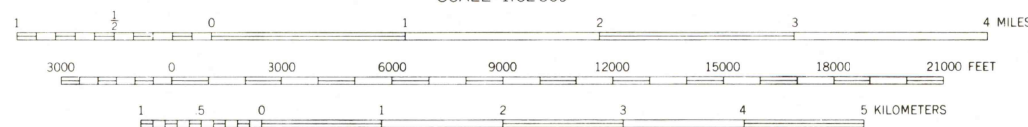


Topography by W.L. Miller, R.F. Wilcoxon, and W.E. Baird  
Surveyed in 1921 and 1924



Polyconic projection. 1927 North American datum.  
10,000-foot grid based on Illinois coordinate system,  
west zone  
THROUGH ROUTES  
SECONDARY ROUTES

WINCHESTER, ILL.  
N3930—W9015/15  
1924

CONTOUR INTERVAL 20 FEET  
DATUM IS MEAN SEA LEVEL  
FOR SALE BY U. S. GEOLOGICAL SURVEY, RESTON, VIRGINIA 22092  
AND STATE GEOLOGICAL SURVEY, URBANA, ILLINOIS 61801  
A FOLDER DESCRIBING TOPOGRAPHIC MAPS AND SYMBOLS IS AVAILABLE ON REQUEST