

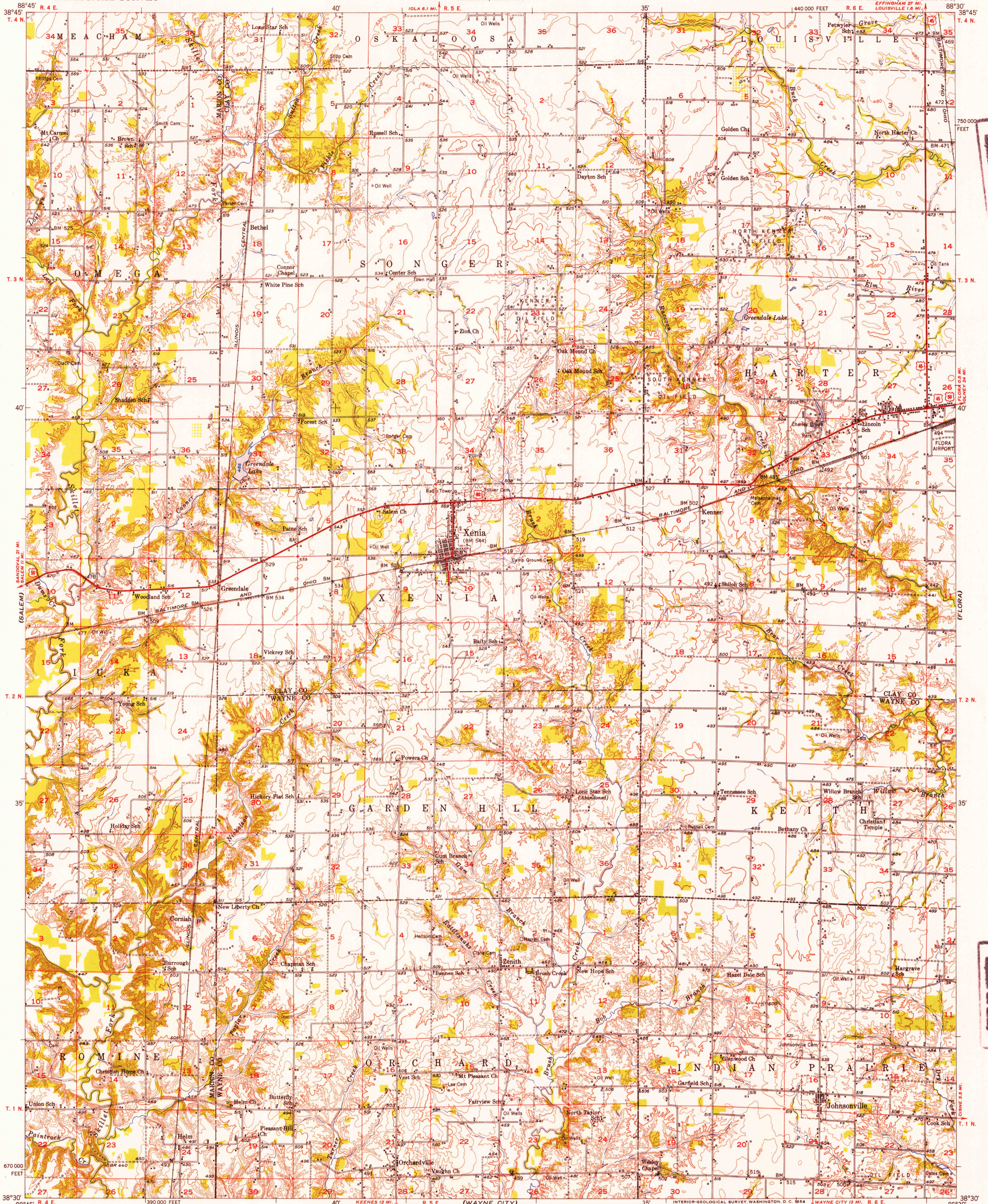
(KINWINDY)

UNITED STATES
DEPARTMENT OF THE INTERIOR
GEOLOGICAL SURVEY

STATE OF ILLINOIS
WILLIAM G. STRATTON, GOVERNOR
DEPARTMENT OF REGISTRATION AND EDUCATION
VERA M. BINKS, DIRECTOR
GEOLOGICAL SURVEY DIVISION, M. M. LEIGHTON, CHIEF
URBANA, ILLINOIS

XENIA QUADRANGLE
ILLINOIS
15 MINUTE SERIES (TOPOGRAPHIC)

(SAILOR SPRINGS)

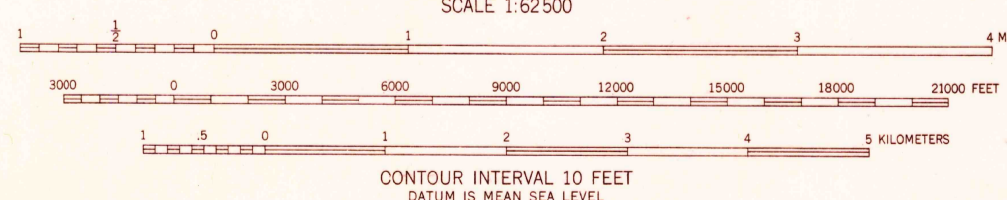


FILE COPY

FILE COPY

Mapped, edited, and published by the Geological Survey
Control by USGS and USC&GS
Culture and drainage in part compiled from aerial photographs
taken 1938 and 1949. Topography by plane-table surveys 1951-1952
Polyconic projection. 1927 North American datum
10,000-foot grid based on Illinois coordinate system,
east zone

TRUE NORTH
MAGNETIC NORTH
APPROXIMATE MEAN
DECLINATION, 1952



USGS
Historical File
Topographic Division
ROAD CLASSIFICATION
Heavy-duty 4 LANE 16 LANE Light-duty
Medium-duty 4 LANE 6 LANE Unimproved dirt
U.S. Route State Route



XENIA, ILL.
N3830-W8830/15

1952

THIS MAP COMPLIES WITH NATIONAL MAP ACCURACY STANDARDS
FOR SALE BY U. S. GEOLOGICAL SURVEY, WASHINGTON 25, D. C.
AND BY THE STATE GEOLOGICAL SURVEY, URBANA, ILLINOIS
A FOLDER DESCRIBING TOPOGRAPHIC MAPS AND SYMBOLS IS AVAILABLE ON REQUEST

MAR 2 1954
2655