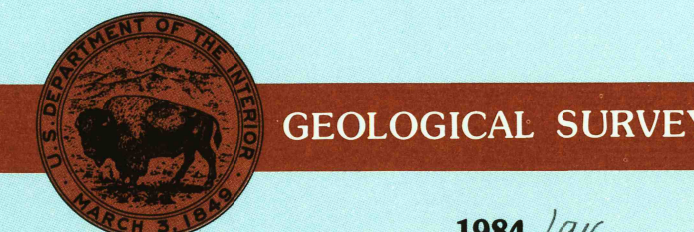




- Contours and elevations in meters
- Highways, roads and other manmade structures
- Water features
- Woodland areas
- Geographic names



Produced by the United States Geological Survey

Compiled from USGS 1:24 000-scale topographic maps dated 1957-1972. Planimetry revised from aerial photographs taken 1980 and other source data. Revised information not field checked. Map edited 1984

1927 North American Datum (NAD 27). Projection and 10 000-meter grid: Universal Transverse Mercator, zone 16 25 000-foot-ticks: Indiana coordinate system, west and east zones

The difference between NAD 27 and North American Datum of 1983 (NAD 83) is too small to show at this scale. The values of the shift between the datums for 7.5-minute intersections are given in USGS Bulletin 1875

There may be private inholdings within the boundaries of the National or State reservations shown on this map. Map photoinspected using 1991 photographs. No major culture or drainage changes shown.

CONTOUR INTERVAL 5 METERS NATIONAL GEODETIC VERTICAL DATUM OF 1929 ELEVATIONS SHOWN TO THE NEAREST METER

THIS MAP COMPLIES WITH NATIONAL MAP ACCURACY STANDARDS

CONVERSION TABLE		DECLINATION DIAGRAM		ADJOINING MAPS		
Meters	Feet	Magnetic Declination		1	2	3
1	3.2808	27° 15' 00" W		1	2	3
2	6.5617	27° 15' 00" W		4	5	6
3	9.8425	27° 15' 00" W		7	8	
4	13.1234	27° 15' 00" W				
5	16.4042	27° 15' 00" W				
6	19.6850	27° 15' 00" W				
7	22.9659	27° 15' 00" W				
8	26.2467	27° 15' 00" W				
9	29.5275	27° 15' 00" W				
10	32.8084	27° 15' 00" W				

To convert meters to feet multiply by 3.2808
 To convert feet to meters multiply by 0.3048
 UTM grid convergence (IGN) and 1984 magnetic declination at center of map
 Diagram is approximate

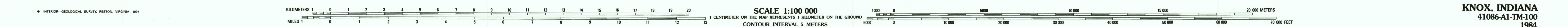
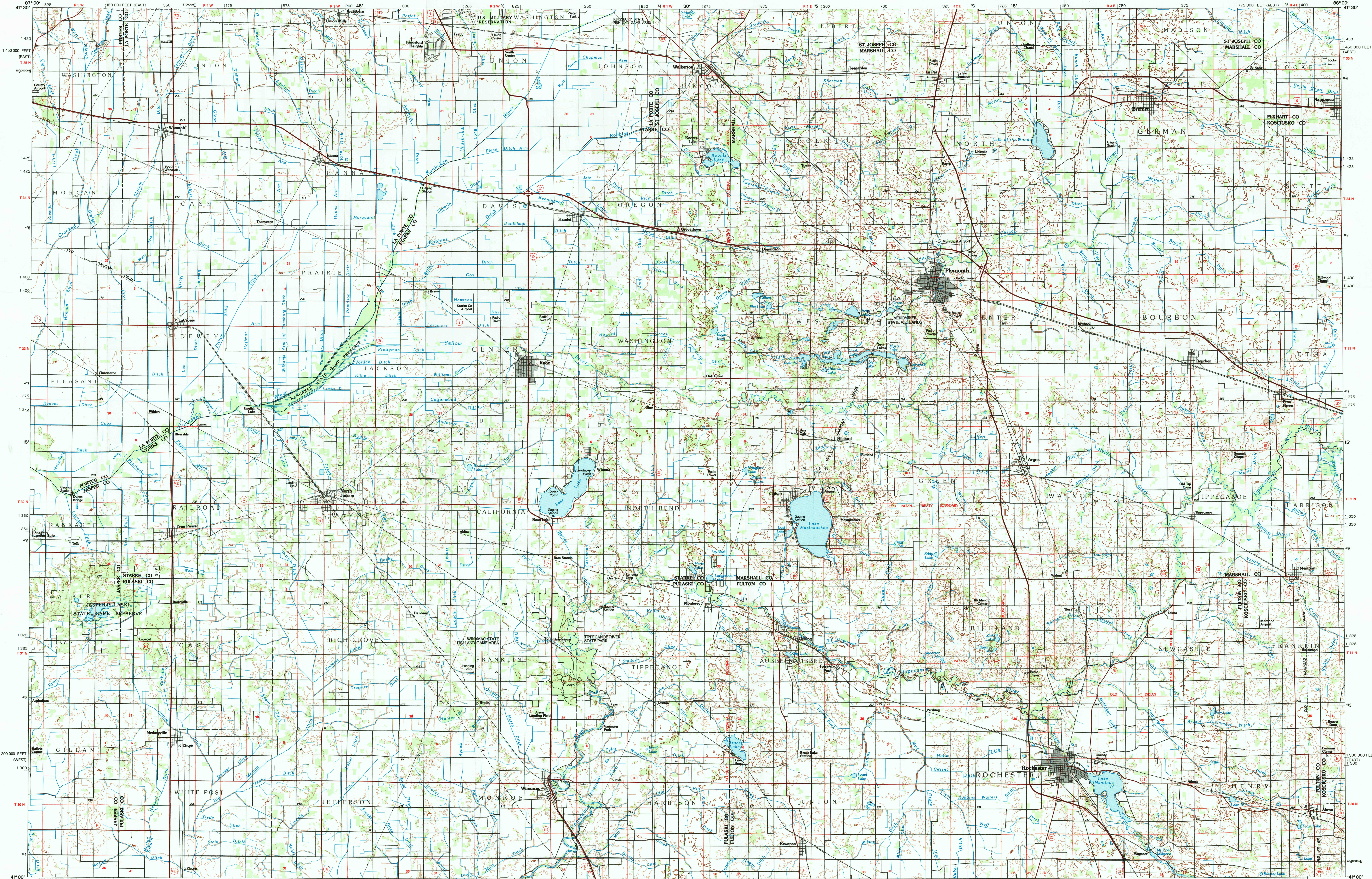
ADJOINING MAPS
1 Chicago
2 South Bend
3 Elletts
4 Kankakee
5 Fort Wayne
6 Wabash
7 Logansport
8 Walkers

FOR SALE BY U.S. GEOLOGICAL SURVEY DENVER, COLORADO 80225, OR RESTON, VIRGINIA 22092

Topographic Map Symbols

- Primary highway, hard surface
- Secondary highway, hard surface
- Light duty road, principal street, hard or improved surface
- Other road or street, trail
- Route marker, Interstate, U.S. State
- Railroad: standard gauge, narrow gauge
- Bridge: overpass, underpass
- Tunnel: road, railroad
- Built up area, locality, elevation
- Airport, landing field, landing strip
- National boundary
- State boundary
- County boundary
- National or State reservation boundary
- Lead pipe boundary
- U.S. public lands survey: range, township, section
- Range, township, section line: protracted
- Power transmission line, pipeline
- Dam; dam with lock
- Cemetery, building
- Windmill; water well; spring
- Mine shaft, adit or cave; mine, quarry; gravel pit
- Campground; picnic area; U.S. location monument
- Ruin; cliff dwelling
- Distorted surface: strip mine, lava, sand
- Contours: index, intermediate, supplementary
- Bathymetric contours: index, intermediate
- Stream, lake: perennial; intermittent
- Rapids, large and small; falls, large and small
- Area to be submerged; marsh, swamp
- Land subject to controlled inundation; woodland
- Sand; mangrove
- Orchard; vineyard

A pamphlet describing topographic maps is available on request



KNOX, INDIANA 41086-A1-TM-100 1984 PHOTOINSPECTED 1991