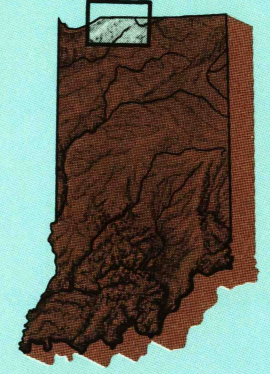


# South Bend

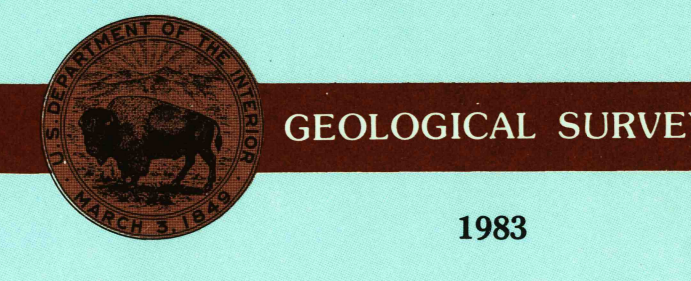
## INDIANA-MICHIGAN

1:100 000-scale  
planimetric map



30 X 60 MINUTE QUADRANGLE  
SHOWING

- Elevations in meters
- Highways, roads and other manmade structures
- Water features
- Woodland areas
- Geographic names



Produced by the United States Geological Survey  
Compiled from USGS 1:24 000-scale topographic maps dated 1945-1980. Planimetry revised from aerial photographs taken and other source data. Revised information not field checked 1980 Map edited 1983  
Projection and 10 000-meter grid, zone 16: Universal Transverse Mercator. 25 000-foot grid ticks based on Michigan coordinate system, south zone and Indiana coordinate system, east and west zones. 1927 North American Datum  
To place on the predicted North American Datum 1983 move the projection lines 1 meter north and 2 meters east  
There may be private inholdings within the boundaries of the National or State reservations shown on this map

NATIONAL GEODETIC VERTICAL DATUM OF 1929  
ELEVATIONS SHOWN TO THE NEAREST METER

THIS MAP COMPLIES WITH NATIONAL MAP ACCURACY STANDARDS

Meters	Feet
1	3.2808
2	6.5617
3	9.8425
4	13.1234
5	16.4042
6	19.6850
7	22.9658
8	26.2467
9	29.5275
10	32.8084

To convert meters to feet multiply by 3.2808  
To convert feet to meters multiply by 0.3048

DECLINATION DIAGRAM

ADJOINING MAPS	1	2	3
1. Washtenaw			
2. Berrien			
3. Cass			
4. Elkhart			
5. Adams			
6. Wayne			
7. Monroe			
8. St. Joseph			

FOR SALE BY U. S. GEOLOGICAL SURVEY  
DENVER, COLORADO 80225, OR RESTON, VIRGINIA 22092

### Topographic Map Symbols

- Primary highway, hard surface
- Secondary highway, hard surface
- Light duty road, principal street, hard or improved surface
- Other road or street; trail
- Route marker: Interstate, U. S., State
- Railroad: standard gage; narrow gage
- Bridge: overpass; underpass
- Tunnel: road; railroad
- Built up area; locality; elevation
- Airport; landing field; landing strip
- National boundary
- State boundary
- National or State reservation boundary
- Land grant boundary
- U. S. public lands survey; range, township; section
- Range, township; section line; protected
- Power transmission line; pipeline
- Dam; dam with lock
- Cemetery; building
- Windmill; water well; spring
- Mine shaft; oil or cave; mine; quarry; gravel pit
- Built up area; locality; elevation
- Campground; picnic area; U. S. location monument
- Ruin; cliff dwelling
- Distorted surface: strip mine, levee, sand
- Contours: index; intermediate; supplementary
- Bathymetric contours: index; intermediate
- Stream, lake; perennial; intermittent
- Rapids, large and small; falls, large and small
- Area to be submerged; marsh; swamp
- Land subject to controlled inundation; woodland
- Scrub; mangrove
- Orchard; vineyard

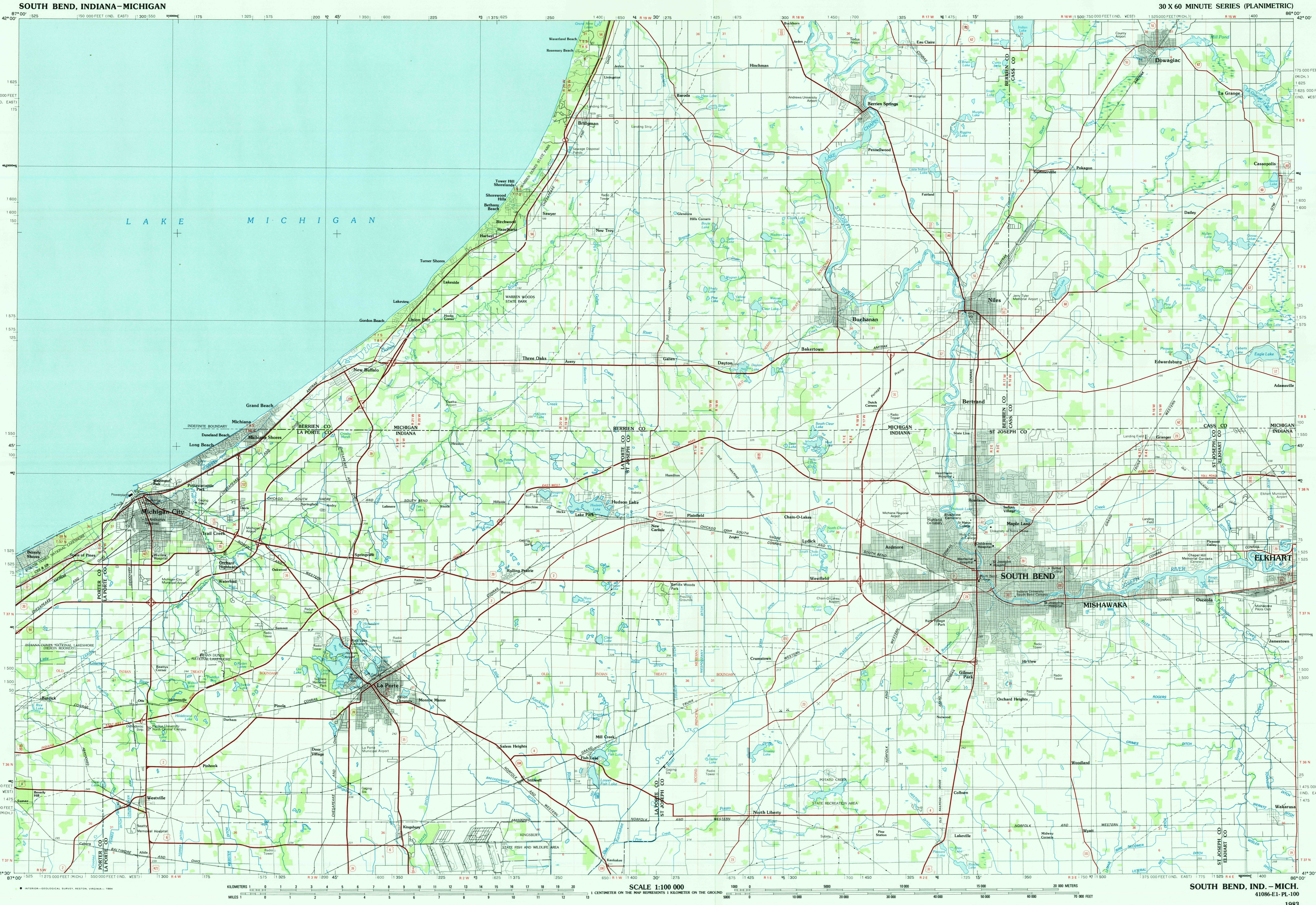
USGS NMD A-100-100000 Topographic maps are available on request

MAY 30 1989

REC'D FILE COPY

41086-EL-PL-100

1983



### SOUTH BEND, INDIANA-MICHIGAN

30 X 60 MINUTE SERIES (PLANIMETRIC)

1:100 000  
1 CENTIMETER ON THE MAP REPRESENTS 1 KILOMETER ON THE GROUND

SCALE 1:100 000  
1 CENTIMETER ON THE MAP REPRESENTS 1 KILOMETER ON THE GROUND

SOUTH BEND, IND.-MICH.  
41086-EL-PL-100

1983