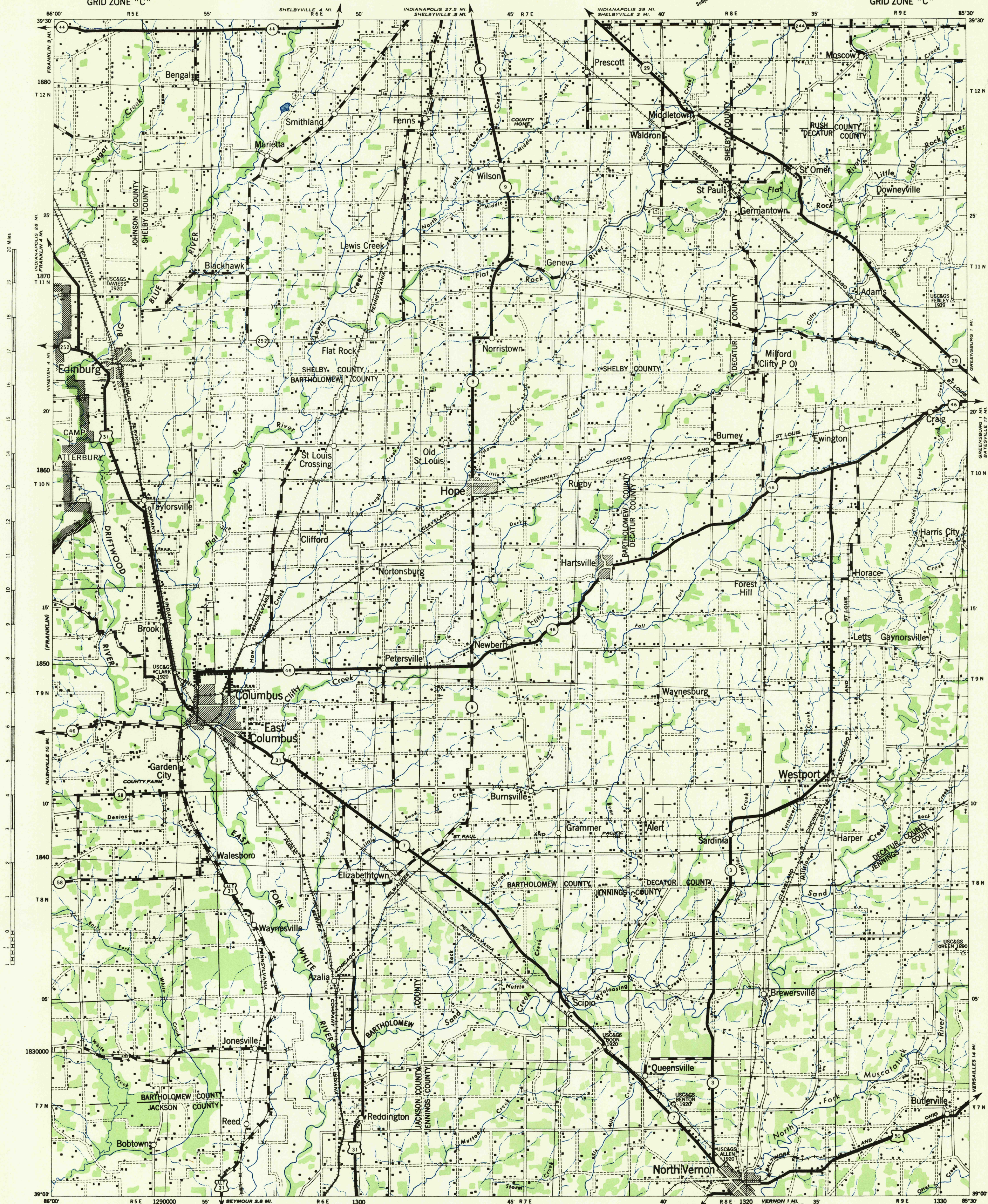


INDIANA
COLUMBUS QUADRANGLE
GRID ZONE "C"

WAR DEPARTMENT
CORPS OF ENGINEERS, U. S. ARMY

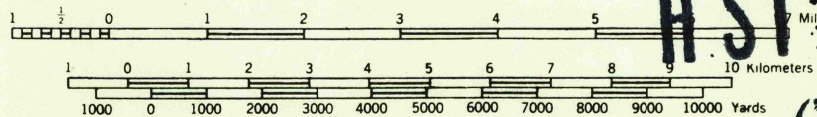
INDIANA
COLUMBUS QUADRANGLE
GRID ZONE "C"

Adverse edition
Subject to correction



Prepared by Soil Conservation Service under the direction of the Chief of Engineers, U. S. Army, 1942.
Horizontal control by U. S. Coast and Geodetic Survey, U. S. Geological Survey, and S. C. S.
Photography by U. S. Department of Agriculture, 1939-1941.
Polyconic projection, North American Datum 1927.

Scale 1:125,000



ROAD CLASSIFICATION 1942
Dependable hard surface
Heavy duty road
Secondary, hard surface,
all-weather road
More than two lanes indicated by note along road with tick at point of change

Loose surface graded,
dry weather road
Unimproved road
State Route

U. S. Route 160
30

TEN THOUSAND YARD GRID COMPUTED FROM GRID SYSTEM FOR PROGRESSIVE MAPS
IN THE U. S. ZONE C, U. S. G. S. SPECIAL PUBLICATION NO. 58
THE LAST THREE DIGITS OF THE GRID NUMBERS ARE OMITTED

NOTE: OFFICERS USING THIS MAP WILL MARK HEREON CORRECTIONS AND ADDITIONS WHICH COME
TO THEIR ATTENTION AND MAIL DIRECT TO THE CHIEF OF ENGINEERS, WASHINGTON, D. C.

APPROXIMATE MEAN
DECLINATION 1942
ANNUAL MAGNETIC CHANGE 2'
INCREASE

ARMY MAP SERVICE, U. S. ARMY, WASHINGTON, D. C., 106147
1942; REVISION 10-42

COLUMBUS, IND.
N3900-W8530/30