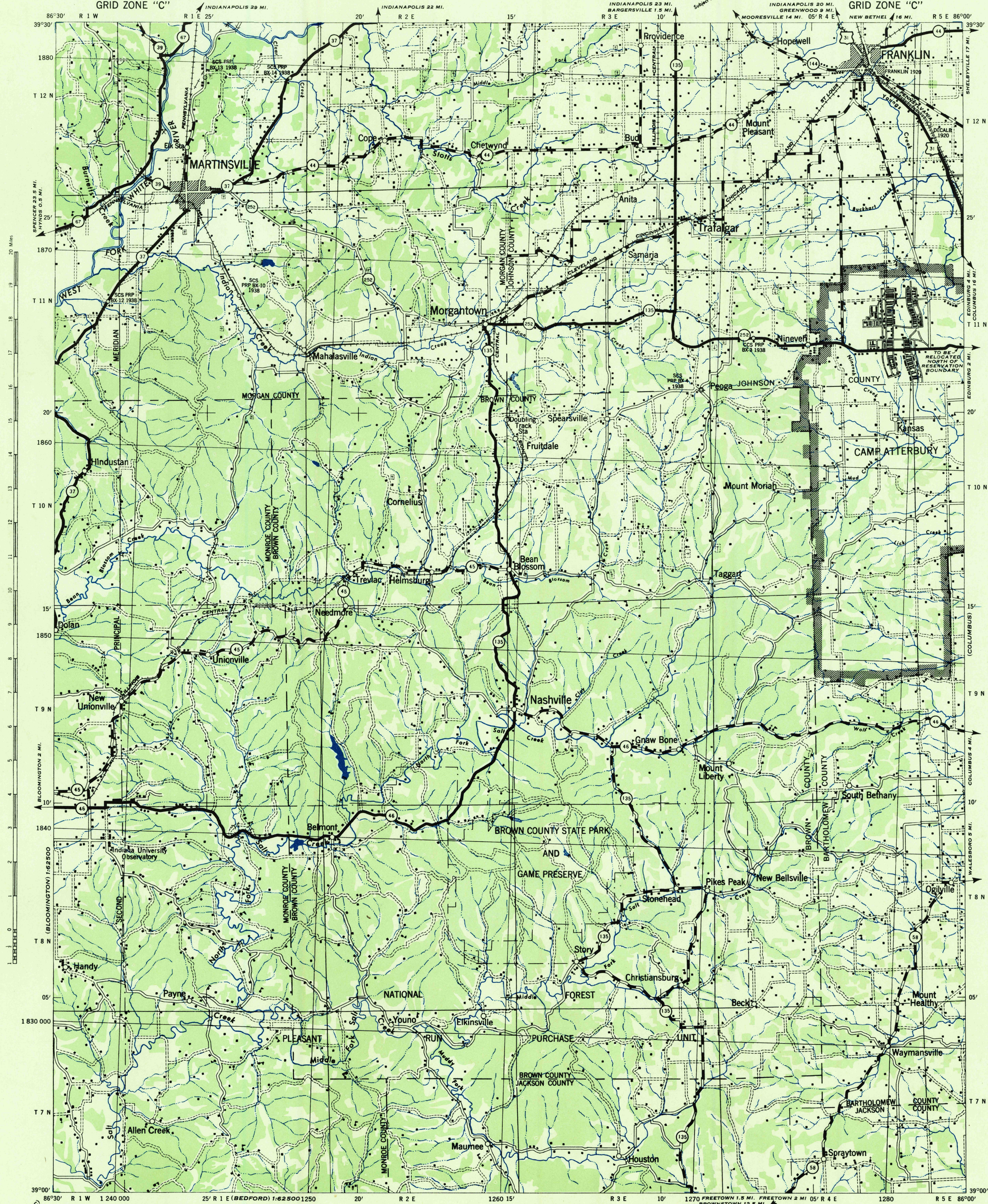


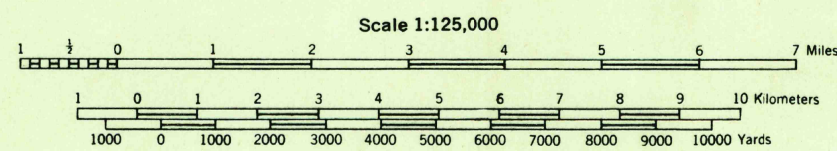
INDIANA  
FRANKLIN QUADRANGLE  
GRID ZONE "C"

WAR DEPARTMENT  
CORPS OF ENGINEERS, U. S. ARMY

INDIANA  
FRANKLIN QUADRANGLE  
GRID ZONE "C"



Prepared by Soil Conservation Service under the direction of the Chief of Engineers, U. S. Army, 1942.  
Horizontal control by U. S. Coast and Geodetic Survey, U. S. Geological Survey, and S. C. S.  
Photography by U. S. Department of Agriculture, 1939-1941.  
Polyconic projection, North American Datum 1927.



ROAD CLASSIFICATION 1942  
Dependable hard surface. Loose surface graded. U. S. Route 160  
Heavy-duty road. dry weather road.  
Secondary, hard surface. Unimproved road. State Route 30  
All-weather road.  
More than two lanes indicated by note along road with tick at point of change.

ARMY MAP SERVICE, U. S. ARMY, WASHINGTON, D. C., 106146  
USGS  
Historical File  
Topographic Division

U. S. G. S.  
FILE COPY  
Inspection and Editing.

FRANKLIN, IND.  
N3900-W8600/30