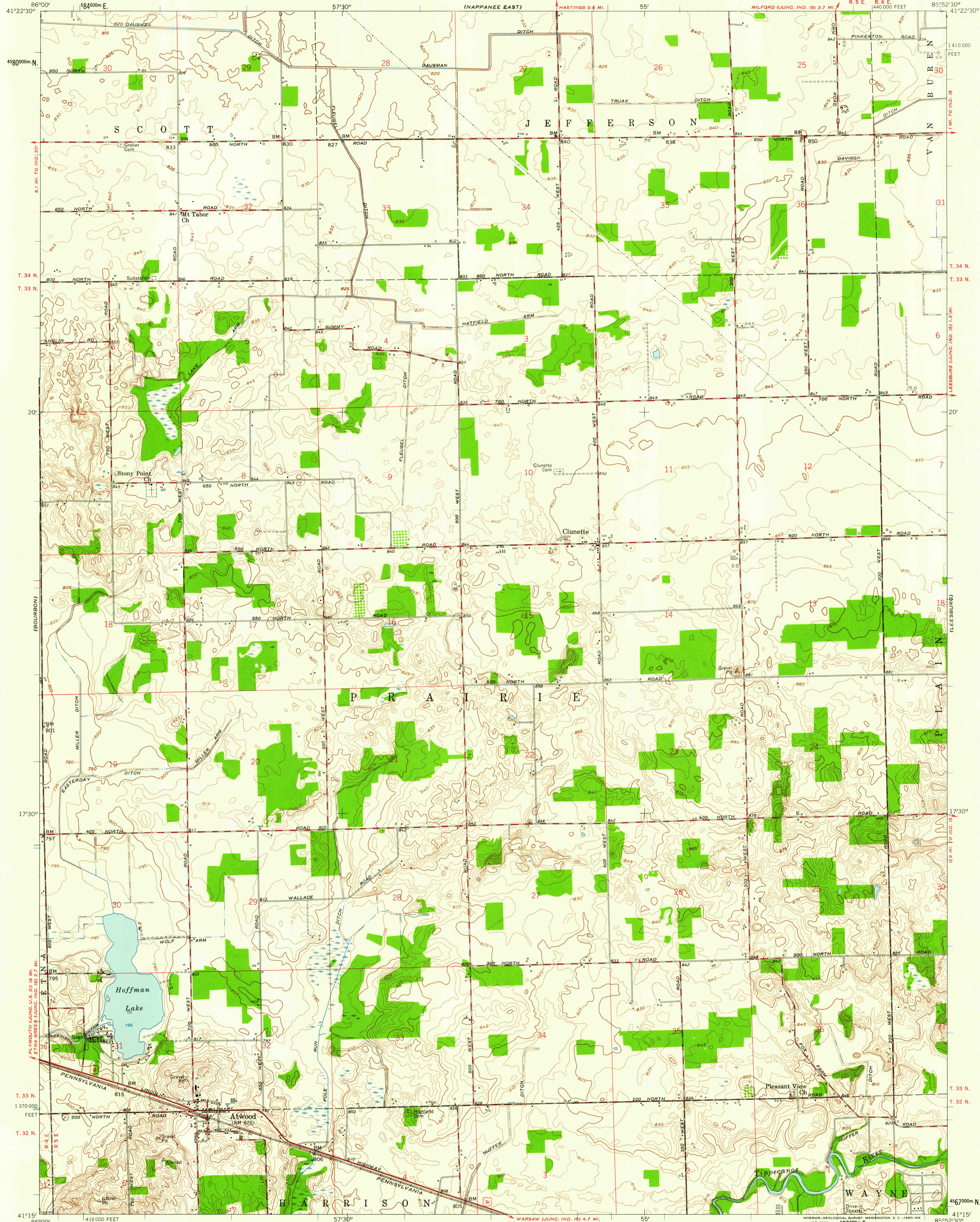
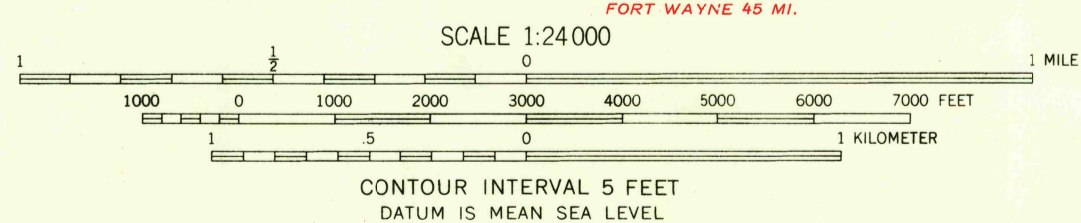


UNITED STATES  
DEPARTMENT OF THE INTERIOR  
GEOLOGICAL SURVEY

ATWOOD QUADRANGLE  
INDIANA-KOSCIUSKO CO.  
7.5 MINUTE SERIES (TOPOGRAPHIC)



Mapped, edited, and published by the Geological Survey  
Control by USGS and USC&GS  
Culture and drainage from controlled aerial photomosaic  
Aerial photographs taken 1956. Topography by planetable  
surveys 1959  
Polyconic projection. 1927 North American datum  
10,000-foot grid based on Indiana coordinate system,  
east zone  
1000-meter Universal Transverse Mercator grid ticks,  
zone 16, shown in blue



USGS  
Historical File  
Topographic Division

ROAD CLASSIFICATION  
Heavy-duty ——— Light-duty ———  
Medium-duty ——— Unimproved dirt - - - - -  
U.S. Route



THIS MAP COMPLIES WITH NATIONAL MAP ACCURACY STANDARDS  
FOR SALE BY U.S. GEOLOGICAL SURVEY, WASHINGTON 25, D. C.  
AND INDIANA DEPARTMENT OF CONSERVATION, INDIANAPOLIS, INDIANA  
A FOLDER DESCRIBING TOPOGRAPHIC MAPS AND SYMBOLS IS AVAILABLE ON REQUEST

ATWOOD, IND.  
N4115-W8552.5/7.5

1959

USGS  
FILE COPY  
TOPOGRAPHIC DIVISION

JAN 4 1961

2525