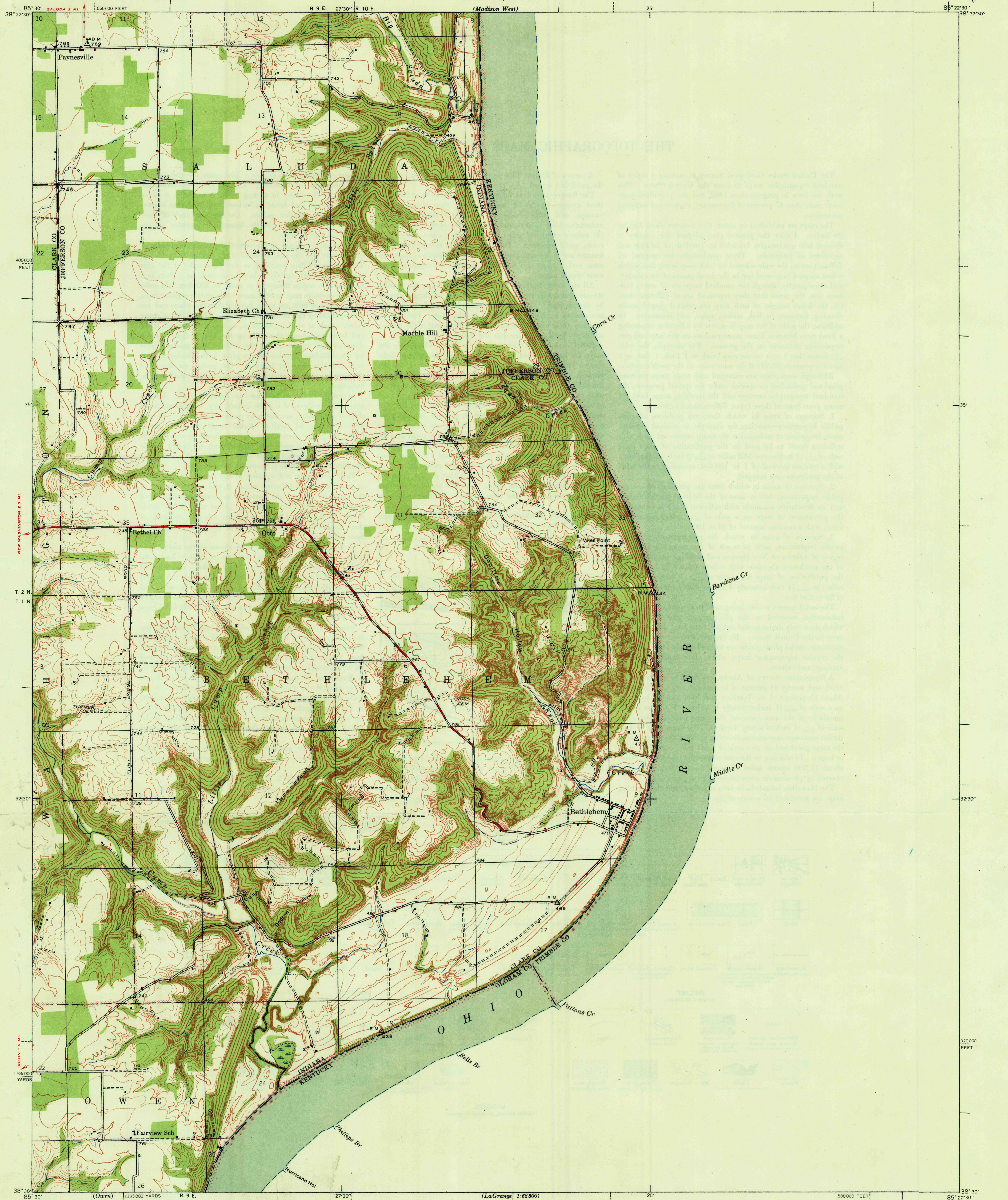


UNITED STATES
DEPARTMENT OF THE INTERIOR
GEOLOGICAL SURVEY

STATE OF INDIANA
INDIANA DEPARTMENT OF CONSERVATION
INDIANAPOLIS, INDIANA

INDIANA-KENTUCKY
BETHLEHEM QUADRANGLE
7 1/2-MINUTE SERIES

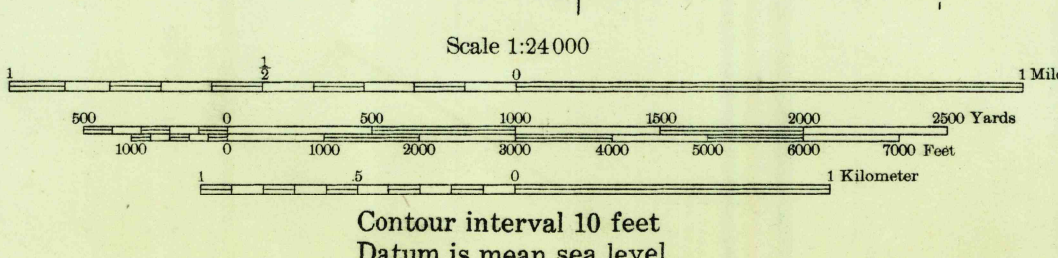
U. S. G. S.
FILE COPY
Inspection and Editing.



Albert Pike, Division Engineer
Topography by G. F. Westinghouse
Surveyed in 1938

ROAD CLASSIFICATION
1947
Dependable hard surface
Heavy duty road
Secondary hard surface
All weather road
More than two lanes indicated along road with tick at point of change
U. S. Route (15)
Unimproved grade
Culvert
State Road (2)

TRUE NORTH
MAGNETIC NORTH
APPROXIMATE MEAN
DECLINATION, 1938



USCS
Historical File
Topographic Division

U. S. G. S.
FILE COPY
Inspection and Editing.

Polyconic projection. 1927 North American datum
5000 yard grid based on U. S. zone system, C
10000 foot grid based on Indiana (East)
rectangular coordinate system

BETHLEHEM, IND.-KY.
Edition of 1948

N 3830 - W 8522.5/7.5

FEB 20 1948

2115