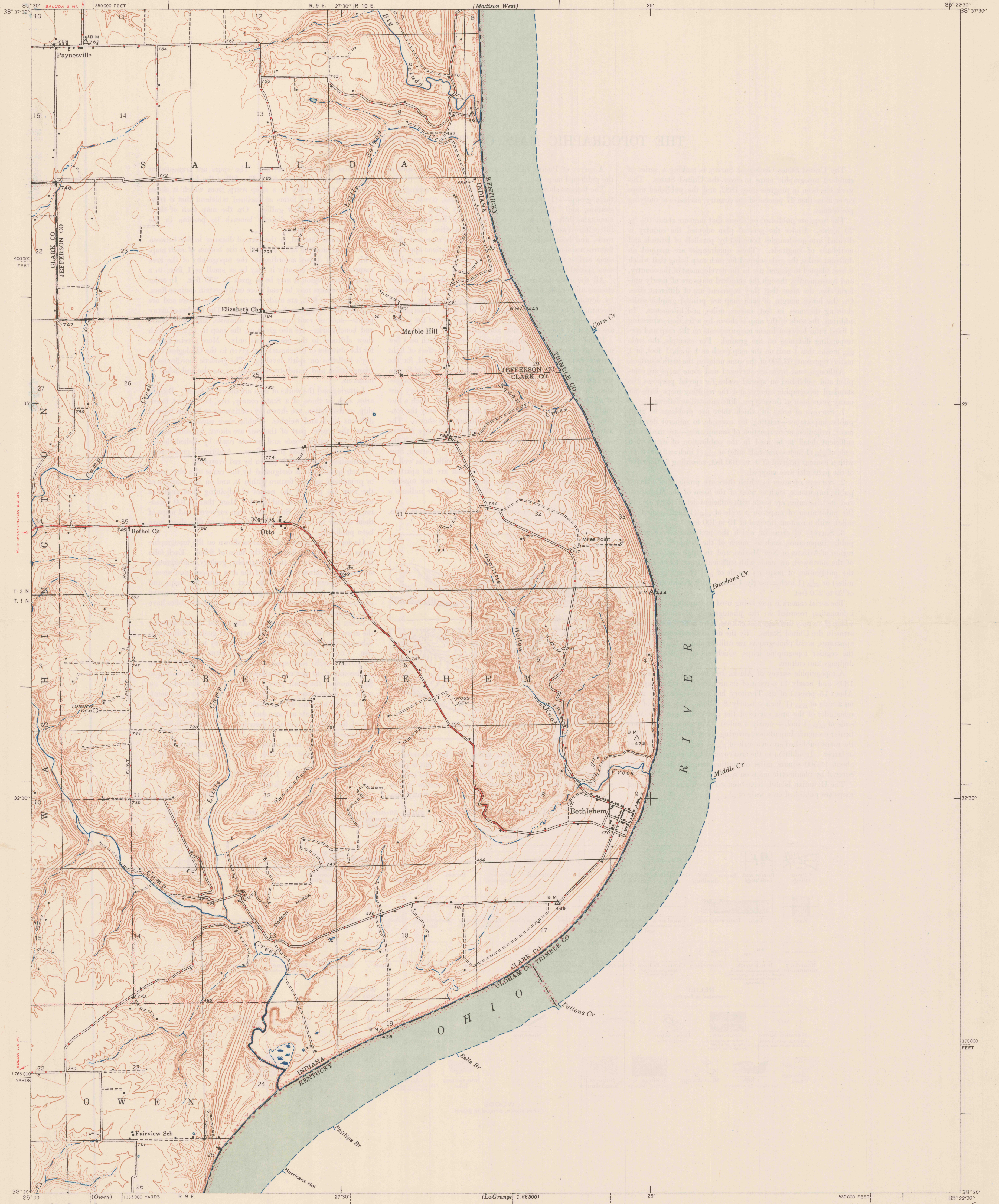


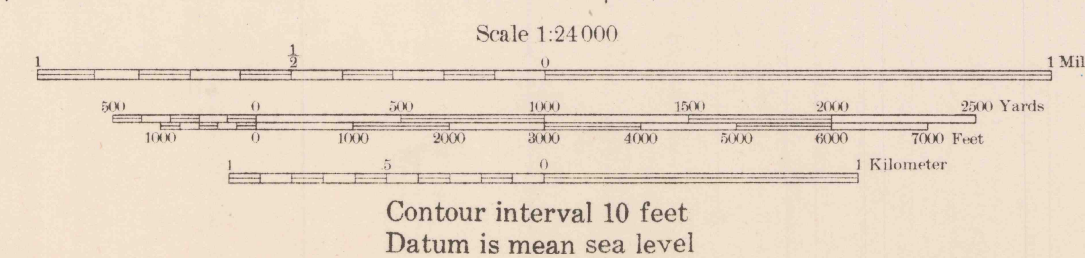
(Madison East)



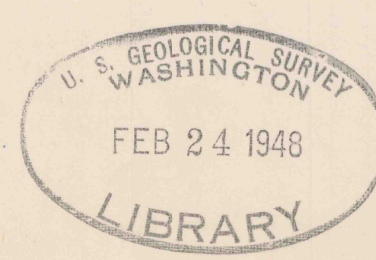
Albert Pike, Division Engineer
Topography by G. F. Westinghouse
Surveyed in 1938

ROAD CLASSIFICATION
1947
Dependent hard surface
Secondary hard surface
at center of road
More than two lanes, indicated along road with tick at point of change
1947
City water main
Water surface grade
State Route
U. S. Route
State Route
U. S. Route

APPROXIMATE MEAN
DECLINATION, 1938



Contour interval 10 feet
Datum is mean sea level



Polyconic projection, 1927 North American datum
5000 yard grid based on U. S. zone system, C
10000 foot grid based on Indiana (East)
rectangular coordinate system

BETHLEHEM, IND.-KY.
Edition of 1948

N 3830 - W 8522.5 / 7.5