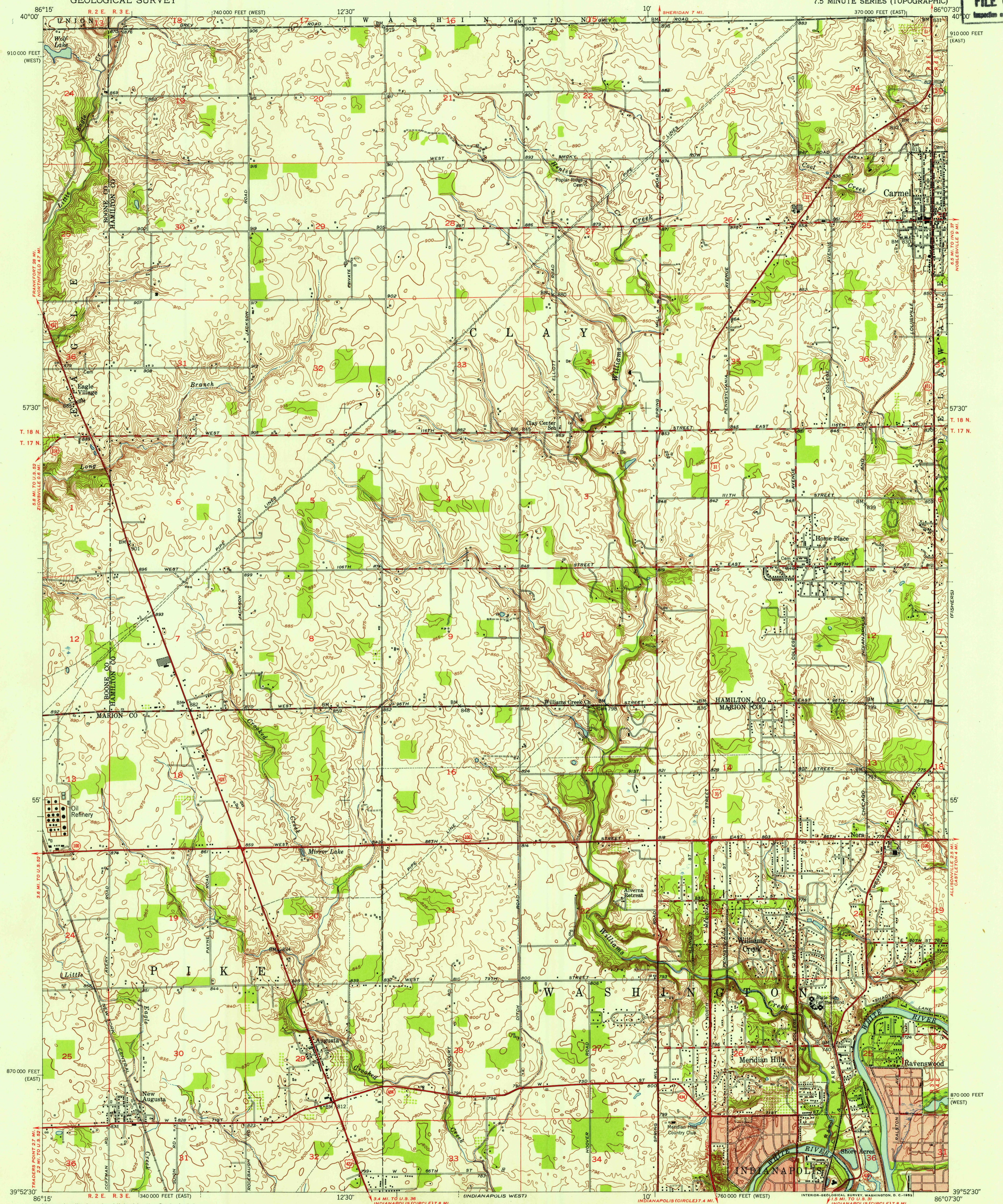


FILE COPY
Inspection and Editing



Mapped, edited, and published by the Geological Survey
Control by USGS and USC&GS
Culture and drainage in part compiled from aerial photographs taken 1951. Topography by plane-table surveys 1952
Polyconic projection. 1927 North American datum
10,000-foot grids based on Indiana coordinate system, east and west zones
Red tint indicates areas in which only landmark buildings are shown

SCALE 1:24000
CONTOUR INTERVAL 5 FEET
DATUM IS MEAN SEA LEVEL

ROAD CLASSIFICATION
Heavy-duty 4 LANE 16 LANE Light-duty
Medium-duty 4 LANE 16 LANE Unimproved dirt
U.S. Route State Route

INDIANA
QUADRANGLE LOCATION
FILE COPY
Inspection and Editing

CARMEL, IND.
N3952.5-W8607.5/7.5
1952

THIS MAP COMPLIES WITH NATIONAL MAP ACCURACY STANDARDS
FOR SALE BY U. S. GEOLOGICAL SURVEY, WASHINGTON 25, D. C.
AND INDIANA DEPARTMENT OF CONSERVATION, INDIANAPOLIS, INDIANA
A FOLDER DESCRIBING TOPOGRAPHIC MAPS AND SYMBOLS IS AVAILABLE ON REQUEST

Aug 10 1953
3855